

Hyundai 9 Series diesel forklift

300D-9




Some of the photos may include optional equipment

Your satisfaction is our priority.

Proven technology! Hyundai 9 Series diesel forklift

The Hyundai 9 Series big diesel forklift is ready for the customers. Overwhelming the worksite with its superior performance and providing optimal fuel efficiency, the Hyundai 9 Series big diesel forklift offers outstanding durability based on its application of high-quality hydraulic and functional components suitable for large and heavy load duties, as well as comfortable and pleasant driving space, and convenient after-sales management.



Excellent performance

- Eco-friendly, powerful, 204.5kW Cummins QSL9 engine
- Fully automatic ZF electronic transmission with 3 forward-reverse shifts
- Wet disc brake & Kessler drive axle with planetary final reduction gears
- 3-stage TS mast (STD)

Ensured safety at the logistics site

- Auto parking brake
- Real-time notification of rear wheel steering angle
- Operator presence sensing system (OPSS)

Comfortable and safe driving

- Deluxe cabin equipped with fully automatic air conditioning
- Hydraulic pilot valve lever
- Load weight indicator (OPT)
- Password starting system
- Side shift & Fork positioner (STD)

Convenient management

- One-touch electric motor-driven tilting cabin
- Notification of replacement of the consumable items
- Engine fault diagnosis

Power & Performance

High Efficiency, Optimal Performance

Robust, refined, and luxurious design – 300D-9!
Offering increased power and fuel economy,
this model will be your best partner in
any work environment.



Some of the photos may include optional equipment

Powerful and economical Cummins QSL9 Engine

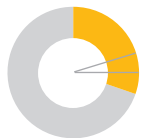
The six-cylinder QSL9 engine, equipped with the German Bosch's fuel system proven for its reliability and durability, shows lower vibration compared to other engines, delivers excellent cold-start performance, and does not emit white smoke in the winter. Moreover, its combination with the ZF transmission, optimized in fuel injection control and improved in driving efficiency, further enhances fuel efficiency and performance. In particular, you can experience increased power during operations due to its high torque at low and medium speeds, and DOC and SCR emission aftertreatment systems have been applied to satisfy Tier 4 final(Euro stage IV) (requires urea solution).



•204.5kW/2,200rpm •124kgf.m/1,500rpm

Gradeability and travel speed

With the best engine power, it delivers outstanding running performance and exceptional gradeability, ensuring stable operation at high speeds, on rough terrains and slopes.



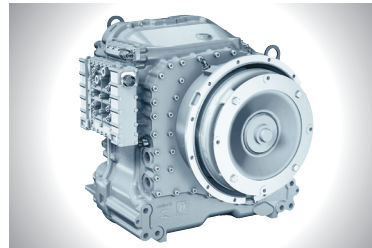
30.4% (17.0°)

Max. Gradeability (Loaded)



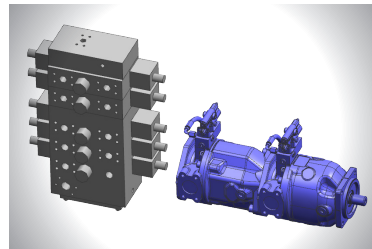
30.8km/h

Max. Travel Speed (Unloaded)



ZF Full-automatic transmission

Due to optimized engine and performance of the transmission, acceleration performance in low-speed sections has improved and noise heat generation has reduced. Also, it is possible to check the transmission status/failure etc. on the display window of the cluster.

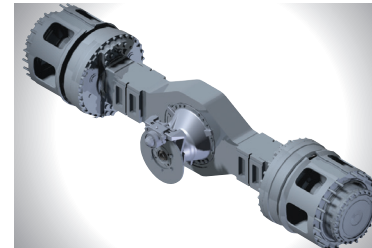


Load sensing hydraulic system

Hydraulic system consisting of a Bosch's swash plate piston pump and control valve optimizes energy consumption and increases durability of engine and transmission.

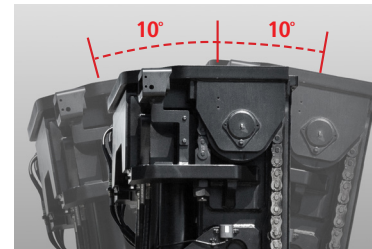
Engine mode control

Engine performance can be adjusted to suit the workload, simply by operating a switch mounted on the side panel.
 STD mode : Light load operations (fuel saving mode)
 PWR mode : Operations on slope Requiring intense power



Drive axle & Wet disc brake

Kessler's high capacity drive axle, the planetary gear type, enables outstanding power transmission and shows exceptional adaptability to sudden changes in torque. Also, wet-type multi-plate service brake delivers consistent braking power when operations are repeated.

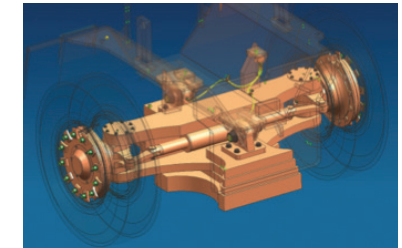


Mast Tilting Angle

Tilting speed is improved by combining some hydraulic pressure generated from the secondary pump to the primary pump flow rate. The tilting angle of 10 degrees forward and 10 degrees backward increases work efficiency.

Low engine RPM conversion

Depending on the need, the driver can convert the engine to a low RPM. The RPM will return to its initial settings value once engine is stopped and restarted.



Hydraulic steering axle

The hydraulic steering system allows light and easy operation control without overruns or kickbacks caused by the road profile. Taper roller bearings and ADI knuckles with excellent strength and wear resistance are used in consideration of heavy load operation. The newly added protector prevents damage of rear wheel hub bolts.



3-stage T/S mast

The 4.7m T/S(Triplex Separated Full Free) mast is adopted as a standard to enable better handling of large and heavy work and wider visibility. Also, it adopts BL2066 chain and chain sheave bearings with 70% improved dynamic load capacity compared to the 250D-9.

Easy & Comfort

Comfortable Workspace Intuitive Monitoring

Ergonomically designed workspace for operator provides the best comfort in any type of operation.

COMFORTABLE WORKSPACE

ADVANCED MONITORING
SYSTEM

HYUNDAI

HYUNDAI

Some of the photos may include optional equipment

Ergonomic operating space

The ergonomically designed operating space was made for more space, a wider field of view and operator comfort. The smooth lever and pedal operation, adjustable tilting handle, suspension seat and deluxe cabin provide comfortable and efficient operation.

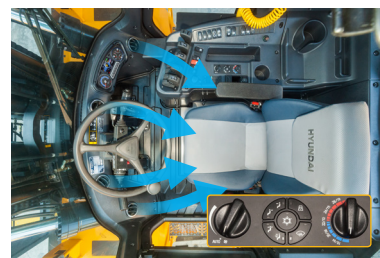


Some of the photos may include optional equipment



Full air suspension seat (OPT)

Ergonomically designed to support a comfortable posture, the full suspension seat relieves fatigue and enables greater comfort for operation.



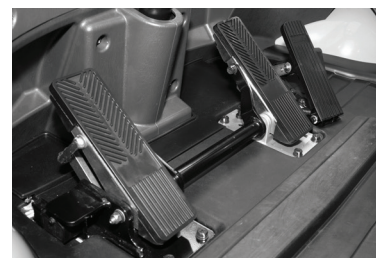
Fully automatic air-conditioner

The air-conditioner automatically adjusts temperature to the set temperature and provides more comfortable working environment for the operator.



Responsive levers

Responsive levers with the latest hydraulic system enables micromanipulation and excellent performance. (5-Lever, 6-Function : STD / 7-Function : OPT)



Ergonomic pedals

The high-quality floor mat and ergonomically designed pedal arrangement reduce operator fatigue and drastically improve productivity.

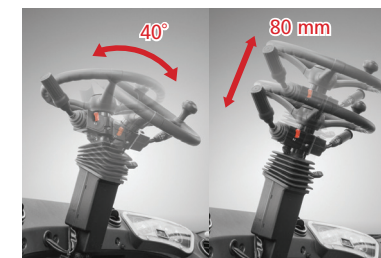
New style & centralized cluster

The TFT LCD color monitor indicates real-time driving information and changing vehicle stability depending on the work condition, thus allowing easy and efficient control for the operator. Diagnostic error codes allow easy trouble-shooting and the operator can select various performance modes.



Main Functions

- Urea level gauge
- T/M information display
- Parking brake indicator
- Battery charging failure warning
- Brake system overheat warning
- Air cleaner filter warning
- Machine inclination warning
- Load weight indicator
- Steering wheel position
- Engine coolant temperature warning
- Engine check warning lamp
- Seatbelt warning
- Exchange consumable indicator
- Mast tilt angle indicator
- High beam indicator
- T/M error warning
- OPSS indicator
- Inching indicator



Adjustable steering wheel

The steering wheel can be pushed forward or backward, pushed in or out to suit the driver's body shape, providing an all the more comfortable work environment.



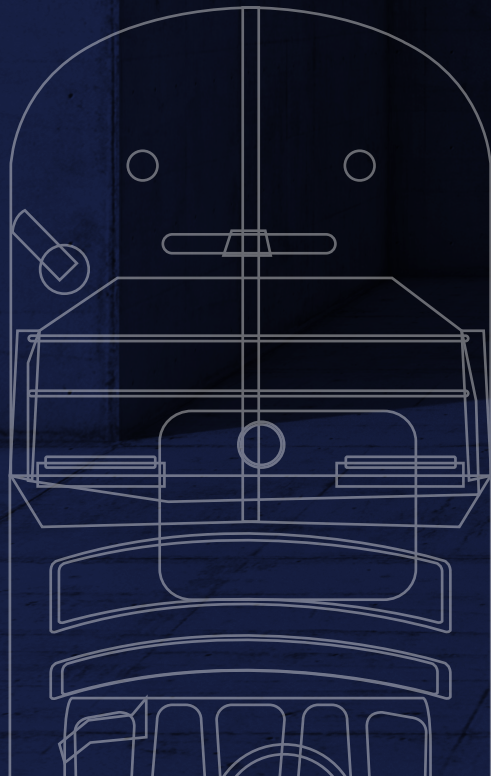
Integrated communications controller

Cutting-edge communications technology enhances the operator convenience (Bluetooth hands-free, cellphone call, radio communication, USB/MP3 audio control functions).

Secure & Safety

Excellent visibility Advanced safety

The safely designed driver's space makes
your operating more comfortable.



EXCELLENT VISIBILITY

ADVANCED SAFETY

Some of the photos may include optional equipment

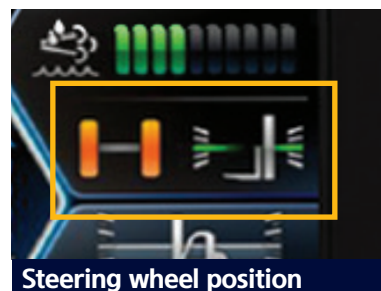
Excellent visibility for safe operation

Optimized lift cylinder arrangement provides the operator with wider visibility. A panoramic mirror expands the driver's rear view.



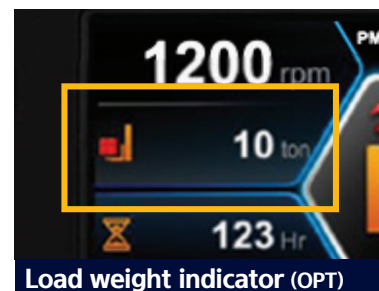
Machine inclination warning system

The grade (left) and slope (right) sensors are built into the MCU and provide the grade and slope status information of the vehicle connected with the road surface condition in real time. Also, an alarm is emitted when the KS regulation is exceeded.



Steering wheel position

As a measurement of the steering angle sensor, which is installed on the kingpin of the rear axle, is displayed on the large cluster screen as an image, the operator can predict the direction of the vehicle without difficulty.

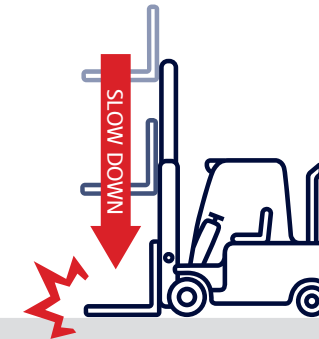


Load weight indicator (OPT)

When lifting a load, a change in hydraulic pressure of the lift line is converted to a measurement of weight displayed in real time, and a warning is given at the time of overload.

Safety features

The adoption of a high-sensitivity sensor and advanced safety system eliminates the risk of safety accidents.



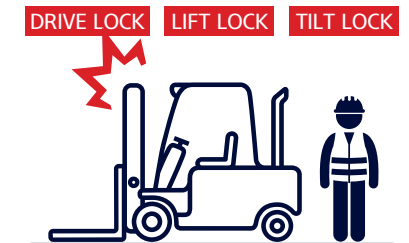
Fork Safety Features

The down-safety valve prevents forks from dropping down in case of sudden damage of hydraulic line.



Auto parking brake

If the operator leaves the seat while the gear lever is in neutral, the parking brake is automatically engaged to secure safety, and released upon the operator's return to the seat.



Operator presence sensing system

All mast and drive movements stop functioning when the operator is not in the seat.

Speed limit setting

The operator can set and limit the maximum speed from 10km/h to 30km/h.

Password starting system

The operator can set a passcode to prevent vehicle theft and possible safety accidents in case the vehicle is used by an unauthorized person. (Up to 10 passwords can be set.)



Increased night work efficiency

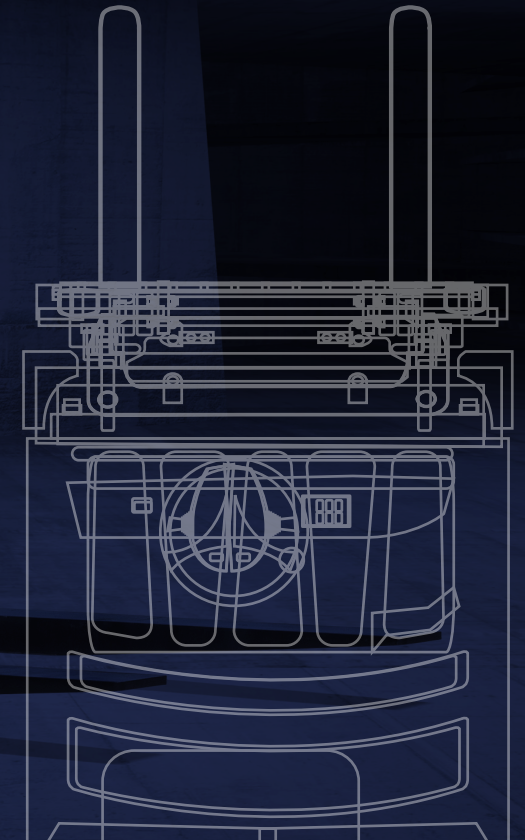
Four work lamps on the upper side of the mast, two headlamps on the frame fender, and two work lamps on the upper side of the counterweight enable efficient nighttime and indoor operations.



Maintenance & Convenience

Fast and Easy Maintenance & Convenience Features

An ideal arrangement of components ensures easy access and convenience for maintenance.

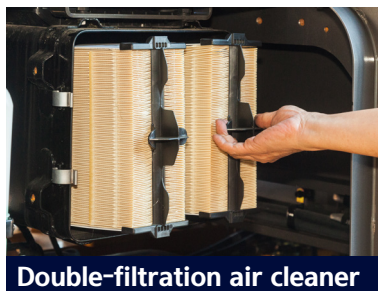


Fully opening tilting cabin and hood

The tilting cabin that has been dramatically improved in its maintainability functions with a separate electric motor and hydraulic pump. By opening the cabin, which can be tilted to a maximum of 54 degrees, and the engine hood, which can be opened to the left or right, all functional components installed inside the chassis can easily be examined and serviced.



Some of the photos may include optional equipment



Double-filtration air cleaner

The double-filtration air cleaner filter with large capacity enables longer filter life span. The operator can access the air filter easily by simply opening the engine hood.



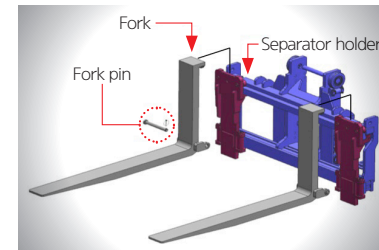
Cabin air cleaner filter

The air cleaner filter blocks external dust and noise from the cabin, and continuously supplies clean air indoor to maintain fresh air in the driving space.



Automatic tilting system

The cabin tilting system allows the operator to tilt the cabin with a single switch up to 54 degrees, thus enabling easy maintenance of functional devices located under the driver seat.



Separator holder carriage

To improve handling and easily switch forks and other attachment, separator holder system is adopted as option. It is possible to install various attachments easily.



Up-to-date cooling system

Variable speed and remote controlled fans reduce required engine power and noise, while the aluminum cooler improves durability and heat output.



Rear view camera

A rear view camera and monitor are linked to the reverse gear, ensuring safer rear work environment.



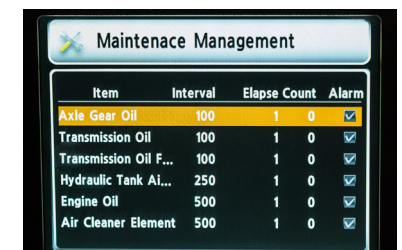
Battery master switch

Damage is prevented during inspection /maintenance of electronic units, and battery discharge.



Engine fault diagnosis

Details of engine fault diagnosed by the engine control unit (ECU) can be checked on the cluster.



Maintenance management

Replacement cycle of consumable items can be checked on the monitor, thus preventing performance deterioration of major functional parts due to failure to notice deterioration.

Mast specifications

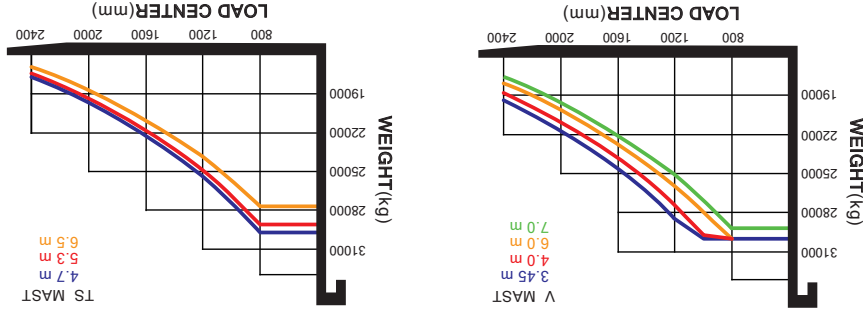
Mast type	mm		deg	kg															
	Maximum fork height	Overall mast height (lowered)																	
2-stage standard mast	V445	3,486	3,593	30,000	38,236	12 / 10	30,000	38,815	39,092	39,384	30,000	30,000	30,000	39,664	40,248	40,560	40,850		
	V450	4,540	4,120	12 / 10	30,000	39,092	12 / 10	30,000	39,384	39,664	30,000	30,000	30,000	39,664	40,248	40,560	40,850		
	V450	5,540	4,620	12 / 10	30,000	39,664	12 / 10	30,000	39,664	39,664	30,000	30,000	30,000	39,664	40,248	40,560	40,850		
	V600	6,040	4,870	12 / 10	30,000	40,248	12 / 10	30,000	40,248	40,248	30,000	30,000	30,000	40,248	40,560	40,850	40,850	40,850	
	V650	6,540	5,120	12 / 10	29,800	40,560	12 / 10	29,800	40,560	40,560	30,000	30,000	30,000	40,560	40,850	40,850	40,850	40,850	
	V700	7,040	5,370	12 / 10	29,200	40,850	12 / 10	29,200	40,850	40,850	30,000	30,000	30,000	40,850	40,850	40,850	40,850	40,850	
	3-stage standard mast	※TS470	4,712	3,400	10 / 10	41,320	41,320	10 / 10	41,320	41,320	41,320	41,320	41,320	41,320	41,320	41,320	41,320	41,320	41,320
		TS500	5,012	3,500	10 / 10	29,400	41,567	10 / 10	29,400	41,567	41,567	41,567	41,567	41,567	41,567	41,567	41,567	41,567	41,567
		TS530	5,312	3,600	10 / 10	29,000	41,774	10 / 10	29,000	41,774	41,774	41,774	41,774	41,774	41,774	41,774	41,774	41,774	41,774
		TS560	5,612	3,700	10 / 10	28,700	41,945	10 / 10	28,700	41,945	41,945	41,945	41,945	41,945	41,945	41,945	41,945	41,945	41,945
		TS600	6,016	3,835	10 / 10	28,300	42,177	10 / 10	28,300	42,177	42,177	42,177	42,177	42,177	42,177	42,177	42,177	42,177	42,177
		TS650	6,512	4,000	10 / 10	27,700	42,471	10 / 10	27,700	42,471	42,471	42,471	42,471	42,471	42,471	42,471	42,471	42,471	42,471

※ : Standard

Specification

Identification		Basic		Engine	
Load capacity	30,000 kg	Load center	800 mm	Displacement	CC
Maximum lift height ①	4,712 mm	Lift speed, loaded / unloaded	250 / 280 mm/sec	Max. torque	kgf · m/rpm
Lowering speed, loaded / unloaded	400 / 300 mm/sec	Max. lift height, loaded / unloaded	2,450 / 2,200 mm	Engine power acc. to ISO 1585	kW/rpm
Fork dimension L x W x H	2,450 x 250 x 110 mm	Travel speed, unloaded	30.8 km/h	Manufacturer / Model	-
Fork Carriage Width ⑭	2,950 mm	Max. Gradeability, loaded	30.4 (17.0) %	Tread, front / rear	mm
Tilting Angle (forward ② / backward ③)	10 / 10 degree	Turning Radius ⑥	5,864 mm	Tread, front ⑩ / rear ⑬	mm
Extended height ④ / Lowered height ⑤	6,500 / 3,400 mm	Max. Drawbar pull, loaded	225,872 N	Ground clearance ⑩ / Wheel base ⑪	mm
Travel speed, unloaded	30.8 km/h	Service weight	41,320 kg	Height of overhead guard (cabin) ⑨	mm
Max. Gradeability, loaded	30.4 (17.0) %	Length to face of forks ⑦ / Overall width ⑧	6,521 / 3,070 mm	Service weight	kg
Turning Radius ⑥	5,864 mm	Max. Drawbar pull, loaded	225,872 N	Max. torque	kgf · m/rpm
Max. Drawbar pull, loaded	225,872 N	Max. Gradeability, loaded	30.4 (17.0) %	Engine power acc. to ISO 1585	kW/rpm
Travel speed, unloaded	30.8 km/h	Turning Radius ⑥	5,864 mm	Manufacturer / Model	-
Extended height ④ / Lowered height ⑤	6,500 / 3,400 mm	Max. lift height, loaded / unloaded	2,450 / 2,200 mm	Tread, front / rear	mm
Travel speed, loaded / unloaded	400 / 300 mm/sec	Lowering speed, loaded / unloaded	250 / 280 mm/sec	Tread, front ⑩ / rear ⑬	mm
Fork dimension L x W x H	2,450 x 250 x 110 mm	Fork Carriage Width ⑭	2,950 mm	Ground clearance ⑩ / Wheel base ⑪	mm
Fork Carriage Width ⑭	2,950 mm	Tilting Angle (forward ② / backward ③)	10 / 10 degree	Height of overhead guard (cabin) ⑨	mm
Tilting Angle (forward ② / backward ③)	10 / 10 degree	Extended height ④ / Lowered height ⑤	6,500 / 3,400 mm	Service weight	kg
Extended height ④ / Lowered height ⑤	6,500 / 3,400 mm	Travel speed, unloaded	30.8 km/h	Max. Drawbar pull, loaded	225,872 N
Travel speed, unloaded	30.8 km/h	Max. Gradeability, loaded	30.4 (17.0) %	Turning Radius ⑥	5,864 mm
Max. Gradeability, loaded	30.4 (17.0) %	Turning Radius ⑥	5,864 mm	Max. Drawbar pull, loaded	225,872 N
Turning Radius ⑥	5,864 mm	Service weight	41,320 kg	Service weight	41,320 kg
Max. Drawbar pull, loaded	225,872 N	Length to face of forks ⑦ / Overall width ⑧	6,521 / 3,070 mm	Length to face of forks ⑦ / Overall width ⑧	6,521 / 3,070 mm
Service weight	41,320 kg	Height of overhead guard (cabin) ⑨	3,278 mm	Height of overhead guard (cabin) ⑨	3,278 mm
Length to face of forks ⑦ / Overall width ⑧	6,521 / 3,070 mm	Ground clearance ⑩ / Wheel base ⑪	290 / 4,250 mm	Ground clearance ⑩ / Wheel base ⑪	290 / 4,250 mm
Height of overhead guard (cabin) ⑨	3,278 mm	Tread, front ⑩ / rear ⑬	2,212 / 2,140 mm	Tread, front ⑩ / rear ⑬	2,212 / 2,140 mm
Ground clearance ⑩ / Wheel base ⑪	290 / 4,250 mm	Manufacturer / Model	-	Manufacturer / Model	Cummins / QSL9
Tread, front ⑩ / rear ⑬	2,212 / 2,140 mm	Engine power acc. to ISO 1585	204.5 / 2,200 kW/rpm	Engine power acc. to ISO 1585	204.5 / 2,200 kW/rpm
Manufacturer / Model	-	Max. torque	124 / 1,500 kgf · m/rpm	Max. torque	124 / 1,500 kgf · m/rpm
Engine power acc. to ISO 1585	204.5 / 2,200 kW/rpm	Displacement	8,849 cc	Displacement	8,849 cc

Load Capacity

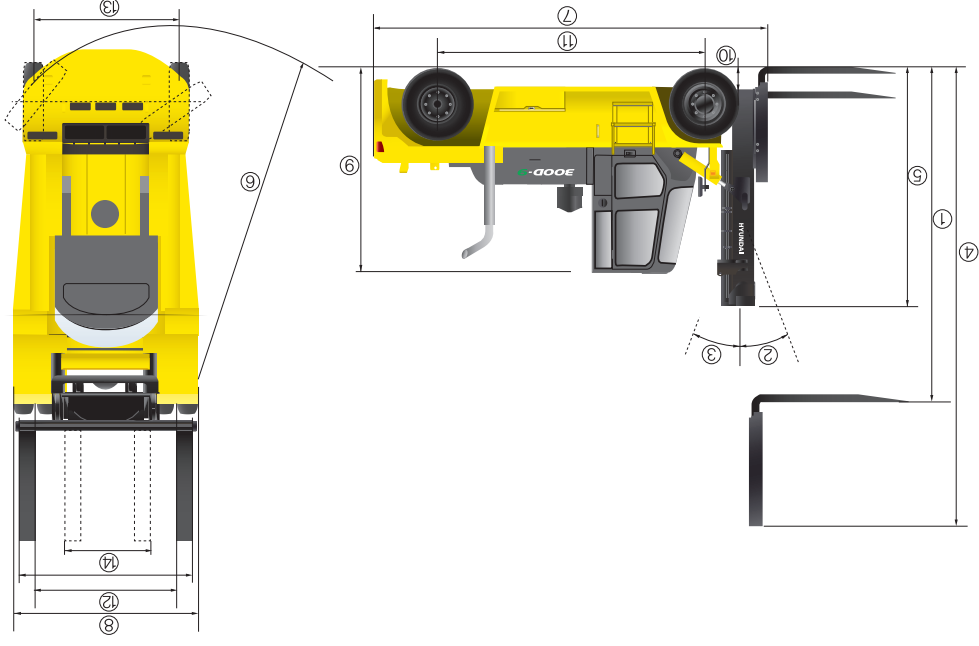


* The above specifications are based on side shift and fork positioner.

Optional Items

- Fork(m) 110 x 250 x 2,450(STD) / 110 x 250 x 1,800 / 110 x 250 x 2,700 / 110 x 250 x 3,150 / 110 x 250 x 3,650
- Seat : Leather + Seat heater
- Sliding carriage

Dimension



* Some of the data may change depending on optional equipment.