



Innovative solution in the field of UV radiation detection

Features

- Precise location of discharge sources
- Recording and playback of videos and images
- High UV sensitivity
- Automatic sharpness for UV and visible image
- Automatic noise reduction
- 5.7" touch LCD
- No sensitivity to sunlight during operation in full daylight
- Additional LED alarm in the event of UV radiation detection
- Built-in GPS
- Software for data transmission and generating reports

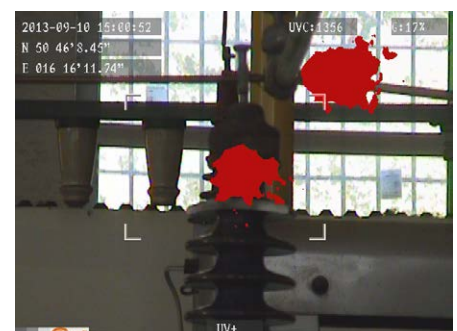
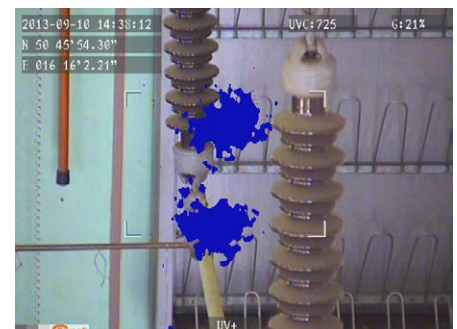
Application

The design, placing emphasis on high functionality, allows for detection and monitoring of corona, arc and surface discharges in power engineering. This is a way to continuously analyze the technical condition of equipment - e.g. an HV power line - and locate problems before damage or serious failure occurs.

Capabilities

The UV-260 is a high-class, professional, and simultaneously lightweight and intuitive device enabling quick and simple remote diagnostics of a system **without interfering in its operation**. Thanks to the latest generation of imaging system and highly sensitive UV detector, the product enables observation and recording of events in both **UV** and **visible light**. In addition, the image can be saved in the form of photos or video clips.

In the case of complex and extensive energy systems examination, i.e. power lines, a big problem is to pinpoint a potential failure area in an accurate way. That is why Sonel has opted for a comprehensive solution. UV-260 has a **built-in GPS receiver** that registers the location of the taken photo or video.



Technical specification

Standard accessories

UV - optical properties

Image type	Monochrome
Minimum UV sensitivity	$2.2 \times 10^{-18} \text{ W/cm}^2$
Minimum discharge detection	1 pC from the distance of 10 meters
Spectral range	UV 240...280 nm
Field of view H x V	5.5° x 4.0°
Focus	Full auto and manual (UV and visible channels)
Focus distance	2 m...∞
Detector life span	No degradation
Frequency	50 Hz



Z-23 power supply
WAZASZ23



2x Li-Ion rechargeable battery
7.2 V 2.2 Ah
WAAKU22



external battery charger
WAADALB220



SD memory card

Visible - optical properties

Image type	Full color
UV/visible overlay accuracy	Better than 1 miliradian
Minimum visible light sensitivity	0.1 lx
Zoom factor	25x optical and 12x digital

Display

Type	5.7" VGA color LCD touchscreen, folding
Video standard	PAL / NTSC
Modes	Combined (UV & visible) / UV only / visible only
Corona shades	White, red, blue

Processing & communications

Video standard	H.264
Alarms	Audio, LED
Menu	Buttons and LCD touchscreen
Audio	Microphone input for audio notes
GPS	✓



RCA/RCA video cable
WAPRZVIDRCA

Data storage

Storage media	SD card
Image format	JPG
Video storage	AVI
Storage capacity	8000 images or >4 hours of videos (for 2 GB memory card)
Data download	USB, card reader



battery charging cable for 12 V car sockets
WAPRZLAD12SAM1

Power system

Power consumption	10 W
Battery type	Li-Ion (2 pcs. included)
Battery run time	2 hours
Charge	External or internal charger
External supply	9-12 V, 10 VA
Power adapter	110...240 V AC, 50/60 Hz / 12 V DC 3.8 A



camera strap
WAPOZSZEUV260

Other parameters

Operating temperature	-10...+55°C 14°F...131°F
Storage temperature	-25...+60°C -13°F...140°F
Humidity	95% without condensation
Size	238 x 165 x 91 mm 9.4" x 6.5" x 3.6"
Weight	2.5 kg 5.5 lbs
Power interface	✓
SD card slot	✓
Video output	CVBS
Audio input / output	Microphone / headphones



hard briefcase
WAWALXL11

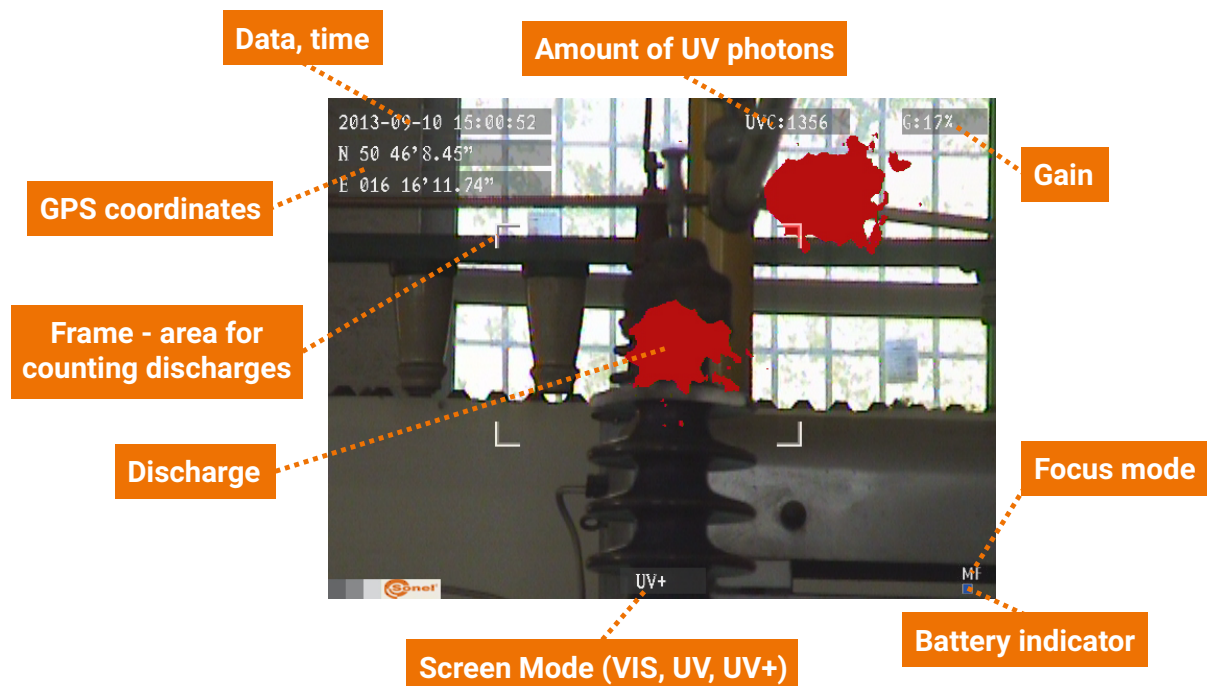


Moreover:

- headphone set with microphone - WAPOZSLU2
- PC software
- user manual



Examples of UV discharges. User can opt to show in red, white, or blue rendering against target image



Screen display showing UV discharge information and camera settings