



'MEGA' MILD STEEL FLANGES & BLANK FLANGES

Products Are Manufactured in an ISO 9001 Certified Company



JIS D125 10K 304

ABOUT US

ENGTEX SDN. BERHAD (Engtex) began as a hardware retail shop in Kuala Lumpur in 1983 and has since grown to be a leading 'one-stop' distribution centre and integrated manufacturers in supplies for pipeline systems, infrastructure, and construction in Malaysia. Engtex offers a wide range of products including pipes, valves, fittings, hardware, iron and steel products, and building/construction materials, providing a reliable and cost-effective supply chain solutions to our customers.

Our products are widely used by customers in plumbing, sewerage, and waterworks; mechanical and electrical engineering works such as fire-fighting system, HVAC/air-conditioning system; infrastructure projects; civil construction; electromechanical; disaster mitigation; industrial, commercial and general purpose.

Engtex's parent company, Engtex Group Berhad has been listed on the Main Market of Bursa Malaysia since 2 August 2002. Today, Engtex Group Berhad has become a Malaysian-grown conglomerate with consistent annual turnover of RM1.5 billion per annum. We, at Engtex, is committed to investing in product development and supply chain management, enhancing quality and after-sales services to ensure complete customer satisfaction.

INDEX

01

Company Profile

02

General Information

03

BS EN 1092-1:2018 (PN 16)
MILD STEEL FLANGE

04

BS 10:2009 (TABLE E)
MILD STEEL FLANGE

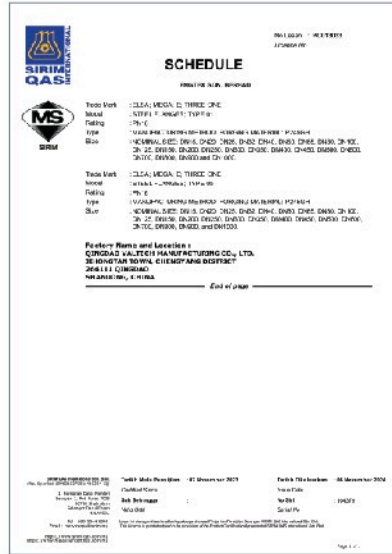
05

5K JIS B2220-2004
MILD STEEL FLANGE

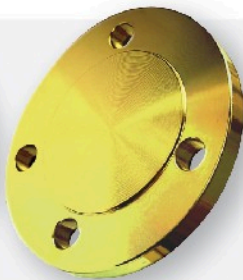
06

10K JIS B2220-2004
MILD STEEL FLANGE

BRITISH STANDARD FLANGE



Type 01
(Slip-On Flange)



Type 05
(Blind Flange)

- Standard** : BS EN 1092 - 1 : 2018
- Pressure Rating** : PN16
- Size** : DN15 - DN2000
- Type** : TYPE 01, 05
- Coating** : Rust-Proof Oil; Yellow Paint



- Standard** : BS 10 : 2009
- Table** : Table E
- Size** : DN15 - DN600
- Type** : Slip-On Flange & Blind Flange
- Coating** : Rust-Proof Oil; Yellow Paint



Slip-On Flange

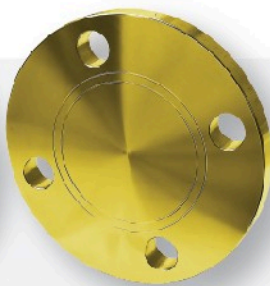


Blind Flange

JAPANESE INDUSTRIAL STANDARD FLANGE



Slip-On Flange

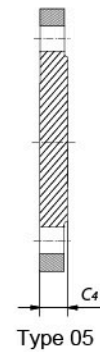
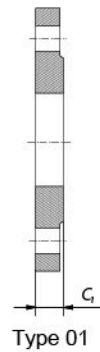
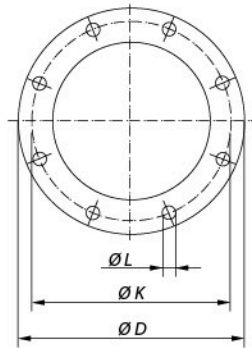


Blind Flange

- Standard** : JIS B2220
- Table** : 5K, 10K
- Size** : DN15 - DN750
- Type** : Slip-On Flange & Blind Flange
- Coating** : Rust-Proof Oil; Yellow Paint

Please note: Technical data provided is indicative only and may be subject to change without notice

MEGA BS EN 1092-1:2018 (PN 16) MILD STEEL FLANGE



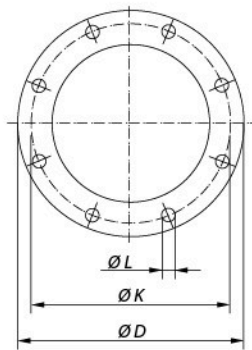
Unit:mm

DN	Outside Diameter	Diameter of Bolt Circle	Diameter of Bolt Hole	Bolt Number	Flange Thickness	
	D	K	L		C1	C4
	Flange Type					
	01, 05				01	05
15	95	65	14	4	14	16
20	105	75	14	4	16	18
25	115	85	14	4	16	18
32	140	100	18	4	18	18
40	150	110	18	4	18	18
50	165	125	18	4	20	18
65	185	145	18	8	20	18
80	200	160	18	8	20	20
100	220	180	18	8	22	20
125	250	210	18	8	22	22
150	285	240	22	8	24	22
200	340	295	22	12	26	24
250	405	355	26	12	29	26
300	460	410	26	12	32	28
350	520	470	26	16	35	30
400	580	525	30	16	38	32
450	640	585	30	20	42	40
500	715	650	33	20	46	44
600	840	770	36	20	55	54
700	910	840	36	24	63	58
800	1025	950	39	24	74	62
900	1125	1050	39	28	82	64
1000	1255	1170	42	28	90	68

Other Flange Sizes are also available on request.

Please note: Technical data provided is indicative only and may be subject to change without notice

MEGA BS 10:2009 (TABLE E) MILD STEEL FLANGE



Slip-On Flange



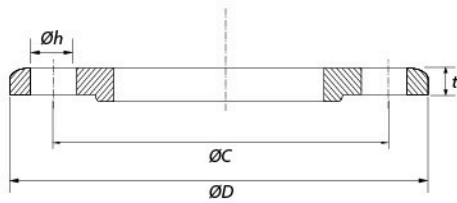
Blind Flange

Unit:mm

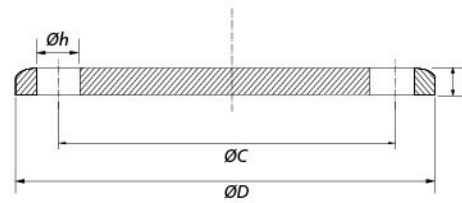
Nominal Size mm	Outside Diameter	Diameter of Bolt Circle	Diameter of Bolt Hole	Bolt Number
	D	K	L	
15	95.3	66.7	12.7	4.0
20	101.6	73.0	12.7	4.0
25	114.3	82.6	12.7	4.0
32	120.7	87.3	12.7	4.0
40	133.4	98.4	12.7	4.0
50	152.4	114.3	15.9	4.0
65	165.1	127.0	15.9	4.0
80	184.2	146.1	15.9	4.0
100	215.9	184.2	15.9	8.0
125	254.0	209.6	15.9	8.0
150	279.4	235.0	19.1	8.0
200	336.6	292.1	19.1	8.0
250	406.4	355.6	19.1	12.0
300	457.2	406.4	22.2	12.0
350	527.1	469.9	22.2	12.0
400	577.9	520.7	22.2	12.0
450	641.4	584.2	22.2	16.0
500	704.9	641.4	22.2	16.0
600	825.5	755.7	28.6	16.0

Please note: Technical data provided is indicative only and may be subject to change without notice

MEGA 5K JIS B2220-2004 MILD STEEL FLANGE



Slip-On Flange



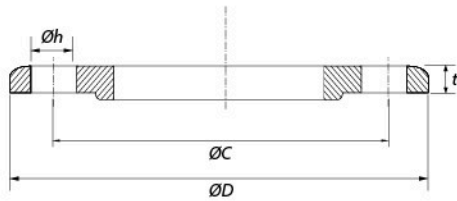
Blind Flange

Unit:mm

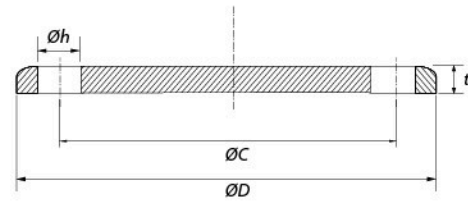
Nominal Bore of Flange	Outside Diameter of Flange	Sectional Dimensions of Flange	Diameter of Bolt		
			Bolt Circle	Bolt Holes	Hole Diameter
			D	t	C
15	80	9	60	4	12
20	85	10	65	4	12
25	95	10	75	4	12
32	115	12	90	4	15
40	120	12	95	4	15
50	130	14	105	4	15
65	155	14	130	4	15
80	180	14	145	4	19
90	190	14	155	4	19
100	200	16	165	8	19
125	235	16	200	8	19
150	265	18	230	8	19
200	320	20	280	8	23
250	385	22	345	12	23
300	430	22	390	12	23
350	480	24	435	12	25
400	540	24	495	16	25
450	605	24	555	16	25
500	655	24	605	20	25
600	770	26	715	20	27
700	875	26	820	24	27
750	945	28	880	24	33

Please note: Technical data provided is indicative only and may be subject to change without notice

MEGA 10K JIS B2220-2004 MILD STEEL FLANGE



Slip-On Flange



Blind Flange

Unit:mm

Nominal Bore of Flange	Outside Diameter of Flange	Sectional Dimensions of Flange	Diameter of Bolt		
			Bolt Circle	Bolt Holes	Hole Diameter
			D	t	C
15	95	12	70	4	15
20	100	12	75	4	15
25	125	14	90	4	19
32	135	16	100	4	19
40	140	16	105	4	19
50	155	16	120	4	19
65	175	18	140	4	19
80	185	18	150	8	19
100	210	18	175	8	19
125	250	20	210	8	23
150	280	22	240	8	23
200	330	22	290	12	23
250	400	24	355	12	25
300	445	24	400	16	25
350	490	26	445	16	25
400	560	28	510	16	27
450	620	30	565	20	27
500	675	30	620	20	27
600	795	32	730	24	33
700	905	34	840	24	33
750	970	36	900	24	33

Please note: Technical data provided is indicative only and may be subject to change without notice

ENGTEX SDN. BHD.

(Co. No. 1983010117111 (112520-V))




Address:

Lot 36, Jalan BRP9/2B, Putra Industrial Park, Bukit Rahman Putra,
47000 Sungai Buloh, Selangor Darul Ehsan, Malaysia.

Sales Enquiry:

 6012-286 6905


 6012-399 9920

General Enquiry:

 603-6140 1111

Fax:


 603-6140 1818

 603-6140 2323

Email:

 enquiry@engtex.com.my

Website:

 www.engtex.com.my



Scan
For More Info

