



SITEMATE II MONITORING SYSTEM



INTEGRATION UPS AND ENVIRONMENT
MONITORING SYSTEM FOR DATA CENTER

CSM Distribution Sdn Bhd (1030516-T)
26, Jalan BP 5/9, Bandar Bukit Puchong,
47120 Puchong, Selangor Darul Ehsan.
www.csmd.my

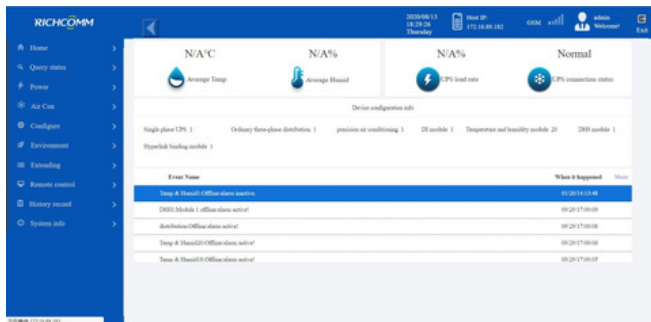
SITEMATE II

DEVICE

- SITEMATE II monitoring host, with UPS monitoring and environment monitoring, is specially designed and developed for data center. It adopts popular 19 inches rack-mounted design style with 220V-240V communication power supply, which is more suitable for the design demands of modern machine room. What is more, it supports 16 channels switch quantity detection, 8 channels analog quantity input and 6 channels delay output control, which can satisfy the monitoring demand of small and medium-sized machine room, it is the best SITEMATE II choice for building a modern unattended Data Center.

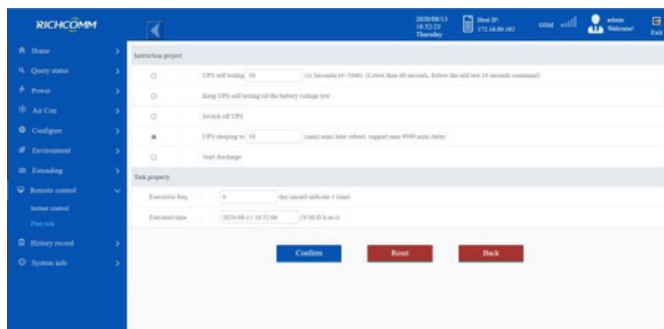
INTERFACE

• SUMMARY



- 16 digital input terminals (0~5V TTL level); support to add-on dry contact type environment sensor;
- 8 analog input terminals (0~5V linear level); support to detect analog quantity such as current, voltage, frequency, etc;
- 5 digital output terminals (12VDC/1A), can realize the sound-light alarm and other equipment linkage;
- Support 20 temperature & humidity sensors;
- Built-in TCP/IP network function module, support many kinds of network protocol such as like SNMP V1, V2, V3, HTTP, HTTPS, DNS, SMTP, DHCP, SNIP, SSH, SSL;
- Support IPV6/IPV4;
- Network mode: the LAN which is based on IP, WAN, Internet, ADSL, E1, wireless Ethernet, etc;
- Safe and reliable user permission management;
- Built-in optimal IP Power communication protocol, guarantee the real-time data acquisition and make full use of bandwidth;
- Support multiple configuration management mode such as Telnet, Hyper Terminal, Web browser, etc;
- Support task schedule, can set UPS timing open/shutdown, battery timing discharge, etc;
- Compatible with multi-brand and multi-type of UPS;
- Support history data and history event record;
- Built-in system clock, and support auto reset to achieve time synchronization;
- Support Email alarm;
- Optional GSM module, support SMS query and alarm.

• TASK SCHEDULE



• HISTORY RECORDS

Date	Input voltage	Output voltage	Current load	Input frequency	UPS response	Battery capacity	Total battery voltage
2023-09-08 17:50:17	220 V	220 V	34 %	50.002	30 °C	99 %	2.2 V
2023-09-08 18:00:17	220 V	220 V	34 %	50.002	30 °C	99 %	2.2 V
2023-09-08 17:50:17	220 V	220 V	34 %	50.002	30 °C	99 %	2.2 V
2023-09-08 17:55:17	220 V	220 V	34 %	50.002	30 °C	99 %	2.2 V
2023-09-08 17:50:17	220 V	220 V	34 %	50.002	30 °C	99 %	2.2 V
2023-09-08 17:55:17	220 V	220 V	34 %	50.002	30 °C	99 %	2.2 V
2023-09-08 17:50:17	220 V	220 V	34 %	50.002	30 °C	99 %	2.2 V
2023-09-08 17:55:17	220 V	220 V	34 %	50.002	30 °C	99 %	2.2 V
2023-09-08 17:50:17	220 V	220 V	34 %	50.002	30 °C	99 %	2.2 V
2023-09-08 17:55:17	220 V	220 V	34 %	50.002	30 °C	99 %	2.2 V

SITEMATE II

PORTS

- SITEMATE II with ports to be connected to different devices and sensors.



APPLICATION TOPOLOGY

- SITEMATE II can be connected to UPS and different add on sensors as showed in the diagram.



TECHNICAL SPECIFICATION

CPU	32-Bit ARM926EJ-S Core 300 MHz High Speed Processor (CPU)		
RAM	16M byte SDRAM	FLASH ROM	4M Byte Flash
Serial Port	2 High-Speed asynchronous RS232 Serial Port, 1 RS232 asynchronous serial port for communicating with UPS; another RS232 serial port for parameter configuration; 1 RS422/485 for expanding temperature and humidity monitoring and other intelligent devices.		
Network Port	10/100Mbps High-Speed Ethernet Network Self-Adaptive		
Output Control	16 Digital input terminals (0~5V TTL Level);		
	8 Analog input terminals (0~5V linear level);		
	5 Digital output terminals (12VDC/1A)		
	Support 20 temperature and humidity sensor, series connection by RS485/RS422.		
Browser Support	Able to access vi.a Internet Explore, Netscape, Chrome, Firefox, or other compatible browsers.		
SNMP MIB	SNMP V1.1/V2.0/V3.0		
Network Protocol	TCP/IP, UDP, SNMP, Telnet, SNTP, HTTP, SMTP, DHCP, DNS, TFTP, ARP, ICMP, PPP, etc.		
LED Indicator	PW, M-PW, RUN, DEV, PP, IPP, WEBS, SNMP, EXT, MODEM, LAN 10/1 00M Link/Active.		
Input Power	220V/50Hz		
Power Consumption	≤12W		
Operating Environment	Temperature: 0°C~70% / Humidity: 10~85%		
Program Update	Network Upgrade, Tool Update.		
Other Configuration	Built-in system clock supports auto reset to achieve time synchronization.		
Multi-language	Support simplified Chinese, English and also expand other languages.		
System Security	Provided based on IP filtering mechanism and system operation, control and management of the user ID and password protection.		
Safety Certificate	CE, FCC		