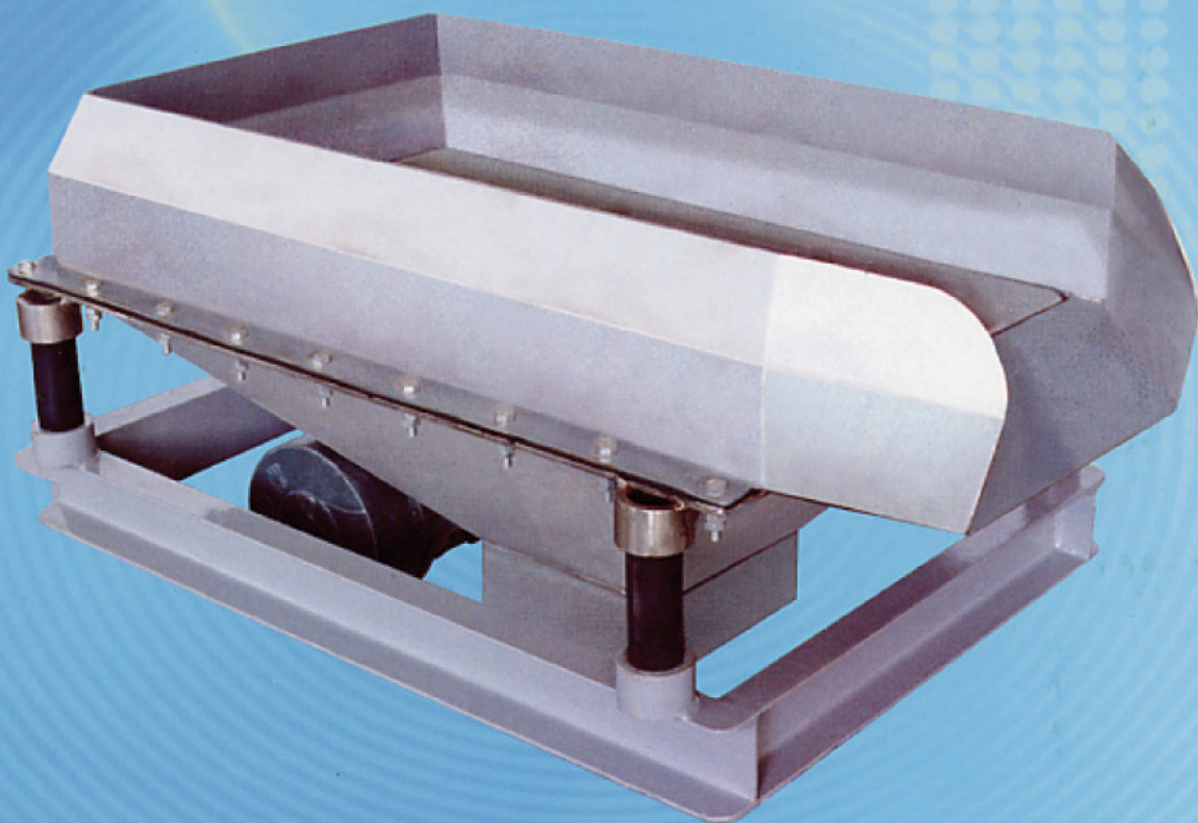


方形震動篩

使用說明書

Instruction of Separator & Filter



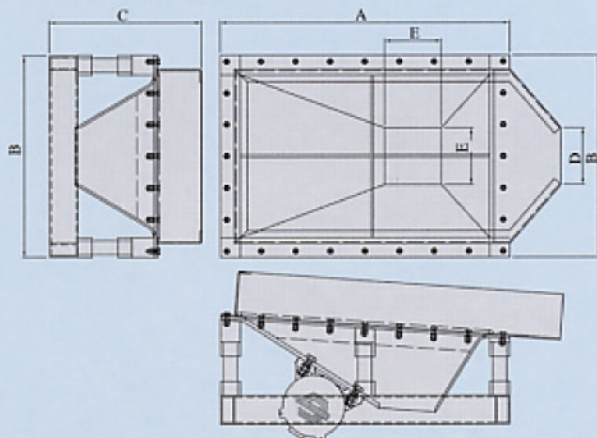
通過ISO9001: 2000國際質量體系認證

方形震動篩

Separator & Filter

一、適用行業：本產品適用於食品、制藥、化工、陶瓷、粉末冶金、塑料、橡膠、研磨、污水處理.....等行業。
Applications: This machine can be used in making foodstuffs, medicine, chemicals, ceramic tiles, powdered metals, plastics and rubber as well as in abrasives and pollution treatment

二、外形尺寸 Exterior Dimensions:



機種 Model	尺寸 Dimensions				
	A	B	C	D	E
GY-400E	700	450	386	160	160
GY-600E	1020	713	536	200	200
GY-800E	1500	940	641	200	200
GY-1200E	2000	1080	902	220	220

三、參數 Reference Figures:

機種 Model	電機馬力 Power (HP)	轉速 Speed (RPM)	頻率 Frequency (Hz)	激震力 Centrifugal force (Kg)	篩面有效面積 Effective screen area (mm)	淨重 Net wt. (Kg)	處理量 Capacity (tons/hr)
GY-400E	0.2	1470	50/60	250	340 x 590		0.1~0.3
GY-600E	0.5	1470	50/60	600	606 x 910	145	0.25~0.55
GY-800E	1	1470	50/60	800	800 x 1360		0.5~1
GY-1200E	2.5	1470	50/60	1600	956 x 1860	834	1.2~2.3

(處理能力以60目篩面粉為參考)

四、使用說明 Instructions for use:

- ※ 檢查您所訂購的形式和規格是否相符，所配電源與銘牌標識是否一致（電壓誤差±10%）；
- ※ 檢查緊固部份有否鬆動？電源開關（不可用開刀開關）及接地線安裝是否保證接觸良好？嚴禁電機缺相動轉；
- ※ 電機引出線在底座內側必須餘留60mm的伸縮量、保證機器震動時引線不被拉斷；
- ※ 引線上接線端子規則排列鎖緊於接線開關上并保證接觸良好；
- ※ 本機應放置在與四周最小保持500mm距離的地方，且機臺安裝平穩、可靠；
- ※ 本產品出廠時已設定上、下平衡塊順時針呈45°夾角（固定上部，旋轉下部平衡塊至45°），若使用效果不佳，可參考工作原理自行調節，調整後鎖緊平衡塊緊固螺絲。

- Please check the models and specifications in your order to ensure that they are appropriate to your needs and that the power source is proper (±10% of the power indicated on manufacturer's tag on the machine base).
- Check all connections and fittings to ensure that they are snug. Ensure the power switch is appropriate (do not use a knife switch) and that it is securely connected. Do not operate the machine without counter-rotation.
- Lines leading into the machine should have at least 60mm of flexibility to ensure that they will not break or become uncoupled due to vibration of the machine.
- Connect the lead lines to the proper switches in the electrical box and ensure that all connections are tight.
- Leave at least 500mm of space on all sides of the machine when installing.
- This machine left the factory in fully set-up condition, with the upper and lower parallel ramps set at 45°. If the machine does not operate smoothly at this setting, you can consider making appropriate adjustments and then tightening the set screws.

五、保養 Maintenance:

- ※ 不使用時要切斷電源、清洗時嚴禁用水衝洗電機、以防漏電；
- ※ 要保持篩網清潔、可根據過濾物質不同、採用相應清洗劑、同時篩面嚴禁用尖硬物體碰撞；
- ※ 本產品正常使用條件下保固期為一年，在保固期內，使用中若發生異常，請立即停機檢查并及時與本公司聯系，切勿自行拆卸。
- Turn off the power when the machine is not in use for long periods of time. Do not hose down the machine to clean it, in order to avoid the danger of electrical shock.
- Keep the screens clean. Various cleaning agents may be used depending on the type of material being sifted. Do not use a sharp object to scrape any part of the machine.
- This machine is guaranteed for one year under normal operating conditions. Should any unusual noise occur during this one-year warranty, stop the machine and contact us immediately. Do not attempt to make repairs or replacements yourself.