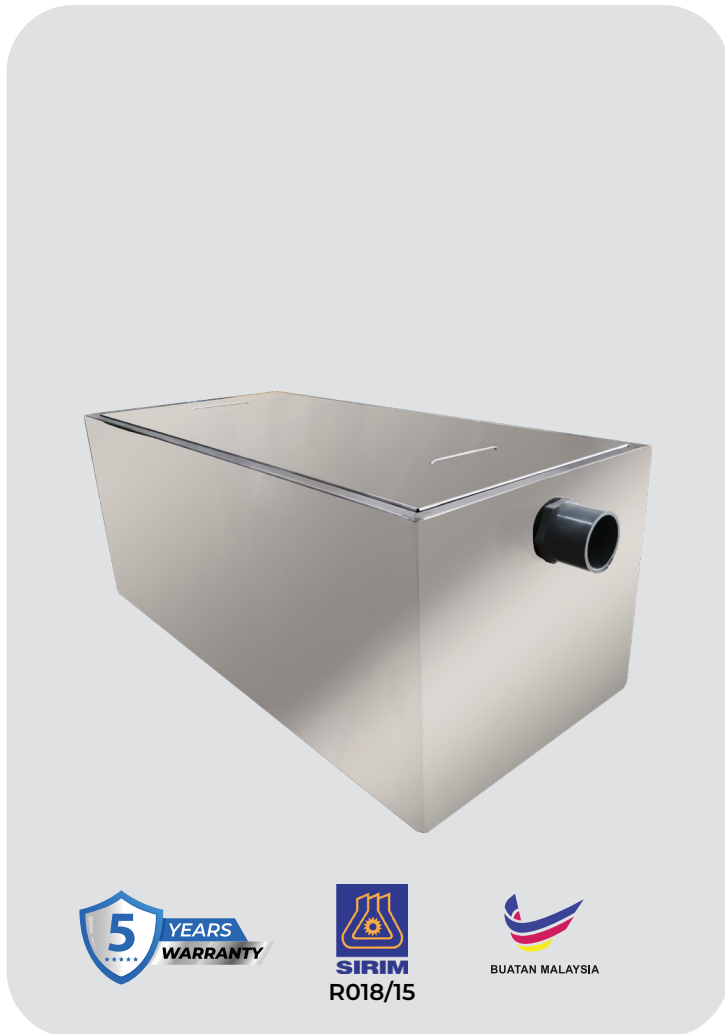


**Contact**  
+019-8685 301

**Website**  
<https://www.cleanflow.com.my>

**Address**  
No. 2-1, Jalan Op 1/6, One  
Puchong Business Park, 47160  
Puchong, Selangor



## Undersink Grease Trap

- Medium Size & Able install on underground

Model

**GT-15GPM**

Flowrate

**15 GPM**

Size ( L X W X H)

**24" X 12" X 12" Inch**

Capacity | Daily Meal

**57 Liter | 40-150**

Pipe Size

**40mm**

Material

**Stainless Steel Grade 304**

\* Upgrade available to Biomatic Grease Trap

\*The grease trap is without mini valve design, please let us know if you need it.

**CleanFlow Undersink Grease Trap** are placed in areas where oily wastewater flows. These devices are mandatory to capture drainage from grease-producing appliances and fixtures in food preparation areas. This includes sinks for washing pots, large soup pots or similar containers, wok cooking stations, floor drains or sinks used to drain kettles, automatic cooker hood cleaning units, pre-wash sinks, and dishwashers that don't have grinding mechanisms.

### Installation Preview



## Suitable For

- Light Use Restaurant Basin
- Preparation Sink
- Cup Washing Sink
- Cafe Basin
- Office Pantry
- Household & Residential
- Dishes Washing Basin
- Wok Stations