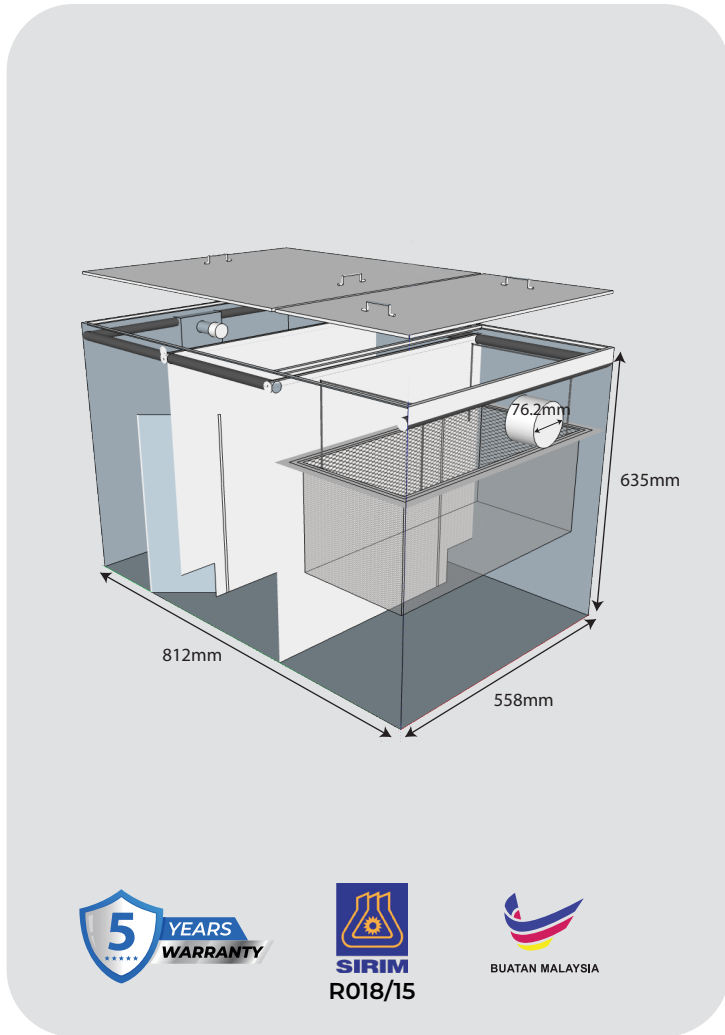


Contact
+019-8685 301

Website
<https://www.cleanflow.com.my>

Address
No. 2-1, Jalan Op 1/6, One
Puchong Business Park, 47160
Puchong, Selangor



Centralized Grease Trap

- Compact Size for Small-Medium Factory or workshop

Model

GT-50GPM

Flowrate

50 GPM

Size (L X W X H)

32" X 22" X 25" Inch

Capacity | Daily Meal

262 Liter | 400-600

Pipe Size

3 Inch

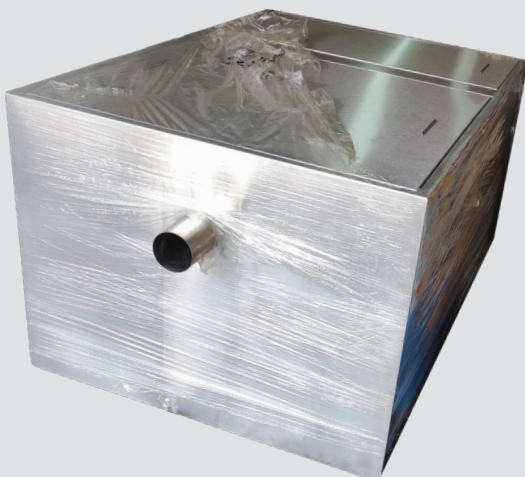
Material

Stainless Steel Grade 304

- * Upgrade available to Biomatic Grease Trap
- * Come with Checker Plate (Optional)

The CleanFlow Centralized Grease Trap is high Efficiency Industrial Grease Management System is a cost-effective, comprehensive solution to comply with DOE regulations for the proper separation of FOG from rinse water effluent. It comprises a professionally engineered physical grease interceptor system for efficient capture and retention of FOG. The drainage design of the system prevents cross-contamination of rainwater with oily rinse water effluent.

Installation Preview



Suitable For

- Restaurant Centralized Drainage
- Centre Kitchen Drainage
- Hospital or Institution
- Food Court
- Bars & Clubs
- Dish Washing Basin
- Dishes Washing Machine
- Heavy Sharing Washing Basin