

PVC-LINK®

POWERED FOR EXCELLENCE

HEAVY DUTY



→ CATALOGUE
PAGES
INSIDE

THE GLOBAL SPECIALIST
IN ELECTRICAL AND DIGITAL BUILDING INFRASTRUCTURES

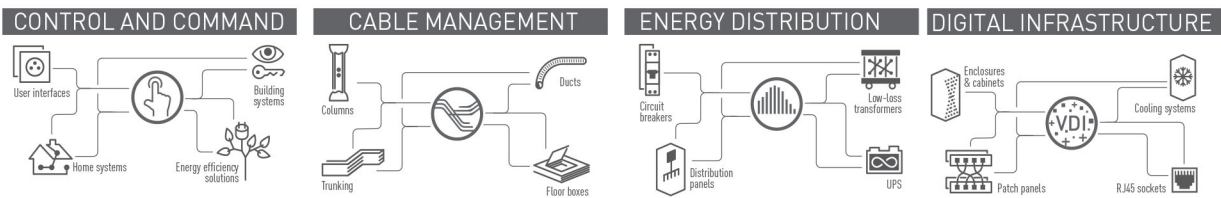
 **legrand®**

THE LEGRAND GROUP

A GLOBAL PLAYER

Legrand is the global specialist in electrical and digital building infrastructures. The group offers a comprehensive range of solution and services tailored to residential, commercial and industrial applications. The scope of its offering and its leading positions make Legrand a worldwide benchmark.

4 KEY AREAS OF EXPERTISE



TURNOVER
NEARLY
€6.6 BILLION
IN TOTAL SALES IN
2019

MORE THAN
36,000 EMPLOYEES

INNOVATION
**4.8% OF 2018
SALES
INVESTED
IN R&D**

A WIDE CHOICE
OF SOLUTIONS

OVER
**230,000
CATALOGUE
ITEMS**

**80 PRODUCT
FAMILIES**

SALES IN MORE THAN
80 COUNTRIES



HD
Heavy Duty
442112

Mechanical Protection for durability against compression and Impact forces compliances to IEC 61386-21

CONDUIT TESTED

for Excellence



1

COMPRESSION TEST

Endurability of compressive load over 1250N.



2

IMPACT TEST

Resilience to impact forces over 2kg mass of hammer with fall height of 300mm



3

NON-FLAME PROPAGATION

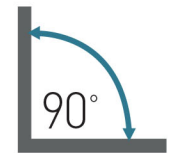
flame extinguished immediately after the source of the flame is removed.



4

ABLE TO FORM 90 DEGREE

with the aid of bending spring

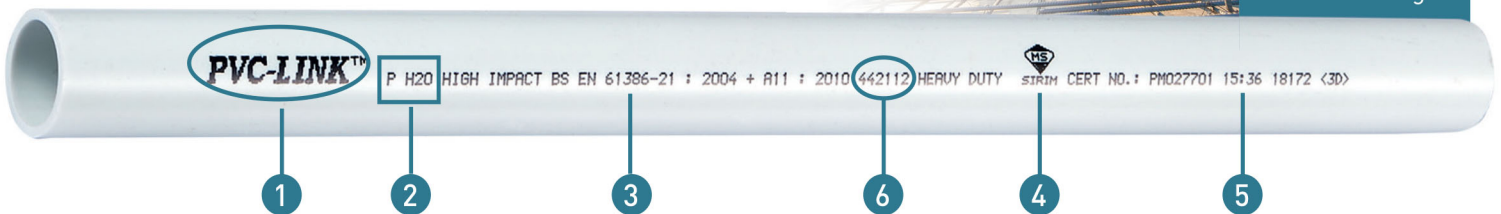


5

HIGH INTERNATIONAL QUALITY STANDARD

PVC-LINK is independently tested to meet the intended design and wiring application as stipulated by international standard IEC 61386 - 21

Delivers Heavy Duty performance with time saving & lower installation costs for high rise building



- 1 Manufacturer and/or Brand name identification
- 2 Product Code
- 3 Compliance with International Standard IEC 61386-21
- 4 Sirim marking & certification number
- 5 Exact date and time of manufacture for easy tracking

- 6 4- Compression rating (Rating 4 = Heavy Duty)
4- Impact rating (Rating 4 = Heavy Duty)
2- Min. Serving Temperature (Rating 2 = -5 °C)
1- Max. Serving Temperature (Rating 1 = +60 °C)
1- Bending resistance (Rating 1 = Rigid)
2- Electrical Characteristic (Rating 2 = With electrical insulating characteristics)



ONE BRAND FOR ALL SOLUTIONS

Over 10 product ranges (conduits, fittings, trunking, MCB boxes etc) for over thousand products. Your ultimate & ideal partner for all electrical solution where purchases & logistic are easily integrated.



ALWAYS MEET YOUR EXPECTATIONS

Stringent quality control and testing are employed for the International Electrotechnical Commission (IEC) 61386-21 Standard certification, which is the International Standard used for Conduit Systems for Cable Management. The manufacturing facility has also been awarded with ISO 9001:2015 Quality Management and ISO 14001:2015 Environmental Management Systems certifications.



PROVEN RELIABILITY FOR 30 YEARS OF SUCCESSFUL PROJECTS

The most recognized uPVC conduit solution provider in Malaysia that constantly strives for the best quality and services with many reputable successful project references.

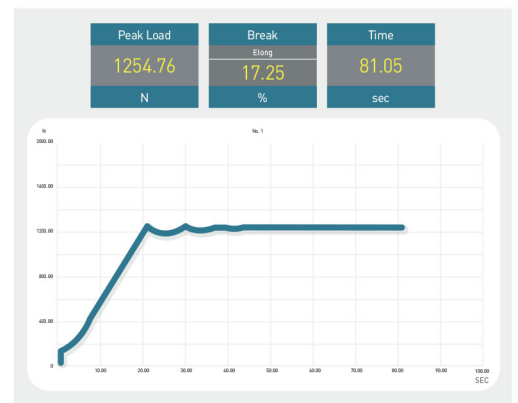


SAVE TIME ON INSTALLATION

Our product are tested under heavier conditions than the normative for an over performing quality that always guarantees time saving for you.



Impact Test



Compression Test

HIGH IMPACT HEAVY DUTY uPVC CONDUIT AND FITTINGS



High Impact Heavy Duty uPVC Conduit



| QTY/ PACK | CAT. NOS | SIZE (mm) | LENGTH (m) | COLOR |
|--------------|-------------|--------------|---------------|-------|
| 50 | EP H20 | 20 | 2.9 | W/O |
| 50 | EP H25 | 25 | 2.9 | W/O |
| 25 | EP H32 | 32 | 2.9 | W/O |
| 20 | EP H40 | 40 | 2.9 | W |
| 15 | EP H50 | 50 | 2.9 | W |

Terminal One Way Box



| QTY/ PACK | CAT. NOS | SIZE (mm) | DIAMETER (mm) | COLOR |
|--------------|-------------|--------------|------------------|-------|
| 100 | IPCB 20-1 | 20 | 65 | W/O/B |
| 100 | IPCB 25-1 | 25 | 65 | W/O/B |
| 100 | IPCB 32-1 | 32 | 75 | W/O/B |

Intersection Four Way Box (Ø 65 mm)



| QTY/ PACK | CAT. NOS | SIZE (mm) | COLOR |
|--------------|-------------|--------------|-------|
| 100 | IPCB 20-4 | 20 | W/O/B |
| 100 | IPCB 25-4 | 25 | W/O/B |
| 100 | IPCB 32-4 | 32 | W/O/B |

Through Two Way Box



| QTY/ PACK | CAT. NOS | SIZE (mm) | DIAMETER (mm) | COLOR |
|--------------|-------------|--------------|------------------|-------|
| 100 | IPCB 20-2 | 20 | 65 | W/O/B |
| 100 | IPCB 25-2 | 25 | 65 | W/O/B |
| 100 | IPCB 32-2 | 32 | 75 | W/O/B |

U, Y, H Way Box (Ø 65 mm)



| QTY/ PACK | CAT. NOS | SIZE (mm) | COLOR |
|--------------|-------------|--------------|-------|
| 100 | IPCB 20-H | 20 | W/B |
| 100 | IPCB 20-U | 20 | W/B |
| 100 | IPCB 20-Y | 20 | W/B |

Angle Two Way Box



| QTY/ PACK | CAT. NOS | SIZE (mm) | DIAMETER (mm) | COLOR |
|--------------|-------------|--------------|------------------|-------|
| 100 | IPCB 20-2A | 20 | 65 | W/O/B |
| 100 | IPCB 25-2A | 25 | 65 | W/O/B |
| 100 | IPCB 32-2A | 32 | 75 | W/O/B |

Lid Cover (Screw Type) (Ø 65 mm)



| QTY/ PACK | CAT. NOS | SIZE (mm) | COLOR |
|--------------|-------------|--------------|-------|
| 100 | IPLC | 20&25 | W/O/B |

Tee Three Way Box



| QTY/ PACK | CAT. NOS | SIZE (mm) | DIAMETER (mm) | COLOR |
|--------------|-------------|--------------|------------------|-------|
| 100 | IPCB 20-3 | 20 | 65 | W/O/B |
| 100 | IPCB 25-3 | 25 | 65 | W/O/B |
| 100 | IPCB 32-3 | 32 | 75 | W/O/B |

Protector Cover (Clip Type)



| QTY/ PACK | CAT. NOS | SIZE (mm) | DIAMETER (mm) | COLOR |
|--------------|-------------|--------------|------------------|-------|
| 100 | IPPC | 20&25 | 65 | W/O/B |
| 100 | IPPC 32 | 32 | 75 | B/W |



Color = W-White, B-Black, O-Orange

FITTINGS


Bending Spring



| QTY/ PACK | CAT. NOS | SIZE (mm) | TYPE |
|--------------|-------------|--------------|--------|
| 30 | OPS 20 | 20 | round |
| 30 | OPS 25 | 25 | round |
| 10 | OPS 32 | 32 | round |
| 25 | * OUS 20 | 20 | square |
| 25 | * OUS 25 | 25 | square |
| 10 | * OUS 32 | 32 | square |


* Heavy Duty

Inspection Tee



| QTY/ PACK | CAT. NOS | SIZE (mm) | COLOR |
|--------------|-------------|--------------|-------|
| 100 | IPIT 20 | 20 | W/O/B |
| 100 | IPIT 25 | 25 | W/O/B |

Coupling




| QTY/ PACK | CAT. NOS. | SIZE (mm) | COLOR |
|--------------|--------------|--------------|-------|
| 100 | IPC 20 | 20 | W/O/B |
| 100 | IPC 25 | 25 | W/O/B |
| 100 | IPC 32 | 32 | W/O/B |
| 100 | IPC 40 | 40 | W/O |
| 100 | IPC 50 | 50 | W/B |

Inspection Bend



| QTY/ PACK | CAT. NOS | SIZE (mm) | COLOR |
|--------------|-------------|--------------|-------|
| 100 | IPIB 20 | 20 | W/O/B |
| 100 | IPIB 25 | 25 | W/O/B |

Female Adaptor




| QTY/ PACK | CAT. NOS | SIZE (mm) | COLOR |
|--------------|-------------|--------------|-------|
| 100 | IPFA 20 | 20 | W/O/B |
| 100 | IPFA 25 | 25 | W/O/B |
| 100 | IPFA 32 | 32 | W/B |

Inspection Elbow



| QTY/ PACK | CAT. NOS | SIZE (mm) | COLOR |
|--------------|-------------|--------------|-------|
| 100 | IPIE 20 | 20 | W/O/B |
| 100 | IPIE 25 | 25 | W/O/B |

Reducer




| QTY/ PACK | CAT. NOS | SIZE (mm) | COLOR |
|--------------|-------------|--------------|-------|
| 100 | IPR 20 | 25-20 | W/O/B |
| 100 | IPR 32 | 32-25 | W |

Solid Bend



| QTY/ PACK | CAT. NOS | SIZE (mm) | COLOR |
|--------------|-------------|--------------|-------|
| 100 | EPSB 32 | 32 | W |
| 100 | EPSB 40 | 40 | W |
| 100 | EPSB 50 | 50 | W |


Bar Saddle



| QTY/ PACK | CAT. NOS | SIZE (mm) | COLOR |
|--------------|-------------|--------------|-------|
| 100 | IPBS 20 | 20 | W/O/B |
| 100 | IPBS 20+S | 20 | W |
| 100 | IPBS 25 | 25 | W/O/B |
| 100 | IPBS 25+S | 25 | W |
| 100 | OPBS 32 | 32 | W |
| 100 | OPBS 40 | 40 | W |

* +s = included with screw

Spring Clip Saddle



| QTY/ PACK | CAT. NOS | SIZE (mm) | COLOR |
|--------------|-------------|--------------|-------|
| 100 | IPSCS 20 | 20 | W/O/B |
| 100 | IPSCS 25 | 25 | W/O |
| 100 | IPSCS 32 | 32 | W/O |

Color = W-White, B-Black, O-Orange

FITTINGS

Extension Ring (Ø 65 mm)



| QTY/ PACK | CAT. NOS | HEIGHT (mm) | COLOR |
|--------------|-------------|----------------|-------|
| 100 | IPER-L | 25 | W/B |
| 100 | IPER-H | 38 | W/O/B |
| 100 | IPER-H50 | 50 | W/B |

Partition Box



| QTY/ PACK | CAT. NOS | SIZE (INCH) | TYPE | COLOR |
|--------------|-------------|----------------|---------|-------|
| 100 | IPPB-1 | 3"x3" | 1 Gang | W |
| 50 | IPPB-2 | 3"x6" | 2 Gang | W |
| 50 | IPPB-3 | 3"x7" | 2x1Gang | W |

Loop in Box (Ø 65 mm)



| QTY/ PACK | CAT. NOS | SIZE (mm) | COLOR |
|--------------|-------------|--------------|-------|
| 600 | IPCLIB | 20 | W |

Angle Floor Box



| QTY/ PACK | CAT. NOS | SIZE (INCH) | TYPE | COLOR |
|--------------|-------------|----------------|----------|-------|
| 100 | *IPAFB-1 | 3"x3" | 1 Gang | W |
| 50 | *IPAFB-2 | 3"x6" | 2 Gang | W |
| 50 | *IPAFB-3 | 3"x7" | 2x1 Gang | W |

* Unbreakable Polycarbonate Version available upon request

Dome Cover



PDC



PDC-C

| QTY/ PACK | CAT. NOS | SIZE (mm) | DIAMETER (mm) | COLOR |
|--------------|-------------|--------------|------------------|-------|
| 100 | IPDC 20 | 20 | 65 | W/O/B |
| 100 | IPDC 25 | 25 | 65 | W/B |
| 100 | IPDC-C 20 | 20 | 65 | W/O/B |
| 100 | IPDC-C 25 | 25 | 65 | W/O |

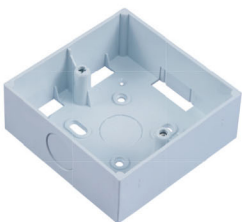
Blank Plate



| QTY/ PACK | CAT. NOS | SIZE (INCH) | TYPE | COLOR |
|--------------|-------------|----------------|--------|-------|
| 100 | *IPBP-1-HD | 3"x3" | 1 Gang | W |
| 100 | IPBP-1 | 3"x3" | 1 Gang | W |
| 100 | IPBP-2 | 3"x6" | 2 Gang | W |

* HD = Heavy Duty

Surface Mounting Box



| QTY/ PACK | CAT. NOS | SIZE (INCH) | TYPE | COLOR |
|--------------|-------------|----------------|---------|-------|
| 100 | IPSMB-1 | 3"x7" | 1 Gang | W |
| 50 | IPSMB-2 | 3"x6" | 2 Gang | W |
| 50 | IPSMB-3 | 3"x7" | 2x1Gang | W |
| 40 | IPSMB-4 | 3"x10" | 3x1Gang | W |
| 30 | IPSMB-5 | 3"x13" | 4x1Gang | W |

Concealed Box Cover



| QTY/ PACK | CAT. NOS | SIZE (INCH) | TYPE | COLOR |
|--------------|-------------|----------------|--------|-------|
| 100 | IPK0BC-1 | 3"x3" | 1 Gang | W |
| 100 | IPK0BC-2 | 3"x6" | 2 Gang | W |

Concealed Box



| QTY/ PACK | CAT. NOS | SIZE (INCH) | TYPE | COLOR |
|--------------|-------------|----------------|---------|-------|
| 100 | IPKOB-1 | 3"x3" | 1 Gang | W/B |
| 50 | IPKOB-2 | 3"x6" | 2 Gang | W/B |
| 50 | IPKOB-3 | 3"x7" | 2x1Gang | W |

Connectable Concealed Box



| QTY/ PACK | CAT. NOS | SIZE (INCH) | TYPE | COLOR |
|--------------|-----------------------|----------------|-------|-------|
| 100 | IPKOB-1C | 3"x3" | 1Gang | W |
| 100 | IPKOB-1C-H (50 mm) | 3"x3" | 1Gang | W |

Color = W-White, B-Black, O-Orange



FITTINGS

Adjustable Concealed Box



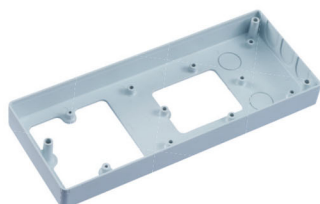
| QTY/ PACK | CAT. NOS | SIZE (INCH) | TYPE | COLOR |
|--------------|-------------|----------------|----------|-------|
| 100 | IPKOB-1A | 3"x3" | 1 Gang | W |
| 50 | IPKOB-3A | 3"x7" | 2x1 Gang | W |

Vertical Concealed Box



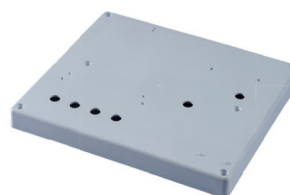
| QTY/ PACK | CAT. NOS | SIZE (INCH) | TYPE | COLOR |
|--------------|-------------|----------------|--------|-------|
| 100 | IPKOB-1V | 3"x3" | 1 Gang | W |

Fan Regulator Board



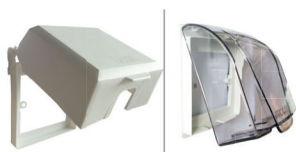
| QTY/ PACK | CAT. NOS | WXH (mm) | COLOR |
|--------------|-------------|-------------|-------|
| 50 | IPFRB 410 | 97 x 225 | W |

Meter Block



| QTY/ PACK | CAT. NOS | WxH (mm) | COLOR |
|--------------|-------------|-------------|-------|
| 25 | IPMB 910 | 250 x 225 | W |

Weatherproof Protective Cover



Heavy Duty

| QTY/ PACK | CAT. NOS | TYPE | COLOR |
|--------------|-------------|--------|-------|
| 100 | IPWPC-1 | 1 Gang | S/T/W |
| 100 | *IPWPC-1-HD | 1 Gang | S/T/W |
| 100 | OPWPC-2 | 2 Gang | W |

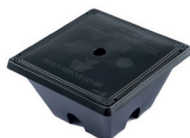
*HD= Heavy duty

Earth Tape Clip



| QTY/ PACK | CAT. NOS | SIZE (mm) | COLOR |
|--------------|-------------|--------------|-------|
| 100 | IPETC | 25x3 | BR |

Earth Chamber



| QTY/ PACK | CAT. NOS | LxWxH (mm) | COLOR |
|--------------|-------------|---------------|-------|
| 50 | IPEC | 175x175x90 | B |

Heavy Duty Earth Chamber



| QTY/ PACK | CAT. NOS | LxWxH (mm) | COLOR |
|--------------|-------------|-----------------|-------|
| 1 | IPEC-HD | 245 x 245 x 210 | B |

*HD= Heavy Duty

Color = W-White, B-Black, S-Smokey, T-Transparent

ELECTRICAL ACCESSORIES

MCB Box



| QTY/ PACK | CAT. NOS | WAY | LxWxH (mm) | COLOR |
|--------------|-------------|-----|---------------|-------|
| 40 | IPL 06-10 | 10 | 222x146x98 | S/T |
| 30 | IPL 08-12 | 12 | 256x176x98 | S/T |
| 25 | IPL 12-16 | 16 | 327x176x98 | S/T |
| 25 | IPL 15-19 | 19 | 381x176x98 | S/T |
| 20 | IPL 19-23 | 23 | 454x176x98 | S/T |
| 12 | IPL 28 | 28 | 290x370x120 | S/T/W |
| 10 | IPL 42 | 42 | 290x495x120 | S/T/W |
| 10 | OPL 45 | 45 | 455x315x110 | W |
| 10 | OPL 48 | 48 | 290x495x120 | W |

ELCB/ MCB Box



| QTY/ PACK | CAT. NOS | WAY | LxWxH (mm) | COLOR |
|--------------|-------------|-------|---------------|-------|
| 130 | IPL 2 | 2 WAY | 150 x 48 x 70 | W |
| 72 | IPL 4 | 4 WAY | 150 x 84 x 70 | W |

MCB Spacer



| QTY/ PACK | CAT. NOS | WAY | LxWxH (mm) | COLOR |
|--------------|-------------|-------|---------------|-------|
| 1000 | IPMS | 12WAY | 215x53 | W |

* made to order for non-flame propagation



- High Impact Resistance HIPS material
- Top to bottom lid cover
- High Grade Copper Terminal
- Fast Clip between cover to circuit breaker din rail
- Numerical identification for easy installation



Discover more of
Practibox S new plastic cabinets
& RX3 Essential Protection

Color = W-White, S-Smokey, T-Transparent



ELECTRICAL ACCESSORIES

13A Main Tester



| QTY/ PACK | CAT. NOS | ELCB TESTER | COLOR |
|--------------|--------------|----------------|-------|
| 12 | OPMT 13E | 150mA | BL |
| 12 | OPMT 13E-300 | 300mA | BL |

Wire Puller



| QTY/ PACK | CAT. NOS | LENGTH (m) | DIAMETER (mm) | COLOR |
|--------------|-------------|---------------|------------------|-------|
| 30 | EPWP 4515 | 15 | 4.5 | W |
| 20 | EPWP 4530 | 30 | 4.5 | W |
| 10 | EPWP 4550 | 50 | 4.5 | W |
| 5 | EPWP 45100 | 100 | 4.5 | W |

Line Tap

(with feet)



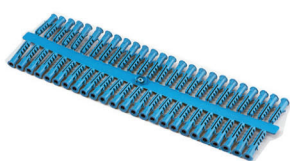
| QTY/ PACK | CAT. NOS | CABLE SIZE (mm) ² | COLOR |
|--------------|-------------|---------------------------------|-------|
| 8 | OPLT 16 | 16 | W |
| 8 | OPLT 25 | 25 | W |
| 8 | OPLT 35 | 35 | W |
| 8 | OPLT 50 | 50 | W |
| 8 | OPLT 70 | 70 | W |

Twisted HD Wire Puller



| QTY/ PACK | CAT. NOS | LENGTH (m) | DIAMETER (mm) | COLOR |
|--------------|-------------|---------------|------------------|-------|
| 10 | OPHWP 15 | 15 | 5.5x2 | B |
| 5 | OPHWP 30 | 30 | 5.5x2 | B |

Wall Plug



| QTY/ PACK | CAT. NOS | SIZE (mm) | COLOR |
|--------------|-------------|--------------|--------|
| 25 | IPWP 6 | 6 | B/BL/Y |

Color = W-White, O-Orange, B-Black, BL- Blue, Y- Yellow

Telecommunication Wire Puller



| QTY/ PACK | CAT. NOS | LENGTH (m) | DIAMETER (mm) | COLOR |
|--------------|----------------|---------------|------------------|-------|
| 1 | OPTWP-120-F | 120 | 11 | 0 |
| 1 | OPTWP-150-F | 150 | 11 | 0 |
| 1 | OPTWP-225-F | 225 | 11 | 0 |
| 1 | OPTWP-260/14-F | 260 | 14 | 0 |
| 1 | OPTWP-305/14-F | 305 | 14 | 0 |

Rolling Frame

CORRUGATED CONDUIT AND FITTINGS



Corrugated Conduits

| QTY/ PACK | CAT. NOS | SIZE (mm) | LENGTH (m) | COLOR |
|--------------|-------------|--------------|---------------|-------|
| 3 | OPCC 7 | 7 | 300 | B |
| 3 | *OPCC 7 BC | 7 | 300 | B |
| 3 | OPCC 10 | 10 | 200 | B |
| 3 | *OPCC 10 BC | 10 | 200 | B |
| 7 | EPCC 16 | 16 | 50 | B/W |
| 7 | *EPCC 16 BC | 16 | 50 | B |
| 3 | EPCC 32 | 32 | 25 | B/W |
| 3 | EPCC 40 | 40 | 25 | B/W |
| 3 | EPCC 50 | 50 | 25 | B/W |
| 1 | OPCC 65 | 65 | 200 | B |

*BC - Cut Type

Corrugated Conduits (Non flame propagation)

| QTY/ PACK | CAT. NOS | SIZE (mm) | LENGTH (m) | COLOR |
|--------------|-------------|--------------|---------------|-------|
| 7 | EPCC 20 | 20 | 50 | W/O/B |
| 7 | EPCC 25 | 25 | 50 | W/O/B |

* Fittings are supply separately.

Corrugated Conduit Adaptor (Clip Type)

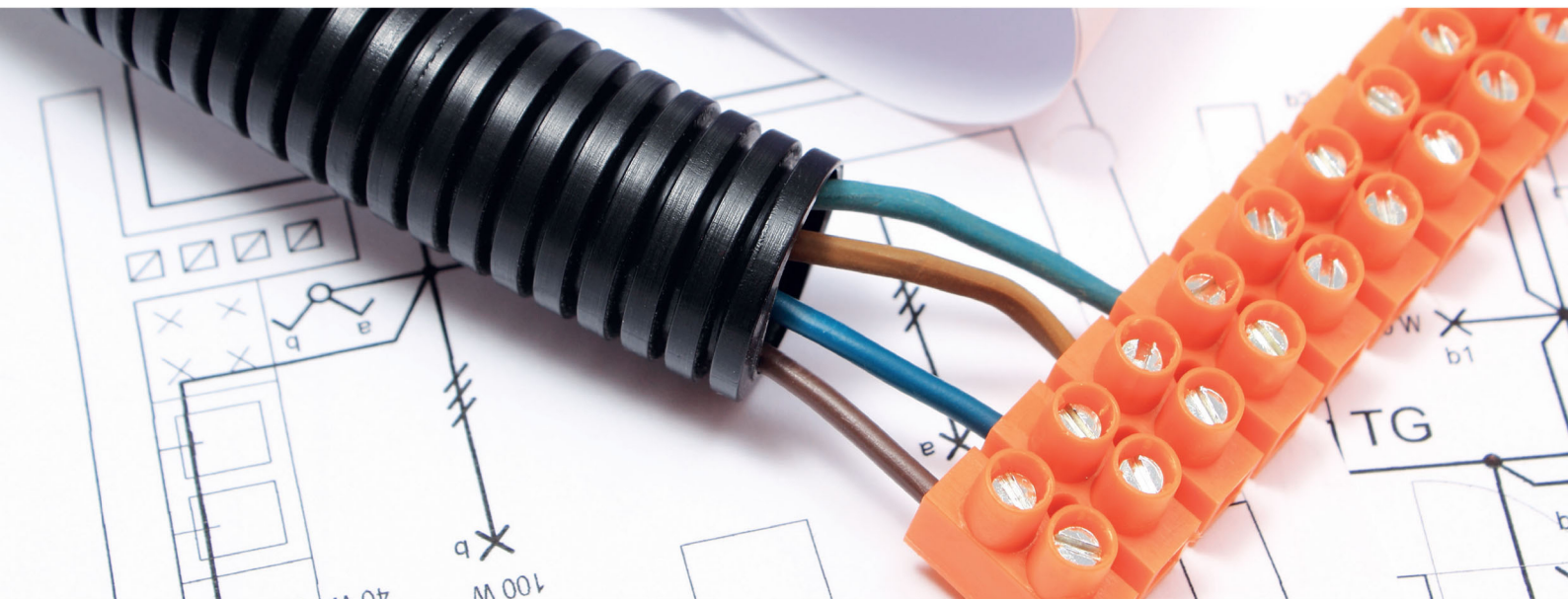


| QTY/ PACK | CAT. NOS | SIZE (mm) | COLOR |
|--------------|-------------|--------------|-------|
| 100 | IPCCA-C 20 | 20 | W/O/B |
| 100 | IPCCA-C 25 | 25 | W/O/B |

Corrugated Conduit Adaptor (Screw Type)



| QTY/ PACK | CAT. NOS | SIZE (mm) | COLOR |
|--------------|-------------|--------------|-------|
| 100 | OPPCA 16 | 16 | B |
| 100 | IPCCA 20 | 20 | W/O/B |
| 100 | IPCCA 25 | 25 | W/O/B |
| 10 | OPCCA 32 | 32 | B |
| 10 | OPCCA 40 | 40 | B |
| 10 | OPCCA 50 | 50 | B |



- Wiring
Protection


- Easy
Maintenance


- Safe
Installation


- Cost
Saving

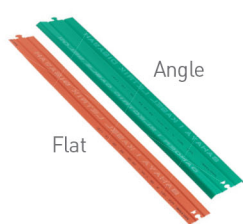

- Fast
Installations



Color = W-White, O-Orange, B-Black

TELEPHONE TRUNKING, CABLE SLAP, ACCESSORIES

Cable Slab - Flat/Angle



| QTY/ PACK | CAT. NOS | SIZE (mm) | LENGTH (m) | COLOR |
|--------------|-------------|--------------|---------------|--------|
| 100 | EPCS 120F | 120 | 1 | GN/O/Y |
| 50 | EPCS 150F | 150 | 1 | GN/O/Y |
| 50 | EPCS 200F | 200 | 1 | GN/O/Y |

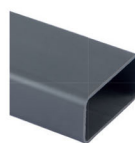
Embossed word:
Centra: DANGER! ELECTRIC CABLE BELOW

| | | | | |
|----|----------|-----|---|--------|
| 50 | EPCS250A | 250 | 1 | GN/O/Y |
|----|----------|-----|---|--------|

Embossed word:
Top : BAHAYA! KABEL LETRIK DI BAWAH
Bottom : DANGER! ELECTRIC CABLE BELOW

Color = Orange (HV), Green (LV/ Telecom), Yellow (Gas)

Rectangular Telephone Trunking



| QTY/ PACK | CAT. NOS | DUTY | LENGTH (m) | WxH (mm) | COLOR |
|--------------|-------------|------|---------------|-------------|-------|
| 10 | EPPT 12 | MD | 3.65 | 50x25 | G |
| 10 | EPPT 13 | MD | 3.65 | 75x25 | G |
| 10 | EPPT 14 | MD | 3.65 | 100x25 | G |

MD: Medium duty

Hazard Tape



| QTY/ PACK | CAT. NOS | WIDTH (mm) | LENGTH (m) | COLOR |
|--------------|-------------|---------------|---------------|-------|
| 1 | OPHT3Y-E | 75 | 610 | Y |
| 1 | OPHT6Y-E | 150 | 305 | Y |
| 1 | OPHT60-T | 150 | 305 | O |

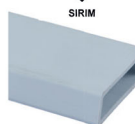
* Other colours and wording available upon request.

* Printing -E: BAHAYA! KABEL LETRIK DIBAWAH
DANGER! ELECTRIC CABLE BELOW

* Printing -T: AWAS! KABEL TELEKOM DI BAWAH
HUBUNGI TELEKOM: TEL 100

Color = Orange (HV), Green (LV/ Telecom), Yellow (Gas)

Rectangular Telephone Trunking



| QTY/ PACK | CAT. NOS. | DUTY | LENGTH (m) | WxH (mm) | THICKNESS (mm) | COLOR |
|--------------|--------------|------|---------------|-------------|-------------------|-------|
| 10 | EPUFD 223 | HD | 2.9 | 50x25 | 2.3 | W |
| 10 | EPUFD 325 | HD | 2.9 | 75x25 | 2.5 | W |
| 10 | EPUFD 427 | HD | 2.9 | 100x25 | 2.7 | W |

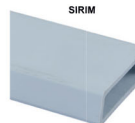
HD: Heavy duty

TNB Casing



| QTY/ PACK | CAT. NOS | LENGTH (m) | WxH (mm) | COLOR |
|--------------|-------------|---------------|-------------|-------|
| 80 | EPTC2W-32 | 1.83 | 36X13 | W |
| 60 | EPTC3W-40 | 1.83 | 45X13 | W |
| 60 | EPTC4W-50 | 1.83 | 55X13 | W |

Rectangular Telephone Trunking - 38mm Height



| QTY/ PACK | CAT. NOS | DUTY | LENGTH (m) | WxH (mm) | THICKNESS (mm) | COLOR |
|--------------|-------------|------|---------------|-------------|-------------------|-------|
| 10 | EPUFD 232 | HD | 2.9 | 50x38 | 3.2 | W |
| 10 | EPUFD 332 | HD | 2.9 | 75x38 | 3.2 | W |
| 10 | EPUFD 432 | HD | 2.9 | 100x38 | 3.2 | W |

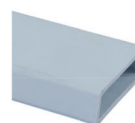
HD: Heavy duty

TNB Clip & Junction Box



| QTY/ PACK | CAT. NOS | WxH (mm) | COLOR |
|--------------|-------------|-------------|-------|
| 100 | IPTCC 32 | 15X32 | W |
| 100 | IPTCC 40 | 15X45 | W |
| 100 | IPTCC 50 | 15X55 | W |
| 100 | IPTCJB | 68X107 | W |

Trapezoidal Telephone Trunking



| QTY/ PACK | CAT. NOS | DUTY | LENGTH (m) | WXH (mm) | THICKNESS (mm) | COLOR |
|--------------|-------------|------|---------------|-------------|-------------------|-------|
| 10 | EPUFDT 225 | VHD | 2.9 | 50x25 | 2.5 | W |
| 10 | EPUFDT 332 | VHD | 2.9 | 75x25 | 3.2 | W |
| 10 | EPUFDT 432 | VHD | 2.9 | 100x25 | 3.2 | W |

VHD: Very heavy duty

Color = W-White, GN- Green, G-Grey, Y- Yellow, O-Orange

WEATHERPROOF ENCLOSURE BOX IP66, JUNCTION BOX IP44 & CABLE GLAND IP68

Weatherproof Enclosure Box IP66 & Junction Box IP44



Weatherproof Cable Pg Gland IP68



| QTY/ PACK | CAT NOS | CABLE DIAMETER (mm) | MOUNTING HOLE (mm) | COLOR |
|--------------|------------|---------------------------|--------------------------|-------|
| 100 | OPPG-7 | 3-6 | 13 | G |
| 100 | OPPG-9 | 4-8 | 16 | G |
| 100 | OPPG-11 | 5-10 | 19 | G |
| 100 | OPPG-13.5 | 7-12 | 20 | G |
| 50 | OPPG-16 | 10-14 | 23 | G |
| 50 | OPPG-21 | 13-18 | 29 | G |
| 50 | OPPG-29 | 18-25 | 37 | G |
| 10 | OPPG-36 | 22-32 | 48 | G |
| 10 | OPPG-42 | 30-38 | 54 | G |
| 10 | OPPG-48 | 34-44 | 60 | G |
| 10 | OPPG-63 | 42-50 | 73 | G |

| QTY/ PACK | CAT. NOS | LxWxH (mm) | COLOR |
|--------------|-------------|---------------|-------|
| 150 | IPEB 442 | 110 x110x60 | G/T |
| 90 | IPEB 444 | 110x110x110 | G/T |
| 72 | IPEB 643 | 155x115x80 | G/T |
| 50 | IPEB 644 | 155x115x110 | G/T |
| 42 | IPEB 863 | 215x150x80 | G/T |
| 30 | IPEB 864 | 215x150x110 | G/T |
| 36 | IPEB 883 | 215x215x80 | G/T |
| 28 | IPEB 884 | 215x215x110 | G/T |
| 20 | IPEB 1084 | 250x200x110 | G/T |
| 14 | IPEB 1086 | 250x200x160 | G/T |
| 12 | IPEB 1296 | 310x230x145 | G/T |
| 9 | IPEB 15127 | 390x310x180 | G/T |
| 4 | OPEB18155 | 465x385x140 | G |
| 120 | * IPJB 331 | 80x80x40 | G |

- ABS thermoplastic
- IP66 Dust/weatherproof
- High impact strength
- Temperature range from -5°C ~ +70°C
- Chemical resistance to aqueous acids, alkalis, seawater, concentrated phosphoric & hydrochloric acid
- Polycarbonate version available upon request

*Other color available upon MTO request
* IPJB 331 - Junction Box IP44

Index of protection Degrees of protection provided by enclosures for electrical equipment (IP code)

According to standards: IEC 60529, BS EN 60529 and NF EN 60529

| 1 st digit: protection against solid foreign objects | | | 2 nd digit: protection against ingress of water | | | Additional letter: protection against access to hazardous parts | | |
|---|-------|--|--|-------|---|---|-------|---|
| IP | tests | protection | IP | tests | protection | IP | tests | protection |
| 0 | | No protection | 0 | | No protection | | | |
| 1 | | Protected against solid bodies larger than 50 mm | 1 | | Protected against vertically-falling drops of water (condensation) | A | | The back of the hand remains remote from dangerous parts |
| | | | 2 | | Protected against drops of water falling at up to 15° from the vertical | | | |
| 2 | | Protected against solid bodies larger than 12.5 mm | 3 | | Protected against drops of rain water at up to 60° from the vertical | B | | The dangerous parts can not be touched when introducing a finger |
| | | | 4 | | Protected against projections of water from all directions | | | |
| 3 | | Protected against solid bodies larger than 2.5 mm | 5 | | Protected against jets of water from all directions | C | | The dangerous parts can not be touched when introducing a tool (eg a screwdriver) |
| | | | 6 | | Protected against jets of water of similar force to heavy seas | | | |
| 4 | | Protected against solid bodies larger than 1 mm | 7 | | Protected against the effect of immersion | | | |
| 5 | | Protected against dust (no harmful deposit) | 8 | | Protected against prolonged effects of immersion under pressure | | D | |
| 6 | | Completely protected against dust | 9 | | Protected against high pressure and temperature water jets | | | |

(1) In accordance to ISO 20653

MINI, MODULAR & ROUND TRUNKING

Mini Trunking



| QTY/ PACK | CAT. NOS | WxH (mm) | LENGTH (m) | COLOR |
|--------------|-------------|-------------|---------------|-------|
| 160 | EPMT 1020 | 20x10 | 1.83 | W |
| 120 | EPMT 1327 | 27x13 | 1.83 | W |
| 120 | EPMT 1330 | 30x13 | 1.83 | W |
| 80 | EPMT 1640 | 40x16 | 1.83 | W |
| 80 | EPMT 2040 | 40x20 | 1.83 | W |
| 80 | EPMT 1650 | 50x16 | 1.83 | W |

Modular Trunking



| QTY/ PACK | CAT. NOS | WxH (mm) | LENGTH (m) | COLOR |
|--------------|----------------|-------------|---------------|-------|
| 40 | EPMT 3250 | 50x32 | 1.83 | W |
| 25 | EPMT 5550 | 50x55 | 1.83 | W |
| 20 | EPMT 5575 | 75x55 | 1.83 | W |
| 15 | EPMT 55100 | 100x55 | 1.83 | W |
| 12 | EPMT 75100 | 100x75 | 1.83 | W |
| 2 | EPMT 100100-2M | 100x100 | 2.00 | W |
| 2 | EPMT 100150-2M | 100x150 | 2.00 | W |
| 2 | OPMT 55200-2M | 200x55 | 2.00 | W |
| 2 | OPMT 100200-2M | 200x100 | 2.00 | W |

2 Compartment Trunking



| QTY/ PACK | CAT. NOS | WxH (mm) | LENGTH (m) | COLOR |
|--------------|----------------|-------------|---------------|-------|
| 10 | OPMT2C 2040-2M | 40x20 | 2.00 | W |
| 10 | OPMT2C 2060-2M | 60x20 | 2.00 | W |
| 10 | OPMT2C 3280-2M | 80x32 | 2.00 | W |

Round Duct



| QTY/ PACK | CAT. NOS | WxH (mm) | LENGTH (m) | COLOR |
|--------------|-------------|-------------|---------------|-------|
| 75 | EPRD 30 | 30x8 | 2.00 | G |
| 50 | EPRD 50 | 50x13 | 2.00 | G |
| 25 | EPRD 70 | 70x15 | 2.00 | G |
| 24 | EPRD 90 | 90x22 | 2.00 | G |
| 12 | EPRD 120 | 120x30 | 2.00 | G |

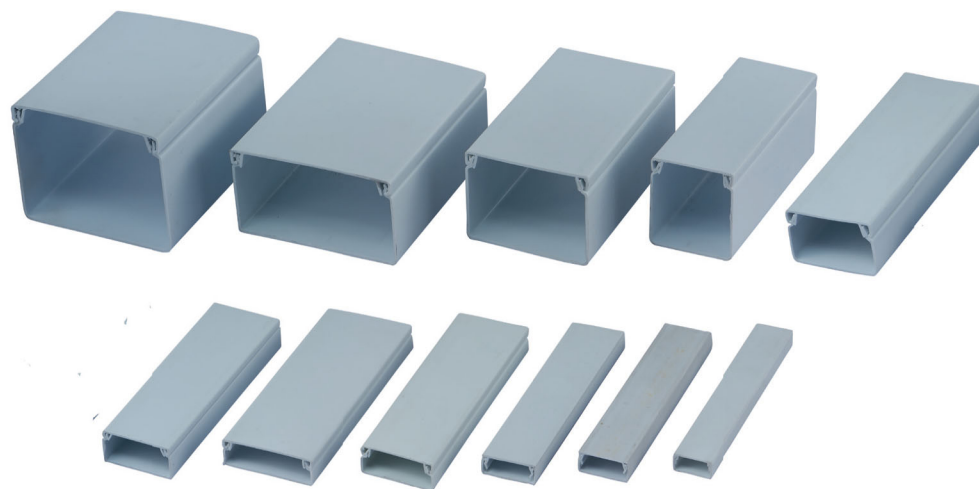
3 Compartment Trunking



| QTY/ PACK | CAT. NOS | WxH (mm) | LENGTH (m) | COLOR |
|--------------|-----------------|-------------|---------------|-------|
| 10 | OPMT3C 40100-2M | 100x40 | 2.00 | W |

PVC-LINK®

High Impact uPVC Round Duct is constructed from specially formulated high impact polyvinyl chloride. The distinctive design feature provides safe and secure cable management at all time.

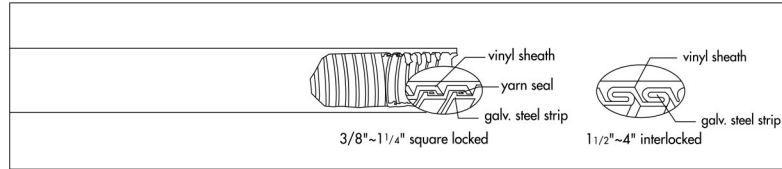


*Other color available upon MTO request
Color: W- White, G-Grey



HEAVY GAUGE WATERTIGHT FLEXIBLE CONDUIT & ADAPTOR (EF TYPE)

Watertight Flexible Conduit (EF Type)



| QTY/ PACK | CAT. NOS | SIZE (INCH) | VINYL SHEATH THICKNESS (mm) | MIN. BENDING RADIUS (mm) | COIL (m) |
|--------------|--------------|----------------|--------------------------------|-----------------------------|-------------|
| 1 | OPBA 206703 | 3/8 | 1.0 | 60 | 50 |
| 1 | OPBA 206704 | 1/2 | 1.0 | 80 | 50 |
| 1 | OPBA 206704T | 1/2 | 1.0 | 80 | 50 |
| 1 | OPBA 206706 | 3/4 | 1.0 | 100 | 30 |
| 1 | OPBA 206706T | 3/4 | 1.0 | 100 | 30 |
| 1 | OPBA 206710 | 1 | 1.0 | 150 | 30 |
| 1 | OPBA 206712 | 1 1/4 | 1.5 | 180 | 20 |
| 1 | OPBA 206714 | 1 1/2 | 1.5 | 220 | 20 |
| 1 | OPBA 206720 | 2 | 1.5 | 250 | 15 |
| 1 | OPBA 206724 | 2 1/2 | 2.0 | 300 | 10 |
| 1 | OPBA 206730 | 3 | 2.0 | 450 | 10 |
| 1 | OPBA 206740 | 4 | 2.0 | 600 | 5 |

- Galvanized steel core, with flame retardent PVC coated.
- High flexibility, absolutely moisture-proof.
- Absorbs motion, vibration and bending indenitely.
- Cord packing size form 3/8" through 1-1/4" by squarelocked. 1-1/2" through 4" by interlocked.
- Temperature range from - 10 °C ~ +70 °C.
- IP66 Dust / weatherproof

*T= Sirim tested

Watertight Straight Adaptor



| QTY/ PACK | CAT. NOS | SIZE (INCH) | THREAD |
|--------------|-------------|----------------|--------|
| 100 | OPBB 210103 | 3/8 | MM/NPT |
| 100 | OPBB 210104 | 1/2 | MM/NPT |
| 100 | OPBB 210106 | 3/4 | MM/NPT |
| 100 | OPBB 210110 | 1 | MM/NPT |
| 100 | OPBB 210112 | 1 1/4 | NPT |
| 100 | OPBB 210114 | 1 1/2 | NPT |
| 100 | OPBB 210120 | 2 | NPT |
| 100 | OPBB 210124 | 2 1/2 | NPT |
| 100 | OPBB 210130 | 3 | NPT |
| 100 | OPBB 210140 | 4 | NPT |

Watertight 90° Elbow Adaptor



| QTY/ PACK | CAT. NOS | SIZE (INCH) | THREAD |
|--------------|-------------|----------------|--------|
| 100 | OPBL 210103 | 3/8 | NPT |
| 100 | OPBL 210104 | 1/2 | NPT |
| 100 | OPBL 210106 | 3/4 | NPT |
| 100 | OPBL 210110 | 1 | NPT |
| 100 | OPBL 210112 | 1 1/4 | NPT |
| 100 | OPBL 210114 | 1 1/2 | NPT |
| 100 | OPBL 210120 | 2 | NPT |
| 100 | OPBL 210124 | 2 1/2 | NPT |
| 100 | OPBL 210130 | 3 | NPT |
| 100 | OPBL 210140 | 4 | NPT |

Watertight Coupling



| QTY/ PACK | CAT. NOS | SIZE (INCH) | THREAD |
|--------------|-------------|----------------|--------|
| 100 | OPBC 210103 | 3/8 | PT |
| 100 | OPBC 210104 | 1/2 | PT |
| 100 | OPBC 210106 | 3/4 | PT |
| 100 | OPBC 210110 | 1 | PT |
| 100 | OPBC 210112 | 1 1/4 | NPT |
| 100 | OPBC 210114 | 1 1/2 | NPT |
| 100 | OPBC 210120 | 2 | NPT |

MM – yellow, NPT- blue

WIRING ACCESSORIES

Wiring Duct



| QTY/ PACK | CAT. NOS | WXH (mm) | LENGHT (m) | COLOUR |
|--------------|-------------|-------------|---------------|--------|
| 100 | OPMD 0 | 25x25 | 1.7 | G |
| 225 | OPMD 0.5 | 15x25 | 1.7 | G |
| 60 | EPMD 1.5 | 33x45 | 1.7 | G |
| 40 | EPMD 5 | 45x65 | 1.7 | G |
| 34 | OPMD 6 | 72x64 | 1.7 | G |
| 100 | OPMD 0L | 25x25 | 2.0 | G |
| 225 | EPMD 0.5L | 15x25 | 2.0 | G |
| 80 | OPMD 1L | 25x45 | 2.0 | G |
| 80 | OPMD 1.2L | 33x33 | 2.0 | G |
| 60 | OPMD 1.5L | 33x45 | 2.0 | G |
| 44 | OPMD 2L | 45x45 | 2.0 | G |
| 56 | OPMD 2.2L | 50x50 | 2.0 | G |
| 36 | OPMD 2.5L | 65x45 | 2.0 | G |
| 44 | OPMD 3L | 33x65 | 2.0 | G |
| 60 | OPMD 4L | 25x65 | 2.0 | G |
| 40 | EPMD 5L | 45x65 | 2.0 | G |
| 40 | OPMD 5.5L | 60x60 | 2.0 | G |
| 36 | OPMD 5.7L | 65x65 | 2.0 | G |
| 34 | OPMD 6L | 72x64 | 2.0 | G |
| 42 | OPMD 6.5L | 33x100 | 2.0 | G |
| 30 | OPMD 6.7L | 50x100 | 2.0 | G |
| 24 | OPMD 7L | 70x100 | 2.0 | G |
| 24 | OPMD 7.5L | 100x75 | 2.0 | G |
| 18 | OPMD 8L | 100x100 | 2.0 | G |
| 16 | OPMD 10L | 150x75 | 2.0 | G |
| 12 | OPMD 12L | 150x100 | 2.0 | G |

Vinyl Wire End Cup



| QTY/ PACK | CAT. NOS | CABLE (mm) ² | COLOR |
|--------------|-------------|----------------------------|-------------|
| 100 | OPEC 1.25 | 1.5 | B/BL/GN/R/Y |
| 100 | OPEC 2 | 2.5 | B/BL/GN/R/Y |
| 100 | OPEC 3.5 | 4 | B/BL/GN/R/Y |
| 100 | OPEC 5.5 | 6 | B/BL/GN/R/Y |
| 100 | OPEC 8 | 10 | B/BL/GN/R/Y |
| 100 | OPEC 14 | 16 | B/BL/GN/R/Y |
| 100 | OPEC 22 | 25 & 35 | B/BL/GN/R/Y |
| 100 | OPEC 38 | 50 | B/BL/GN/R/Y |
| 100 | OPEC 60 | 70 | B/BL/GN/R/Y |
| 50 | OPEC 80 | 95 | B/BL/GN/R/Y |
| 50 | OPEC 100 | 120 | B/BL/GN/R/Y |
| 50 | OPEC 125 | 150 | B/BL/GN/R/Y |
| 50 | OPEC 150 | 185 | B/BL/GN/R/Y |
| 50 | OPEC 200 | 240 | B/BL/GN/R/Y |
| 50 | OPEC 250 | 300 | B/BL/GN/R/Y |
| 25 | OPEC 325 | 350 | B/BL/GN/R/Y |
| 25 | OPEC 400 | 400 | B/BL/GN/R/Y |
| 25 | OPEC 500 | 500 | B/BL/GN/R/Y |
| 25 | OPEC 630 | 630 | B/BL/GN/R/Y |

WIRING ACCESSORIES

Nylon Cable Tie



| QTY/ PACK | CAT. NOS | LENGTH INCH | LENGTH (mm) | WIDTH (mm) | MAX. BUNDLE DIA (m) | COLOUR |
|--------------|---------------|--------------------------------|----------------|---------------|------------------------|--------|
| 1000 | OPCT 100/25 | 4 | 100 | 2.5 | 25 | W/B |
| 1000 | OPCT 140/36 | 5 ¹ / ₂ | 140 | 3.6 | 35 | W/B |
| 1000 | OPCT 200/36 | 8 | 200 | 3.6 | 55 | W/B |
| 1000 | OPCT 200/48 | 8 | 200 | 4.8 | 55 | W/B |
| 1000 | OPCT 250/48 | 10 | 250 | 4.8 | 74 | W/B |
| 1000 | OPCT 300/48 | 12 | 300 | 4.8 | 85 | W/B |
| 1000 | OPCT 300/76 | 12 | 300 | 7.6 | 85 | W/B |
| 100 | OPCT 370/48 | 14 ¹ / ₂ | 370 | 4.8 | 102 | W/B |
| 100 | OPCT 370/76 | 14 ¹ / ₂ | 370 | 7.6 | 102 | W/B |
| 100 | OPCT 430/48 | 17 | 430 | 4.8 | 125 | W/B |
| 100 | OPCT 430/90 | 17 | 430 | 9.0 | 125 | W/B |
| 100 | OPCT 530/90 | 21 | 530 | 9.0 | 150 | W/B |
| 100 | OPCT 720/90 | 28 | 720 | 9.0 | 185 | W/B |
| 100 | OPCT 790/90 | 31 | 790 | 9.0 | 220 | W/B |
| 100 | OPCT 830/90 | 32 | 830 | 9.0 | 230 | W/B |
| 100 | OPCT 880/127 | 34 ¹ / ₂ | 880 | 12.7 | 260 | W/B |
| 100 | OPCT 1030/127 | 40 ¹ / ₂ | 1030 | 12.7 | 310 | W/B |

Cable Tie Mount



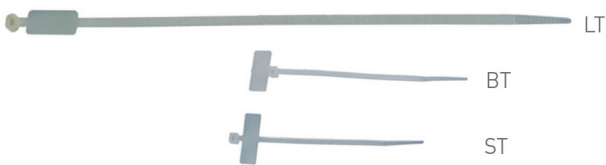
| QTY/ PACK | CAT. NOS | W x L (mm) | COLOUR |
|--------------|-------------|---------------|--------|
| 500 | OPCTM19 | 19 x 19 | W/B |
| 500 | OPCTM28 | 28 x 28 | W/B |

Switch Board Lining



| QTY/ PACK | CAT. NOS | TYPE | LENGTH (m) | COLOR |
|--------------|--------------|--------------|---------------|-------|
| 1 | OPSL-122S153 | Soft | 153 | B |
| 1 | OPSL-122H183 | Hard | 183 | B |
| 1 | OPSL-122S183 | Soft | 183 | B |
| 1 | OPSL-125W153 | Weatherproof | 153 | B |

Nylon Cable Marker Tie



| QTY/ PACK | CAT. NOS | LENGTH INCH | LENGTH (mm) | WIDTH (mm) | MAX. BUNDLE DIA (mm) |
|--------------|-----------------|-------------------------------|----------------|---------------|-------------------------|
| 1000 | OPCMT 100/25 ST | 4 | 110 | 2.5 | 19 |
| 1000 | OPCMT 110/25 BT | 4 ¹ / ₂ | 110 | 2.5 | 19 |
| 1000 | OPCMT 200/25 ST | 8 | 200 | 2.5 | 50 |
| 1000 | OPCMT 200/48 LT | 8 | 200 | 4.8 | 50 |
| 1000 | OPCMT 210/25 BT | 8 ¹ / ₂ | 210 | 2.5 | 50 |
| 1000 | OPCMT 300/48 LT | 12 | 300 | 4.8 | 75 |

Spiral Band



| QTY/ PACK | CAT. NO | WRAPPING RANGE (mm) | COLOUR |
|--------------|------------|------------------------|--------|
| 60 | EPSB 06 | 10-50 | W/B |
| 60 | EPSB 08 | 15-60 | W/B |
| 60 | EPSB 10 | 20-60 | W/B |
| 60 | EPSB 12 | 20-65 | W/B |
| 50 | EPSB 15 | 20-70 | W/B |
| 30 | EPSB 19 | 25-100 | W/B |
| 20 | EPSB 24 | 30-130 | W/B |

Length : 10m

Copper Busbar Support



| QTY/ PACK | CAT. NOS | SIZE (mm) |
|--------------|-------------|--------------|
| 250 | OPSM 25-M6 | 25 x M6 |
| 100 | OPSM 35-M8 | 35 x M8 |
| 100 | OPSM 45-M8 | 45 x M8 |
| 50 | OPSM 50-M8 | 50 x M8 |
| 25 | OPSM 76-M10 | 76 x M10 |

Color = W-White, G-Grey, B-Black

WIRING ACCESSORIES

EC Type Cable Markers



| COIL | CAT. NOS | MARKING | DIA-RANGE (mm) |
|------|----------|---------------------|----------------|
| 1000 | OPCMEC1 | 0-9 A-Z + - / | 3.0 - 4.2 |

FM Type Cable Marker



| COIL | CAT. NOS | MARKING | CABLE DIA-mm |
|------|----------|-----------------------|--------------|
| 500 | OPCMFM | 0-9 A - Z + - / | 3.5 - 7.0 |

Hot Marker Tubing



| QTY/ PACK | CAT. NOS | ROLL (m) | DIAMETER (mm) | COLOUR |
|-----------|------------|----------|---------------|--------|
| 1 | OPHMT 2020 | 200 | 2.0 | W |
| 1 | OPHMT 2520 | 200 | 2.5 | W |
| 1 | OPHMT 3020 | 200 | 3.0 | W |
| 1 | OPHMT 3220 | 200 | 3.2 | W/Y |
| 1 | OPHMT 3520 | 200 | 3.5 | W |
| 1 | OPHMT 3620 | 200 | 3.6 | W |
| 1 | OPHMT 4020 | 200 | 4.0 | W |
| 1 | OPHMT 4220 | 200 | 4.2 | W |
| 1 | OPHMT 4520 | 200 | 4.5 | W |
| 1 | OPHMT 5020 | 200 | 5.0 | W |
| 1 | OPHMT 5520 | 200 | 5.5 | W |
| 1 | OPHMT 6020 | 200 | 6.0 | W |
| 1 | OPHMT 7010 | 100 | 7.0 | W |
| 1 | OPHMT 8010 | 100 | 8.0 | W |
| 1 | OPHMT 1010 | 100 | 10.0 | W |

* Made to order: Red, Yellow, Green, Blue

Fm Type Marker Strip



| QTY/ PACK | CAT. NOS | DIGIT | DIAMETER WxL (mm) | COLOR |
|-----------|----------|-------|-------------------|-------|
| 100 | IPMS-65 | 9 | 9x65 | B |
| 100 | IPMS-70 | 10 | 9x70 | B |
| 100 | IPMS-100 | 16 | 9x100 | B |
| 100 | IPMS-110 | 18 | 9x110 | B |
| 100 | IPMS-135 | 23 | 9x135 | B |

Hole Snap Bush & Hole Plug

PHP



| *Hole Plug | | | | |
|------------|----------|--------------------|--------|--|
| QTY/ PACK | CAT. NOS | MOUNTING HOLE (mm) | COLOUR | |
| 100 | OPHP-8 | 8 | B | |
| 100 | OPHP-10 | 9.5 | B | |
| 100 | OPHP-13 | 13.0 | B | |
| 100 | OPHP-16 | 16.0 | B | |
| 100 | OPHP-19 | 19.0 | B | |
| 100 | OPHP-22 | 22.2 | B | |
| 100 | OPHP-25 | 25.5 | B | |
| 100 | OPHP-30 | 30.5 | B | |

PSB



| *Hole Snap Bush | | | | |
|-----------------|----------|--------------------|--------|--|
| QTY/ PACK | CAT. NOS | MOUNTING HOLE (mm) | COLOUR | |
| 100 | OPSB-8 | 8 | B | |
| 100 | OPSB-10 | 9.5 | B | |
| 100 | OPSB-13 | 13.0 | B | |
| 100 | OPSB-16 | 16.0 | B | |
| 100 | OPSB-19 | 19.0 | B | |
| 100 | OPSB-22 | 22.0 | B | |
| 100 | OPSB-26 | 25.4 | B | |
| 100 | OPSB-30 | 30.5 | B | |

Soft Hole Plug



| QTY/ PACK | CAT. NOS | LxHxT (mm) | COLOR |
|-----------|----------|---------------|-------|
| 100 | IPHP 56 | 56 x 10 x 2.5 | B |
| 100 | IPHP 96 | 96 x 10 x 2.5 | B |

Color = B-Black, W-White, Y-Yellow