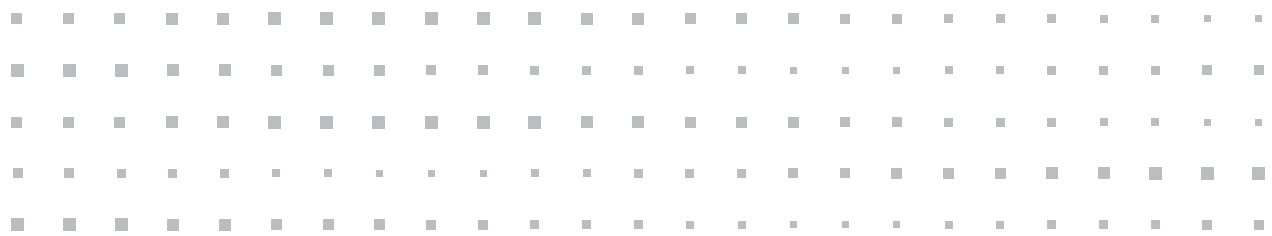




POWERED FOR EXCELLENCE

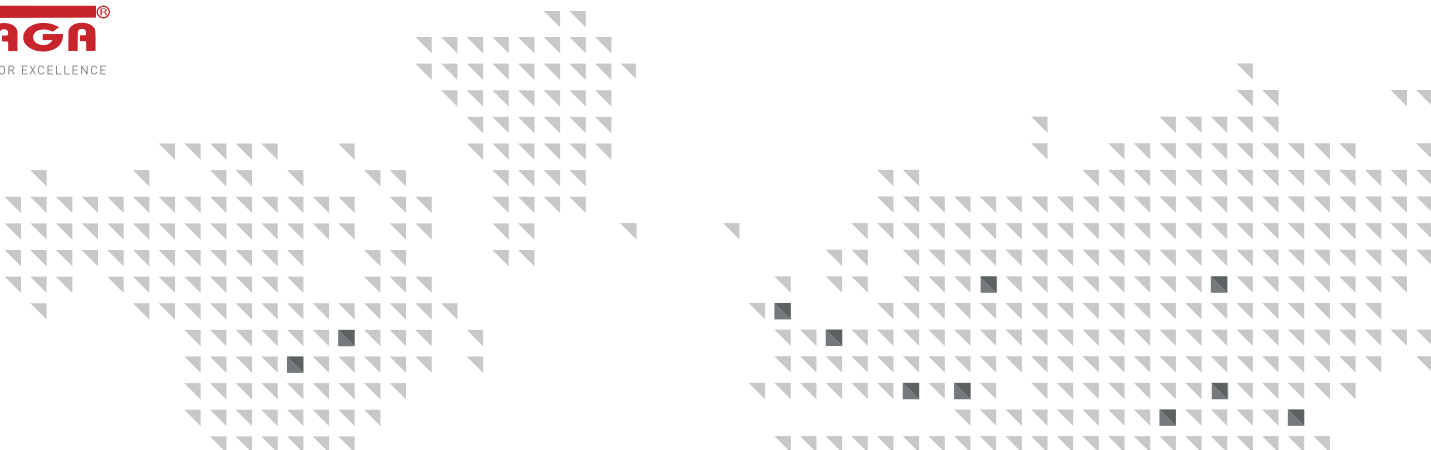
HEAVY DUTY



CATALOGUE
PAGES
INSIDE
→

THE GLOBAL SPECIALIST
IN ELECTRICAL AND DIGITAL BUILDING INFRASTRUCTURES



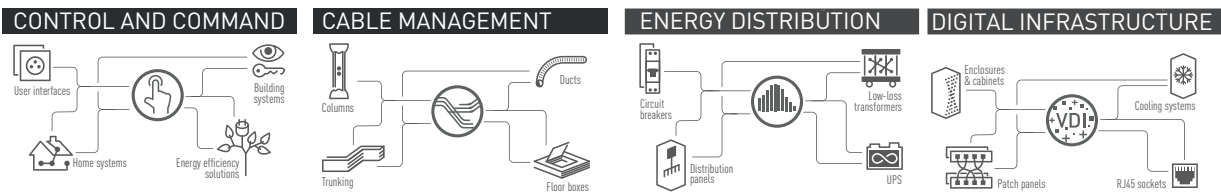


THE LEGRAND GROUP

A GLOBAL PLAYER

Legrand is the global specialist in electrical and digital building infrastructures. The group offers a comprehensive range of solution and services tailored to residential, commercial and industrial applications. The scope of its offering and its leading positions make Legrand a worldwide benchmark.

4 KEY AREAS OF EXPERTISE



TURNOVER
NEARLY
€6.6 BILLION
IN TOTAL SALES IN
2019

MORE THAN
36,000 EMPLOYEES

INNOVATION
**4.8% OF 2018
SALES
INVESTED
IN R&D**

A WIDE CHOICE
OF SOLUTIONS
**OVER
230,000
CATALOGUE
ITEMS**

**80 PRODUCT
FAMILIES**
SALES IN MORE THAN
80 COUNTRIES



WHO WE ARE

TRUSTED BRAND OVER
30 YEARS

ISO CERTIFIED
ISO 9001:2015

Quality Management System

ISO 14001:2015

Environmental Management Systems

WORLD CLASS FACILITIES

ON EXTRUSION
& INJECTION

including tooling, testing and latest production technology such as compounding, on-line and off-line finishing, down-stream engineering and packaging

BUILD-UP AREA OF
85,000 SQFT
ON A 120,000 SQFT LANA

INTERNATIONAL PRESENCE OVER
13 COUNTRIES

LEGRAND MALAYSIA



MEGAPOWER LEGRAND

Megapower was established in 1990 to serve and provide quality PVC cable management system and wiring accessories. We started production of a variety of high quality unplasticised polyvinyl (uPVC) products in its state-of-the-art factory, located in Selangor, 25KM away from Kuala Lumpur, Malaysia.

In 2011, a joint venture between Megapower and Legrand was formed marking a new association between two well-known brands in the industry. The association of two companies provided a stronger base expertise of one-stop solutions to serve the construction and electrical utilities.

HD
Heavy Duty
442112

Mechanical Protection
for durability against
compression and Impact
forces compliances to
IEC 61386-21

CONDUIT TESTED

for Excellence



COMPRESSION TEST

Endurability of
compressive load over
1250N.



IMPACT TEST

Resilience to impact
forces over 2kg mass
of hammer with fall
height of 300mm



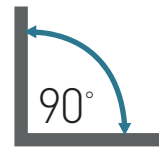
NON-FLAME PROPAGATION

flame extinguished
immediately after the
source of the flame
is removed.



ABLE TO FORM 90 DEGREE

with the aid
of bending spring

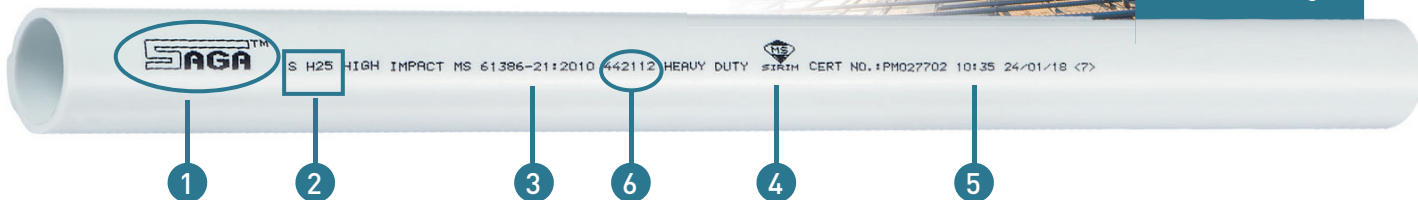


HIGH INTERNATIONAL QUALITY STANDARD

SAGA is independently tested to meet the intended design and wiring application as stipulated by international standard IEC 61386 - 21



Delivers Heavy Duty performance with time saving & lower installation costs for high rise building



- 1- Manufacturer and/or Brand name identification
- 2- Product Code
- 3- Compliance with International Standard IEC 61386-21
- 4- Sirim marking & certification number
- 5- Exact date and time of manufacture for easy tracking

- 6- 4- Compression rating (Rating 4 = Heavy Duty)
- 4- Impact rating (Rating 4 = Heavy Duty)
- 2- Min. Serving Temperature (Rating 2= -5 °C)
- 1- Max. Serving Temperature (Rating 1= +60 °C)
- 1- Bending resistance (Rating 1 = Rigid)
- 2- Electrical Characteristic (Rating 2= With electrical insulating characteristics)



ONE BRAND FOR ALL SOLUTIONS

Over 10 product ranges (conduits, fittings, trunking, MCB boxes etc) for over hundreds products. Your ultimate & ideal partner for all electrical solution where purchases & logistic are easily integrated.



ALWAYS MEET YOUR EXPECTATIONS

Selective range of Saga product' has been approved by Jabatan Kerja Raya (JKR), the primary technical agency of the Malaysian government on public projects. Besides that, stringent quality control and testing are employed for the International Electrotechnical Commission (IEC) 61386-21 Standard certification, which is the International Standard used for Conduit Systems for Cable Management. The manufacturing facility has also been awarded with ISO 9001:2015 Quality Management and ISO 14001:2015 Environmental Management Systems certifications.



PROVEN RELIABILITY FOR 30 YEARS OF SUCCESSFUL PROJECTS

The most recognized uPVC conduit solution provider in Malaysia that constantly strives for the best quality and services with many reputable successful project references.

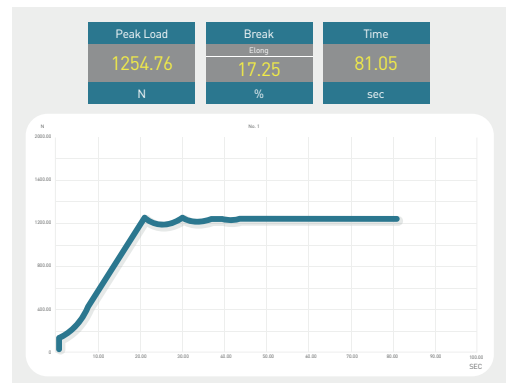


HEAVY-DUTY SAVE TIME ON INSTALLATION

Our product are tested under heavier conditions than the normative for an over performing quality that always guarantees time saving for you.



Impact Test



Compression Test

HIGH IMPACT HEAVY DUTY uPVC CONDUIT AND FITTINGS



High Impact Heavy Duty uPVC Conduit



| QTY/ PACK | CAT. NOS | SIZE (mm) | LENGTH (m) | COLOR |
|--------------|-------------|--------------|---------------|-------|
| 50 | ES H16 | 16 | 2.9 | W/O |
| 50 | ES H20 | 20 | 2.9 | W/O |
| 50 | ES H25 | 25 | 2.9 | W/O |
| 25 | ES H32 | 32 | 2.9 | W/O |
| 20 | ES H40 | 40 | 2.9 | W/O |
| 15 | ES H50 | 50 | 2.9 | W/O |

Terminal One Way Box



| QTY/ PACK | CAT. NOS | SIZE (mm) | DIAMETER (mm) | COLOR |
|--------------|---------------|--------------|------------------|-------|
| 100 | ISCB 20-1 | 20 | 65 | W/O |
| 100 | ISCB 25-1 | 25 | 65 | W/O |
| 100 | ISCB 32-1 | 32 | 75 | W |
| 100 | * ISCB 20-1+N | 20 | 65 | W/O |
| 100 | * ISCB 25-1+N | 25 | 65 | W/O |

*with nut.

Intersection Four Way Box



| QTY/ PACK | CAT. NOS | SIZE (mm) | DIAMETER (mm) | COLOR |
|--------------|---------------|--------------|------------------|-------|
| 100 | ISCB 20-4 | 20 | 65 | W/O |
| 100 | ISCB 25-4 | 25 | 65 | W/O |
| 100 | ISCB 32-4 | 32 | 75 | W |
| 100 | * ISCB 20-4+N | 20 | 65 | W/O |
| 100 | * ISCB 25-4+N | 25 | 65 | W/O |

*with nut.

Through Two Way Box



| QTY/ PACK | CAT. NOS | SIZE (mm) | DIAMETER (mm) | COLOR |
|--------------|---------------|--------------|------------------|-------|
| 100 | ISCB 20-2 | 20 | 65 | W/O |
| 100 | ISCB 25-2 | 25 | 65 | W/O |
| 100 | ISCB 32-2 | 32 | 75 | W |
| 100 | * ISCB 20-2+N | 20 | 65 | W/O |
| 100 | * ISCB 25-2+N | 25 | 65 | W/O |

*with nut.

U, Y, H Way Box (Ø 65 mm)



| QTY/ PACK | CAT. NOS | SIZE (mm) | COLOR |
|--------------|-------------|--------------|-------|
| 100 | ISCB 20-U | 20 | W |
| 100 | ISCB 20-Y | 20 | W |
| 100 | ISCB 20-H | 20 | W |

Angle Two Way Box



| QTY/ PACK | CAT. NOS | SIZE (mm) | DIAMETER (mm) | COLOR |
|--------------|----------------|--------------|------------------|-------|
| 100 | ISCB 20-2A | 20 | 65 | W/O |
| 100 | ISCB 25-2A | 25 | 65 | W/O |
| 100 | ISCB 32-2A | 32 | 75 | W |
| 100 | * ISCB 20-2A+N | 20 | 65 | W/O |
| 100 | * ISCB 25-2A+N | 25 | 65 | W/O |

*with nut.

Lid Cover (Screw Type) (Ø 65 mm)



| QTY/ PACK | CAT. NOS | SIZE (mm) | COLOR |
|--------------|-------------|--------------|-------|
| 100 | ISLC | 20&25 | W |

Tee Three Way Box



| QTY/ PACK | CAT. NOS | SIZE (mm) | DIAMETER (mm) | COLOR |
|--------------|---------------|--------------|------------------|-------|
| 100 | ISCB 20-3 | 20 | 65 | W/O |
| 100 | ISCB 25-3 | 25 | 65 | W/O |
| 100 | ISCB 32-3 | 32 | 75 | W |
| 100 | * ISCB 20-3+N | 20 | 65 | W/O |
| 100 | * ISCB 25-3+N | 25 | 65 | W/O |

*with nut.

Protector Cover (Clip Type)



| QTY/ PACK | CAT. NOS | SIZE (mm) | DIAMETER (mm) | COLOR |
|--------------|-------------|--------------|------------------|-------|
| 100 | ISPC | 20&25 | 65 | W/O |
| 100 | ISPC 32 | 32 | 75 | W |

FITTINGS

Inspection Tee



| QTY/ PACK | CAT. NOS | SIZE (mm) | COLOR |
|--------------|-------------|--------------|-------|
| 100 | ISIT 20 | 20 | W/O |
| 100 | ISIT 25 | 25 | W/O |

Coupling



| QTY/ PACK | CAT. NOS. | SIZE (mm) | COLOR |
|--------------|--------------|--------------|-------|
| 100 | ISC 20 | 20 | W/O |
| 100 | ISC 25 | 25 | W/O |
| 100 | ISC 32 | 32 | W |
| 100 | ISC 40 | 40 | W |
| 100 | ISC 50 | 50 | W |

Inspection Bend



| QTY/ PACK | CAT. NOS | SIZE (mm) | COLOR |
|--------------|-------------|--------------|-------|
| 100 | ISIB 20 | 20 | W/O |
| 100 | ISIB 25 | 25 | W/O |

Female Adaptor



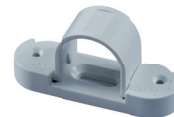
| QTY/ PACK | CAT. NOS | SIZE (mm) | COLOR |
|--------------|-------------|--------------|-------|
| 100 | ISFA 20 | 20 | W/O |
| 100 | ISFA 25 | 25 | W/O |
| 100 | OSFA 32 | 32 | W |

Inspection Elbow



| QTY/ PACK | CAT. NOS | SIZE (mm) | COLOR |
|--------------|-------------|--------------|-------|
| 100 | ISIE 20 | 20 | W/O |
| 100 | ISIE 25 | 25 | W/O |

Bar Saddle



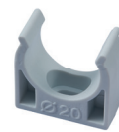
| QTY/ PACK | CAT. NOS | SIZE (mm) | COLOR |
|--------------|-------------|--------------|-------|
| 100 | ISBS 20 | 20 | W/O |
| 100 | ISBS 25 | 25 | W/O |
| 100 | OSBS 32 | 32 | W |

Solid Bend



| QTY/ PACK | CAT. NOS | SIZE (mm) | COLOR |
|--------------|-------------|--------------|-------|
| 100 | ESSB 32 | 32 | W |
| 100 | ESSB 40 | 40 | W |
| 100 | ESSB 50 | 50 | W |

Spring Clip Saddle



| QTY/ PACK | CAT. NOS | SIZE (mm) | COLOR |
|--------------|-------------|--------------|-------|
| 100 | ISSCS 20 | 20 | W |
| 100 | ISSCS 25 | 25 | W |
| 100 | ISSCS 32 | 32 | W |

Extension Ring (Ø 65 mm)



| QTY/ PACK | CAT. NOS | HEIGHT (mm) | COLOR |
|--------------|-------------|----------------|-------|
| 100 | ISER-L | 25 | W |
| 100 | ISER-H | 38 | W |
| 100 | ISER-H50 | 50 | W |

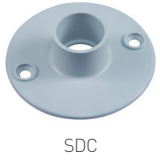
Plain Saddle



| QTY/ PACK | CAT. NOS | SIZE (mm) | COLOR |
|--------------|-------------|--------------|-------|
| 100 | ISPS 20 | 20 | W |
| 100 | ISPS 25 | 25 | W |

FITTINGS

Dome Cover



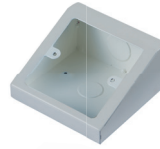
SDC



SDC-C

| QTY/ PACK | CAT. NOS | SIZE (mm) | DIAMETER (mm) | COLOR |
|--------------|-------------|--------------|------------------|-------|
| 100 | ISDC 20 | 20 | 65 | W |
| 100 | ISDC 25 | 25 | 65 | W |
| 100 | ISDC-C 20 | 20 | 65 | W/O |
| 100 | ISDC-C 25 | 25 | 65 | W/O |

Angle Floor Box (Metal)



| QTY/ PACK | CAT. NOS | SIZE (INCH) | TYPE | COLOR |
|--------------|-------------|----------------|----------|-------|
| 100 | MSAFB-1M | 3"x3" | 1 Gang | W |
| 50 | MSAFB-2M | 3"x6" | 2 Gang | W |
| 50 | MSAFB-3M | 3"x7" | 2x1 Gang | W |

Reducer



| QTY/ PACK | CAT. NOS | SIZE (mm) | COLOR |
|--------------|-------------|--------------|-------|
| 100 | ISR 20 | 25-20 | W/O |
| 100 | ISR 32 | 32-25 | W |

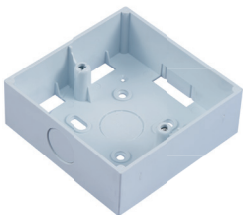
Angle Floor Box (Polycarbonate)



| QTY/ PACK | CAT. NOS | SIZE (INCH) | TYPE | COLOR |
|--------------|-------------|----------------|----------|-------|
| 100 | *ISAFB-1 | 3"x3" | 1 Gang | W |
| 50 | *ISAFB-2 | 3"x6" | 2 Gang | W |
| 50 | *ISAFB-3 | 3"x7" | 2x1 Gang | W |

* Unbreakable Polycarbonate Version available upon request

Surface Mounting Box



| QTY/ PACK | CAT. NOS | SIZE (INCH) | TYPE | COLOR |
|--------------|-------------|----------------|---------|-------|
| 100 | ISSMB-1 | 3"x3" | 1 Gang | W |
| 50 | ISSMB-2 | 3"x6" | 2 Gang | W |
| 50 | ISSMB-3 | 3"x7" | 2x1Gang | W |
| 40 | ISSMB-4 | 3"x10" | 3x1Gang | W |
| 30 | ISSMB-5 | 3"x13" | 4x1Gang | W |

Blank Plate



| QTY/ PACK | CAT. NOS | SIZE (INCH) | TYPE | COLOR |
|--------------|-------------|----------------|--------|-------|
| 100 | *ISBP-1-HD | 3"x3" | 1 Gang | W |
| 100 | *ISBP-2-HD | 3"x6" | 2 Gang | W |

* HD = Heavy Duty

Partition Box



| QTY/ PACK | CAT. NOS | SIZE (INCH) | TYPE | COLOR |
|--------------|-------------|----------------|---------|-------|
| 100 | ISPB-1 | 3"x3" | 1 Gang | W |
| 50 | ISPB-2 | 3"x6" | 2 Gang | W |
| 50 | ISPB-3 | 3"x7" | 2x1Gang | W |

Concealed Box Cover



| QTY/ PACK | CAT. NOS | SIZE (INCH) | TYPE | COLOR |
|--------------|-------------|----------------|--------|-------|
| 100 | ISKOBC-1 | 3"x3" | 1 Gang | W |
| 100 | ISKOBC-2 | 3"x6" | 2 Gang | W |



Color = W-White, O-Orange

FITTINGS

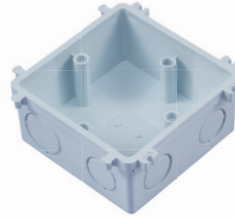
Concealed Box



| QTY/ PACK | CAT. NOS | SIZE (INCH) | TYPE | COLOR |
|--------------|-------------|----------------|---------|-------|
| 100 | ISKOB-1 | 3"x3" | 1 Gang | W/O |
| 50 | ISKOB-2 | 3"x6" | 2 Gang | W |
| 50 | ISKOB-3 | 3"x7" | 2x1Gang | W/O |
| 100 | *ISKOB-1A+N | 3"x3" | 1 Gang | W |
| 50 | *ISKOB-2+N | 3"x6" | 2 Gang | W |

* with nut

Connectable Concealed Box



| QTY/ PACK | CAT. NOS | SIZE (INCH) | TYPE | COLOR |
|--------------|-----------------------|----------------|-------|-------|
| 100 | ISKOB-1C | 3"x3" | 1Gang | W |
| 100 | ISKOB-1C-H (50 mm) | 3"x3" | 1Gang | W |

Adjustable Concealed Box



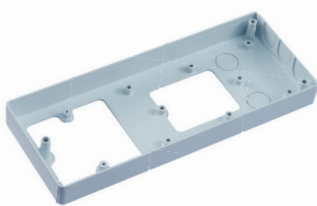
| QTY/ PACK | CAT. NOS | SIZE (INCH) | TYPE | COLOR |
|--------------|-------------|----------------|----------|-------|
| 100 | ISKOB-1A | 3"x3" | 1 Gang | W |
| 50 | ISKOB-3A | 3"x7" | 2x1 Gang | W |

Vertical Concealed Box



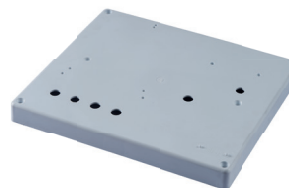
| QTY/ PACK | CAT. NOS | SIZE (INCH) | TYPE | COLOR |
|--------------|-------------|----------------|--------|-------|
| 100 | ISKOB-1V | 3"x3" | 1 Gang | W |

Fan Regulator Board



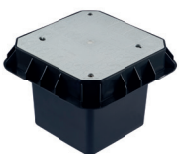
| QTY/ PACK | CAT. NOS | WXH (mm) | COLOR |
|--------------|-------------|-------------|-------|
| 50 | ISFRB 410 | 97 x 225 | W |

Meter Block



| QTY/ PACK | CAT. NOS | WxH (mm) | COLOR |
|--------------|-------------|-------------|-------|
| 25 | ISMB 910 | 250 x 225 | W |

Heavy Duty Earth Chamber



ISEC-HD

| QTY/ PACK | CAT. NOS | LxWxH (mm) | COLOR |
|--------------|-------------|----------------|-------|
| 1 | *ISEC-HD | 245 x 245 x210 | B |

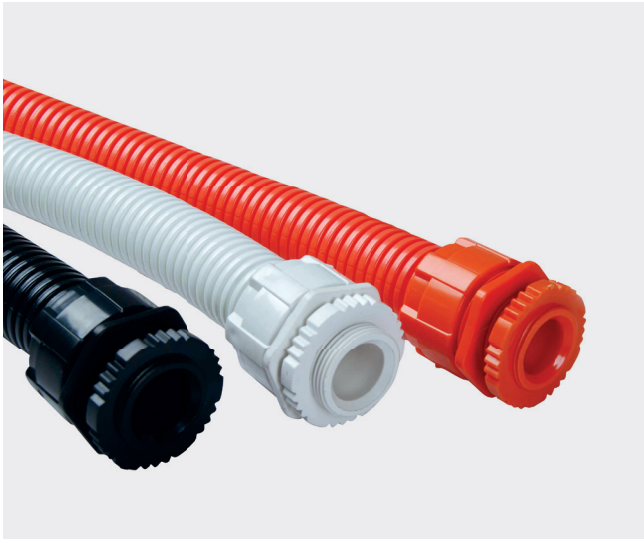
*HD= Heavy Duty
*Able To Withstand 8 Tons Loading

Earth Tape Clip



| QTY/ PACK | CAT. NOS | SIZE (mm) | COLOR |
|--------------|-------------|--------------|-------|
| 100 | ISETC | 25x3 | BR |

CORRUGATED CONDUIT AND FITTINGS



Corrugated Conduits



| QTY/ PACK | CAT. NOS | SIZE (mm) | LENGTH (m) | COLOR |
|--------------|-------------|--------------|---------------|-------|
| 7 | ESCC 16 | 16 | 50 | W/O/B |
| 3 | ESCC 32 | 32 | 25 | W/O/B |
| 3 | ESCC 40 | 40 | 25 | W/O/B |
| 1 | ESCC 50 | 50 | 25 | W/O/B |

Corrugated Conduits (Non flame propagation)



| QTY/ PACK | CAT. NOS | SIZE (mm) | LENGTH (m) | COLOR |
|--------------|-------------|--------------|---------------|-------|
| 7 | ESCC 20 | 20 | 50 | W/O/B |
| 7 | ESCC 25 | 25 | 50 | W/O/B |

Corrugated Conduit Adaptor (Clip Type)

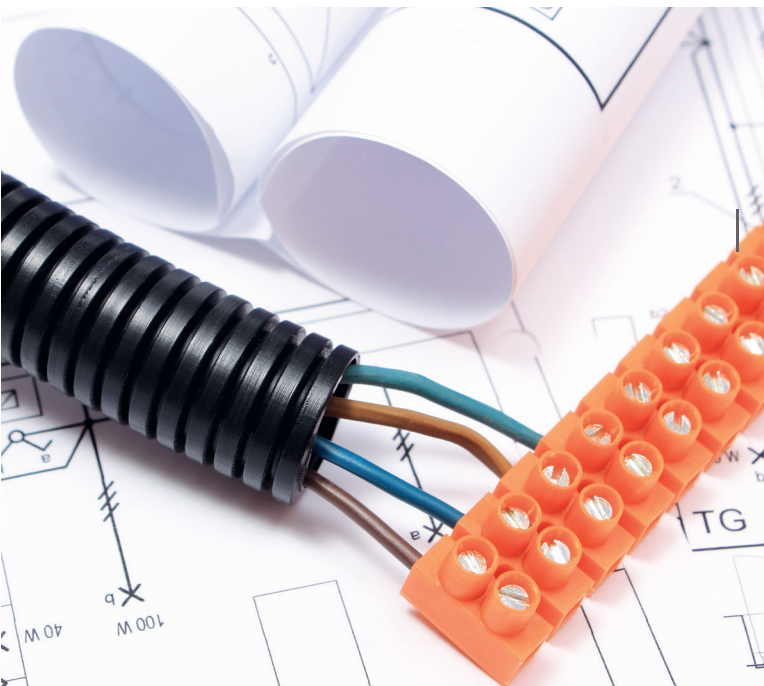


| QTY/ PACK | CAT. NOS | SIZE (mm) | COLOR |
|--------------|-------------|--------------|-------|
| 100 | ISCCA-C 20 | 20 | W/O/B |
| 100 | ISCCA-C 25 | 25 | W/O/B |

Corrugated Conduit Adaptor (Screw Type)



| QTY/ PACK | CAT. NOS | SIZE (mm) | COLOR |
|--------------|-------------|--------------|-------|
| 100 | ISCCA 20 | 20 | W/O/B |
| 100 | ISCCA 25 | 25 | W/O/B |



Discover more of SagaGreentech for complete lead free Heavy Duty uPVC conduits solution.



WEATHERPROOF ENCLOSURE BOX IP66 & JUNCTION BOX IP44

Weatherproof Enclosure & Junction Box IP44



- ABS thermoplastic
- IP66 Dust/weatherproof
- High impact strength
- Temperature range from -5°C ~ +70°C
- Chemical resistance to aqueous acids, alkalis, seawater, concentrated phosphoric & hydrochloric acid
- Polycarbonate version available upon request
- Transparent Cover are made of Unbreakable Polycarbonate Material
- Other color available upon MTO request
- * ISJB 331 - Junction Box IP44

| QTY/ PACK | CAT. NOS | LxW (INCH) | LxWxH (mm) | COLOR |
|--------------|-------------|---------------|---------------|-------|
| 150 | ISEB 442 | 4x4 | 110 x110x60 | G/T |
| 90 | ISEB 444 | 4x4 | 110x110x110 | G/T |
| 72 | ISEB 643 | 6x4 | 155x115x80 | G/T |
| 50 | ISEB 644 | 6x4 | 155x115x110 | G/T |
| 42 | ISEB 863 | 8x6 | 215x150x80 | G/T |
| 30 | ISEB 864 | 8x6 | 215x150x110 | G/T |
| 36 | ISEB 883 | 8x8 | 215x215x80 | G/T |
| 28 | ISEB 884 | 8x8 | 215x215x110 | G/T |
| 20 | ISEB 1084 | 10x8 | 250x200x110 | G/T |
| 14 | ISEB 1086 | 10x8 | 250x200x160 | G/T |
| 12 | ISEB 1296 | 12x9 | 310x230x145 | G/T |
| 9 | ISEB 15127 | 15x12 | 390x310x180 | G/T |
| 4 | OSEB 18155 | 18x15 | 465x385x140 | G |
| *120 | ISJB 331 | 3x3 | 80x80x40 | G |

Index of protection Degrees of protection provided by enclosures for electrical equipment (IP code)

According to standards: IEC 60529, BS EN 60529 and NF EN 60529

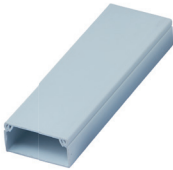
| 1 st digit: protection against solid foreign objects | | | 2 nd digit: protection against ingress of water | | | Additional letter: protection against access to hazardous parts | | |
|---|---|--|--|---|---|---|-------|---|
| IP | tests | protection | IP | tests | protection | IP | tests | protection |
| 0 | | No protection | 0 | | No protection | | | |
| 1 | | Protected against solid bodies larger than 50 mm | 1 | | Protected against vertically-falling drops of water (condensation) | A | | The back of the hand remains remote from dangerous parts |
| | | | 2 | | Protected against drops of water falling at up to 15° from the vertical | | | |
| 2 | | Protected against solid bodies larger than 12.5 mm | 3 | | Protected against drops of rain water at up to 60° from the vertical | B | | The dangerous parts can not be touched when introducing a finger |
| | | | 4 | | Protected against projections of water from all directions | | | |
| 3 | | Protected against solid bodies larger than 2.5 mm | 5 | | Protected against jets of water from all directions | C | | The dangerous parts can not be touched when introducing a tool (eg a screwdriver) |
| | | | 6 | | Protected against jets of water of similar force to heavy seas | | | |
| 4 | | Protected against solid bodies larger than 1 mm | 7 | | Protected against the effect of immersion | D | | The dangerous parts can not be touched when introducing a wire |
| 5 | Protected against dust (no harmful deposit) | 8 | | Protected against prolonged effects of immersion under pressure | | | | |
| 6 | Completely protected against dust | 9 9K ⁽¹⁾ | | Protected against high pressure and temperature water jets | | | | |

(1) In accordance to ISO 20653

Color = G-Grey, T-Transparent cover


MINI, MODULAR, ROUND & TELEPHONE TRUNKING

Mini Trunking

|  | QTY/ PACK | CAT. NOS | WxH (mm) | LENGTH (m) | COLOR |
|--|--------------|-------------|-------------|---------------|-------|
| | 160 | * ESMT 1020 | 20x10 | 1.83 | W |
| 120 | * ESMT 1327 | 27x13 | 1.83 | W | |
| 120 | * ESMT 1330 | 30x13 | 1.83 | W | |
| 80 | * ESMT 1640 | 40x16 | 1.83 | W | |
| 80 | * ESMT 2040 | 40x20 | 1.83 | W | |
| 60 | * ESMT 1650 | 50x16 | 1.83 | W | |


* Length: 2m available upon request

Modular Trunking

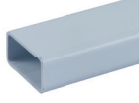
|  | QTY/ PACK | CAT. NOS | WxH (mm) | LENGTH (m) | COLOR |
|---|--------------|-------------|-------------|---------------|-------|
| | 40 | * ESMT 3250 | 50x32 | 1.83 | W |
| 25 | * ESMT 5550 | 50x55 | 1.83 | W | |
| 20 | * ESMT 5575 | 75x55 | 1.83 | W | |
| 15 | * ESMT 55100 | 100x55 | 1.83 | W | |
| 12 | * ESMT 75100 | 100x75 | 1.83 | W | |
| 2 | ESMT 100100 | 100x100 | 2.00 | W | |
| 2 | ESMT 100150 | 150x100 | 2.00 | W | |
| 2 | OSMT 55200 | 200x55 | 2.00 | W | |
| 2 | OSMT 100200 | 200x100 | 2.00 | W | |

* Length: 2m available upon request

2 Compartment Trunking


|  | QTY/ PACK | CAT. NOS | WxH (mm) | LENGTH (m) | COLOR |
|--|-----------------|-----------------|-------------|---------------|-------|
| | 10 | OSMT 2C 2040-2M | 40x20 | 2.00 | W |
| 10 | OSMT 2C 2060-2M | 60x20 | 2.00 | W | |
| 10 | OSMT 2C 3280-2M | 80x32 | 2.00 | W | |

Rectangular Telephone Trunking - 38mm Height

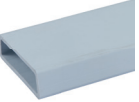
|  | QTY/ PACK | CAT. NOS | DUTY (m) | LENGTH (m) | WxH (mm) | THICKNESS (mm) | COLOR |
|---|----------------|----------------|-------------|---------------|-------------|-------------------|-------|
| | 10 | ESUFD 232H VHD | 2.9 | 50x38 | 3.2 | W | |
| 10 | ESUFD 332H VHD | 2.9 | 75x38 | 3.2 | W | | |
| 10 | ESUFD 432H VHD | 2.9 | 100x38 | 3.2 | W | | |

VHD: Very heavy duty

3 Compartment Trunking


|  | QTY/ PACK | CAT. NOS | WxH (mm) | LENGTH (m) | COLOR |
|--|--------------|---------------|-------------|---------------|-------|
| | 10 | OSMT 3C 40100 | 100x40 | 2.00 | W |

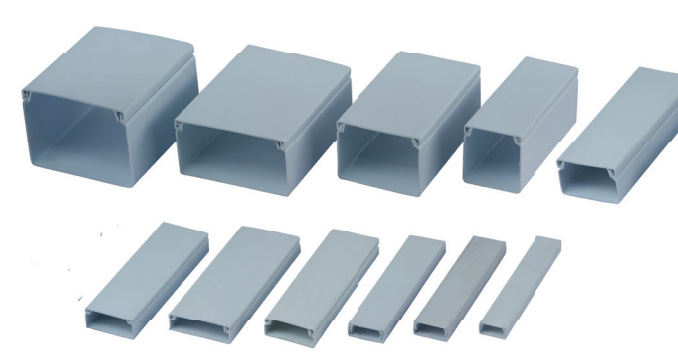
Trapezoidal Telephone Trunking

|  | QTY/ PACK | CAT. NOS | DUTY (m) | LENGTH (m) | WXH (mm) | THICKNESS (mm) | COLOR |
|---|----------------|----------------|-------------|---------------|-------------|-------------------|-------|
| | 10 | ESUFDT 225 VHD | 2.9 | 50x25 | 2.5 | W | |
| 10 | ESUFDT 332 VHD | 2.9 | 75x25 | 3.2 | W | | |
| 10 | ESUFDT 432 VHD | 2.9 | 100x25 | 3.2 | W | | |

VHD: Very heavy duty

Round Duct

|  | QTY/ PACK | CAT. NOS | WxH (mm) | LENGTH (m) | COLOR |
|--|--------------|-------------|-------------|---------------|-------|
| | 10 | ESRD 30 | 30x8 | 2.00 | G |
| 10 | ESRD 50 | 50x13 | 2.00 | G | |
| 10 | ESRD 70 | 70x15 | 2.00 | G | |
| 2 | ESRD 90 | 90x22 | 2.00 | G | |
| 2 | ESRD 120 | 120x30 | 2.00 | G | |



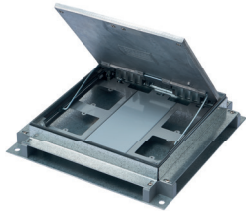
*Other color available upon MTO request

Color: W- White, G-Grey



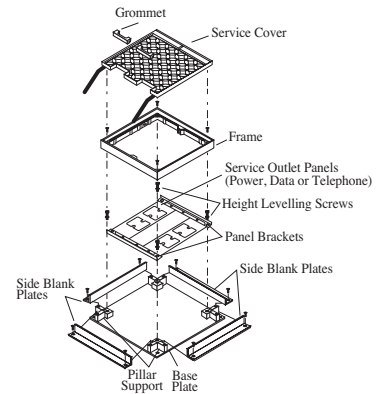
UNDERFLOOR SERVICE & JUNCTION BOX

UnderFloor Service box



| QTY/ PACK | CAT. NOS | SIZE LxWxH (mm) | NO. OF COMPART- MENT | MAX TRUNKING ENTRY (WxH) (mm) | COVER RECESS (mm) |
|--------------|-------------|-----------------------|----------------------------|--|-------------------------|
| 5 | MSSB6 250/A | 250x250x65 | 3 | 225x25 | 6 |
| 5 | MSSB9 250/A | 250x250x65 | 3 | 225x25 | 9 |
| 4 | MSSB9 300/A | 300x300x65 | 3 | 275x25 | 9 |

*Other loose accessories and sizes of vertical access box are available upon request

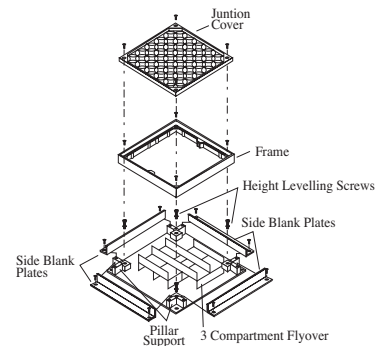


UnderFloor Junction box



| QTY/ PACK | CAT. NOS | LxWxH (mm) | NO. OF COMPART- MENT | MAX TRUNKING ENTRY (WxH) (mm) | COVER RECESS (mm) |
|--------------|-------------|---------------|----------------------------|--|-------------------------|
| 5 | MSJB6 250/A | 250x250x65 | 3 | 225x25 | 6 |
| 5 | MSJB9 250/A | 250x250x65 | 3 | 225x25 | 9 |
| 4 | MSJB9 300/A | 300x300x65 | 3 | 275x25 | 9 |

*Other loose accessories and sizes of vertical access box are available upon request

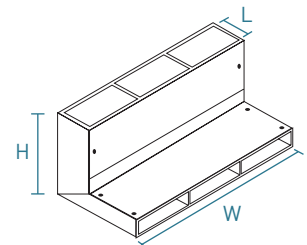


UnderFloor Vertical Access Box



| QTY/ PACK | CAT. NOS | LxWxH (mm) | NO. OF COMPART- MENT | MAX TRUNKING ENTRY (WxH) (mm) |
|--------------|-------------|---------------|----------------------------|--|
| 1 | MSVAB 100/1 | 50x100x150 | 1 | 100x25 |
| 1 | MSVAB 100/2 | 50x100x150 | 2 | 100x25 |
| 1 | MSVAB 225/3 | 50x225x150 | 3 | 225x25 |
| 1 | MSVAB 300/3 | 50x300x150 | 3 | 300x25 |

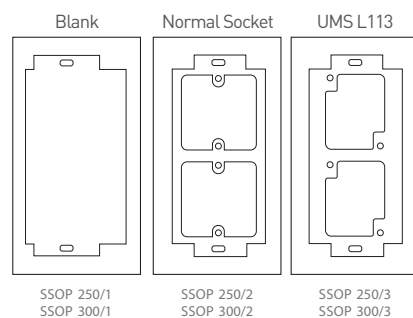
*Other loose accessories and sizes of vertical access box are available upon request



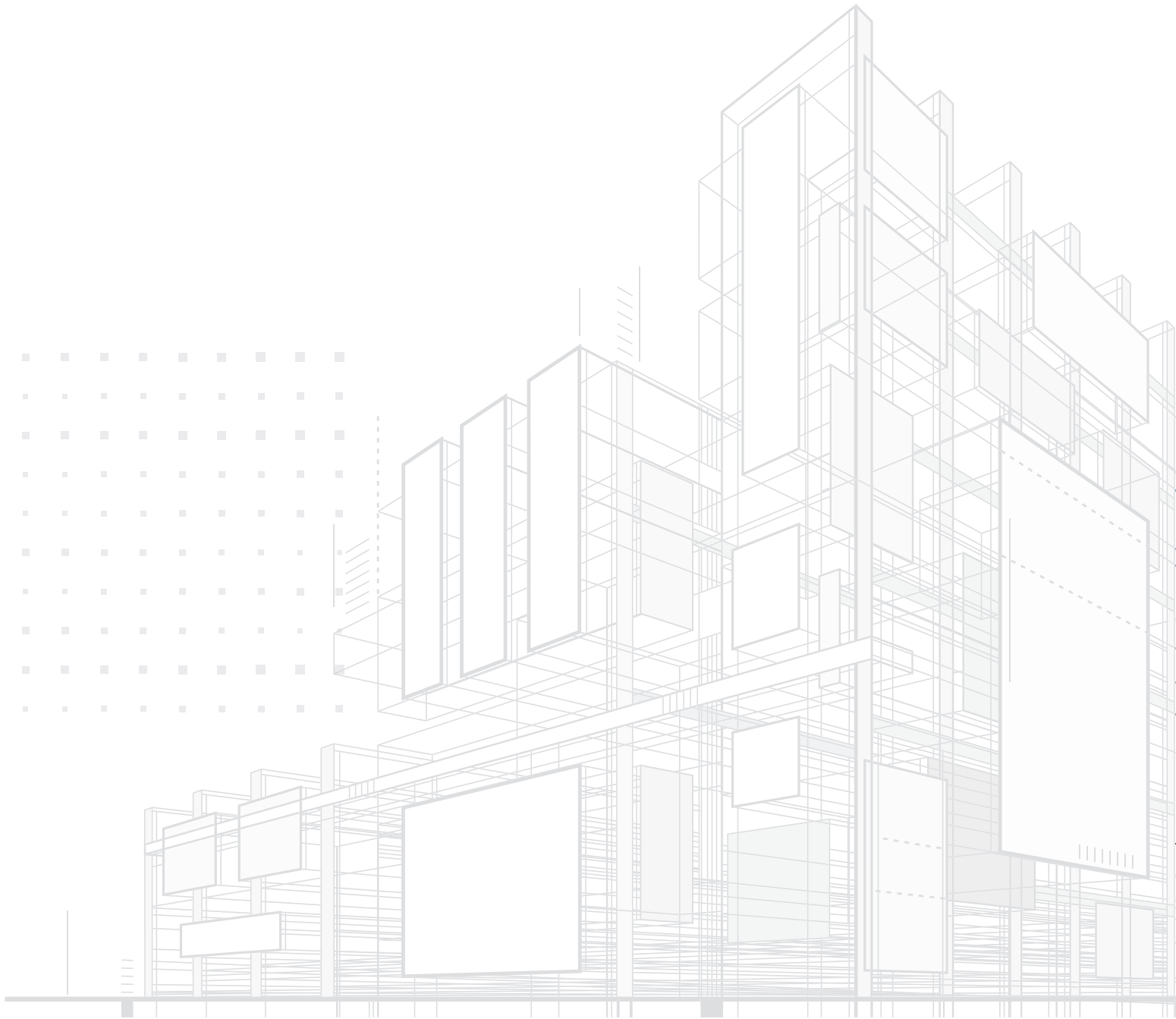
UnderFloor Switch Socket Outlet Plate (SSOP)



| QTY/ PACK | CAT. NOS | DESCRIPTION | SIZE (LxW) | SOC KET TYPE |
|--------------|-------------|-------------------------------|---------------|-----------------|
| 1 | MSSOP 250/1 | Blank Plate | 230x80 | Blank Plate |
| 1 | MSSOP 250/2 | 1 Gang Normal Switch Socket | 230x80 | Normal Socket |
| 1 | MSSOP 250/3 | 1 Gang UMS Mini Switch Socket | 230x80 | UMS L113 / MK |
| 1 | MSSOP 300/1 | Blank Plate | 280x90 | Blank Plate |
| 1 | MSSOP 300/2 | 1 Gang Normal Switch Socket | 280x90 | Normal Socket |



COVER TYPE: 3A- ALUMINIUM



MEGAPOWER LEGRAND (M) SDN BHD (544761-T)

Lot 1888, Jalan KPB 7,
Kawasan Perindustrian Balakong,
Bukit Belimbing,
43300 Seri Kembangan,
Selangor D.E, Malaysia.

Tel: (6) 03-8962 3333 (HL)

Fax: (6) 03-8962 3322 / 3388

E-mail :enquiries@megapowerlegrand.com.my

www.megapower.net.my

www.legrand.com.my

ZM-SC SG-V1