

LOWER ENERGY USE WITH JOVEN HEAT ELEVATOR

World's 1st

HEAT ELEVATOR™
ENERGY SAVING DEVICE



*Available for JSH Series With Heat Elevator (HE) Models only

What is JOVEN Heat Elevator™ (HE) Technology?

Heat Elevator (HE) technology is the world's first innovation that uses patent pending magnetic device that accelerate the convective heat transfer and improve heat stratification in water. This magnetic device is uniquely designed to weaken the inter-molecular bonding energy and accelerate the movement of water molecules to improve heating efficiency.

- Joven Heat Elevator has been widely recognized by leading certification bodies in Singapore

ENERGY SAVING

Energy Efficiency Improvement

35L	50L	68L	91L
9%	27%	15%	17%

- HE technology saves an average of 20% energy in different capacities of storage water heater.

FAST HEATING

FASTER CUT-OUT

Saves **20% less time**

Example:

Conventional: 20 mins
With HE: 16 mins
4mins Faster Heating Time

- Enjoy faster heating with average of 20% faster cut-out time.

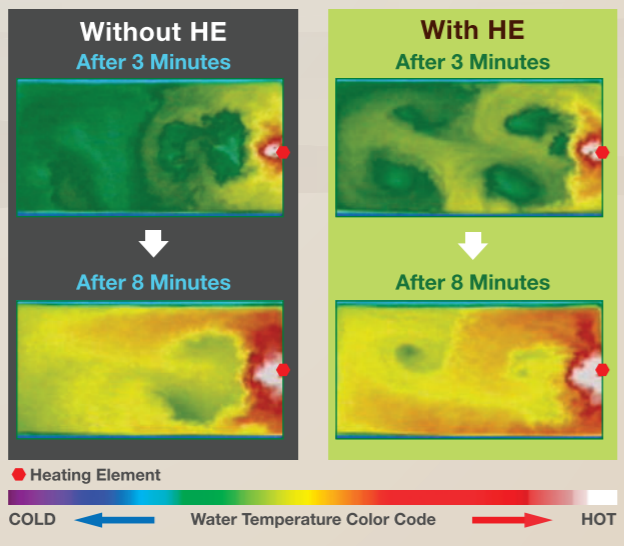
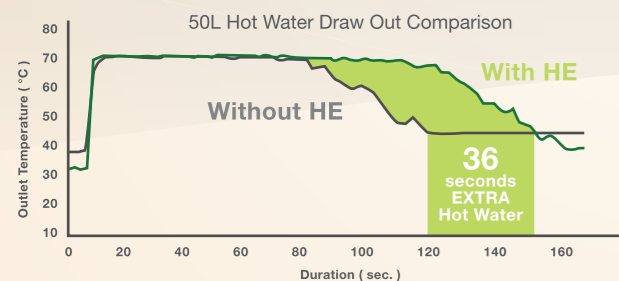
ELECTRICAL SAVING



- Enjoy lower electricity bills while contributing to a cleaner and greener environment.

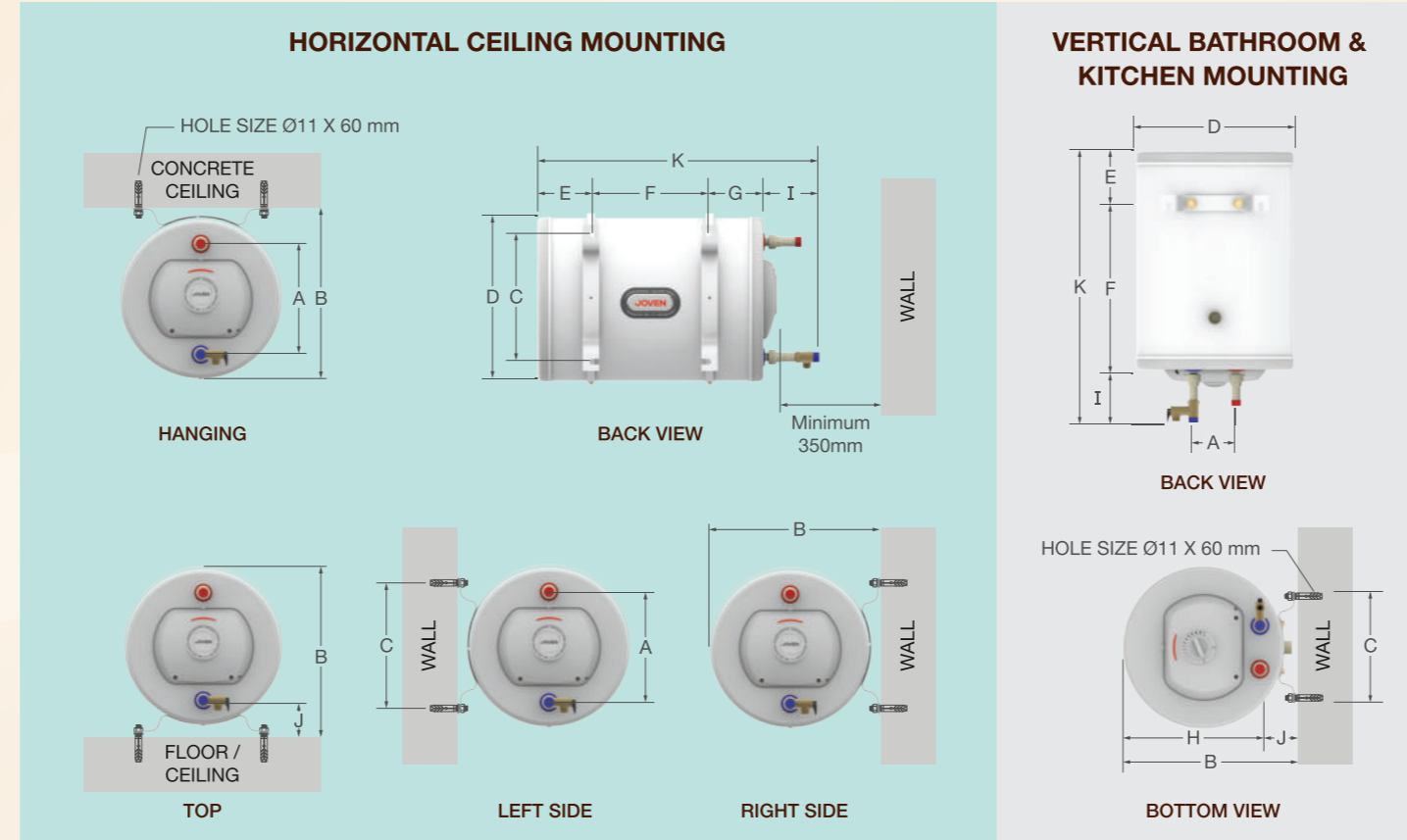
How Does It Work?

The comparative photos shows the effect of HE which cause more heat loops than conventional storage water heater. The heated water is spread wider across the heater tank, thus ensuring less heat trapped at the heating element, therefore prolong the heating element life and generate more hot water in the tank.



Note :
1. Test results are courtesy from TUV SUD PSB PTE LTD.
2. Test method is based on USA test guidelines (DOE 10 CFR Part 430) as specified by Singapore Standard (SS 530 : 2006)
3. Incoming water condition : temperature 14.4°C, pressure 2.75 bar & flow rate 11.4 Litre/min.
4. Result varies and are based on 25L to 91L capacities.
5. Available for JSH models only.

Installation Dimension



Model	Tank Capacity Litre (Imp. Gal)	Dimensions (mm)										Time Taken To Heat * (Minutes)	Approx. Wt. Kg (Empty/Full)	
		A	B	C	D	E	F	G	H	I	J			K
JSH 25	25 (5.5 Imp. Gals)	260	405	265	381	121	150	121	-	130	92	522	20	12 / 37
JSH 35	35 (7.7 Imp. Gals)	260	405	265	381	121	269	121	-	130	92	641	30	14 / 49
JSH 50	50 (11.0 Imp. Gals)	260	405	265	381	121	438	121	-	130	92	810	45	17 / 67
JSH 68	68 (15.0 Imp. Gals)	260	405	265	381	121	648	121	-	130	92	1020	60	20 / 88
JSH 91	91 (20.0 Imp. Gals)	260	405	265	381	121	914	121	-	130	92	1286	80	25 / 116
JSV 25	25 (5.5 Imp. Gals)	100	393	217	372	121	271	-	316	130	77	522	20	12 / 37
JSV 35	35 (7.7 Imp. Gals)	100	393	217	372	121	390	-	316	130	77	641	30	14 / 49
JSV 50	50 (11.0 Imp. Gals)	100	393	217	372	121	559	-	316	130	77	810	45	17 / 67

* Approximate time taken to heat up to 70°C. Inlet water temperature at 27°C. (3kW / 240V)

SOLE DISTRIBUTOR FOR MALAYSIA
JOVEN MARKETING SDN. BHD. (1956796-V)
Lot 2829, Jalan Sungai Kelkati 32/148, Off Jalan Sri Gambut, Seksyen 32, 40460 Shah Alam, Selangor Darul Ehsan, Malaysia.
Tel : +603 5162 6633 (Hunting Line)
Fax : +603 5162 3636 (General)
+603 5162 6634 (After Sales Service)
Email : jovenmkt@joven.com.my
Website : www.joven.com.my

MANUFACTURER
JOVEN ELECTRIC CO. SDN. BHD. (107915-U)
Lot 2829, Jalan Sungai Kelkati 32/148, Off Jalan Sri Gambut, Seksyen 32, 40460 Shah Alam, Selangor Darul Ehsan, Malaysia.
Tel : +603 5162 8000
Fax : +603 5162 1881
Email : admin@joven-electric.com
Website : www.joven-electric.com

Authorised Dealer

Pictures are for illustration purpose only. Model outlook and specification may change in the future without prior notice.

www.joven.com.my

ENHANCED DRY-BURN PROTECTION
Patent Pending



CENTRALISED MULTI-POINT SYSTEM Storage Water Heater

With Quad Safety System & Enhanced Dry-Burn Protection

4X QUAD SAFETY SYSTEM

HEAT ELEVATOR™
ENERGY SAVING DEVICE

20% ENERGY SAVER

© copyright: 03/2021 JOVEN

JOVEN
since 1983
Bringing Innovation Home™



ENHANCED DRY-BURN PROTECTION
Patent Pending

YOUR RELIABLE HOT WATER SOLUTION

Storage Water Heater

CENTRALISED MULTI-POINT SYSTEM WITH ENHANCED DRY-BURN PROTECTION

Introducing the latest version of Centralised Multi-Point Storage Water Heater with Enhanced Dry-Burn Protection from JOVEN. Manufactured according to International Certified Standards, reliability is assured with Quality materials and Quad Safety System. The Enhanced Dry-Burn Protection technology auto-trips to protect the heating element in the occurrence of a dry-run or absence of water within the tank.

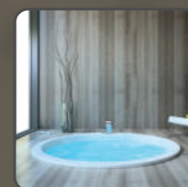
Enjoy energy saving and longer-lasting hot water with the high density CFC-Free Polyurethane Insulation Foam and the Heat Elevator (HE) version of Storage Water Heater. JOVEN Storage Water Heater is the ultimate choice for a more luxurious and hotter water solution throughout your home from shower, bathtub, jacuzzi, rainshower, basin or sink tap. With our technical expertise, your comfort and safety is assured with hotter water at the turn of your mixer tap anytime of the day with JOVEN.



BATHTUB



SHOWER



JACUZZI



WASH BASIN



KITCHEN SINK



WASHING MACHINE

ENHANCED SAFETY

With Quad Safety System (QSS)

Peace of mind with built-in safety system designed for prolonged usage.

- Enhanced Dry-Burn Protection
- Thermostat With Thermal Cut-Off
- Pressure Relief & Drain Valve
- Isolation Barrier Pat.Pending (For Malaysia Only)



POWERFUL

- Delivers up to 70°C of hot water
- Allows sharing between points
- Standard wattage 3kW / 240V



EASY MOUNTING

- Patented Universal Mounting Ring Bracket (For JSH Only)
- Flexible to all horizontal positions (Left, Right, Hanging and Top Mounting)



DURABLE

Built from high quality materials that withstand rust and rupture, thus ensuring long-lasting life and stellar performance.

- Stainless Steel Tank
- Electro-Galvanised Steel Epoxy Coated Enclosure
- High Quality Engineering Plastic



GREEN INNOVATION

- Heat Elevator Technology saves energy by 20%
- Environmental Friendly CFC-Free High Density Polyurethane Insulation Foam for maximum energy saving



JSH SERIES

Horizontal Ceiling Mounting



JSH 25
25 Litres
5.5 Imp. Gallons



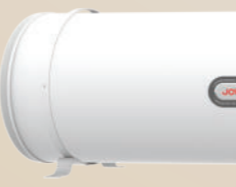
JSH 35
35 Litres
7.7 Imp. Gallons



JSH 50
50 Litres
11.0 Imp. Gallons



JSH 68
68 Litres
15.0 Imp. Gallons



JSH 91
91 Litres
20.0 Imp. Gallons



*Optional with Heat Elevator (Only for JSH with HE Series)

JSV SERIES

Vertical Bathroom & Kitchen Mounting



JSV 25
25 Litres
5.5 Imp. Gallons



JSV 35
35 Litres
7.7 Imp. Gallons



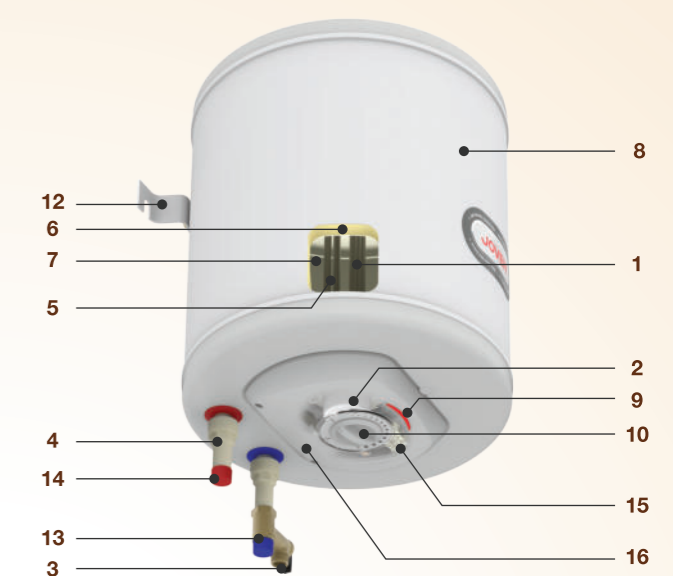
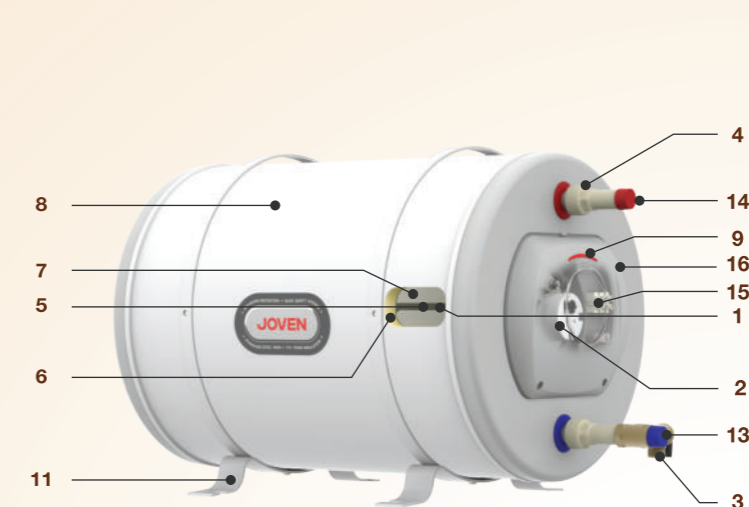
JSV 50
50 Litres
11.0 Imp. Gallons



JSV 50
50 Litres
11.0 Imp. Gallons

Adjustable Temperature Control Knob
Conveniently set your ideal water temperature

Identification Details



JOVEN

Quad Safety System (QSS)

- Enhanced Dry-Burn Protection**
 - Thermostat trips when dry-burn occurs
 - Protects heating element
- Thermostat With Thermal Cut-Off**
 - Thermostatically controlled at 70°C and cut-in at 55°C
- Pressure Relief & Drain Valve**
 - Preset at 8 ± 1 bar to relief any excessive pressure built up within the tank
- Isolation Barrier Pat.Pending (For Malaysia Only)**
 - Isolates electrical leakage

INNOVATIVE AND STANDARD FEATURES

- Heating Element**
 - High quality incoloy material for longer reliability
- Tank Insulation For Heat Retention**
 - CFC-Free Polyurethane Insulation Foam 2.5 lb/ft³ or 40kg/m³ for longer-lasting hot water
- Inner Tank Material**
 - Stainless Steel 304 Standard (Thickness 1.2 mm)
- Outer Tank Material**
 - Electro-galvanised steel
 - Anti-corrosion treated
 - Epoxy coated for long-lasting finish

- Indicator Lamp**
 - Displays red light when heater is On
- Adjustable Temperature Control Knob**
 - Adjust temperature from Low, Med to High (For JSV models only)

INSTALLATION

- Mounting Ring Bracket (For JSH model only)**
 - Patented Universal Mounting Ring Bracket
 - Allows flexibility in mounting the heater in any horizontal positions
 - Expansion bolts for safer mounting
- Hook-On Bracket (For JSV model only)**
 - Vertical Hook-On Bracket
 - Snap-on hook design for easy installation
 - Anti-rust and epoxy coated for better durability
 - Expansion bolts for safer mounting
- Inlet Connection**
 - ½" BSP Stainless Steel Pipe
- Outlet Connection**
 - ½" BSP Stainless Steel Pipe
- Wire Connection**
 - 3-Way Wire Connector ; 3.0 kW ; 15 - 20 Amp
- Installation Cover**
 - High quality flame retardant ABS plastic

Capacity Recommendation

CAPACITY	WASH BASIN	SHOWER	BATHTUB	JACUZZI	RAINSHOWER	KITCHEN SINK (Individual Unit)
25 Litres	•	or 1	-	-	-	Low Usage
35 Litres	•	and 1	-	-	or 6 Inch	Medium Usage
50 Litres	•	2	or Small	-	or 8 Inch	High Usage
68 Litres	•	3	or Medium	or Medium	or 10 Inch	Commercial
91 Litres	•	4	or Large	or Large	or 12 Inch	Commercial

*Kitchen Sink to have Individual Unit from Shower Unit
*Recommended Flow Rate of 6L/min - 8L/min

