



SOLID TO SUCCEED

XE75G

Crawler Excavator Operating weight: 7700 kg / Bucket capacity: 0.33 m³ / Rated power: 42.4 kW



MALAYSIA AUTHORISED DISTRIBUTOR



FINBOND HEAVY MACHINERY SDN BHD

199301026847 (281585-P)

No 7, Lot 66231 (PT50778), Kampung Batu 13 1/2, Jln Kelang,
47100 Puchong, Selangor

Tel : +603-8061 1121 / 8051 1166

Fax : +603-8051 7676

Email : marketing@finbond.com.my



SCAN ME

Applications

Widely used in hydropower, transportation, municipal, landscaping, farmland, and pipeline constructions.

Features

Electronic control pump has accurate flow matching, and it's easy to handle various conditions with E/P/B intelligent modes;

High comfort due to car level NVH optimization, low noise, wrap-around sun shades, and auto AC with std fresh air system;

Upgraded main pump is less jerky with lower pressure loss for compound movements.

More efficient and reliable with less fuel consumption

High quality: just like creating handicrafts, the latest bright paint color, high comfort air conditioning, vehicle pipeline layout optimization, sheet metal process details, highlighting the exquisite industrial level;

Customized engine: XCMG specially customized Kubota turbocharged engine, fast engine response, low noise and low energy consumption, tailor-made for XE75G excavator, ultra-high hydraulic power matching;

More comfortable control: the best control in the industry, soft operation, smooth action, good coordination of compound movements, and super enjoyable experience;

High comfort: high-end sedan-level operating experience, less vibration and noise, quiet and comfortable driving environment, free from external noise disturbance, focus on operation;

Larger size: the size of the whole machine is the largest among the excavators of the same tonnage, relying on the large chassis and large bucket to form the strongest operating capacity;

Rich configuration: in terms of the comfort of the whole machine, we give customers more configuration to meet the operation needs of each type of customer;

All-round improvement: more fuel-efficient operation, more worry-free operation, and more labor-saving maintenance.



Reliability

Reinforced and upgraded structural components and tests under heavy duty conditions improve the overall reliability of the machine.



After the -20 °C low temperature test, the engine is proved to have excellent cold start performance, stable power output, and meet emission standards.



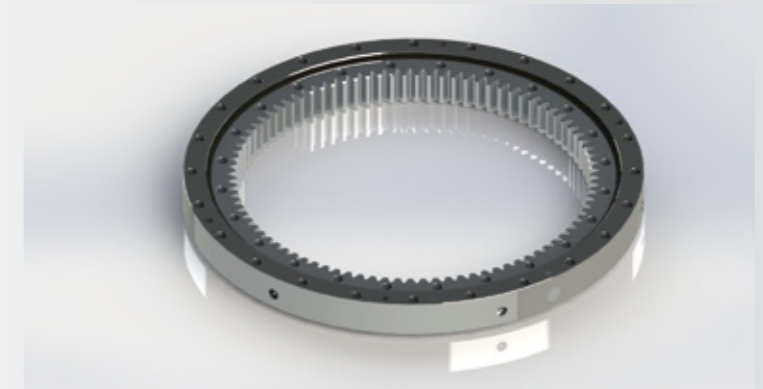
The 200 hours vibration test and 7.5 times load acceleration test were completed to verify the reliability and stability of the entire structure.



After the 3000 meter high-altitude test, it has minimal engine power attenuation and rapid loading response. While maintaining strong power in high-altitude environments, it still has good fuel economy.



The XE75G has completed 3000 hours of excavation, loading, and crushing assessment verification, with stable operation, reliable performance, and all indicators meet the designed requirements.



Optimized main superstructure platform

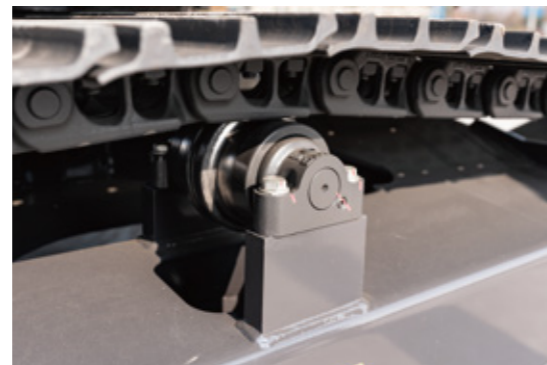
The thickness of the main vertical plate of the superstructure platform is increased by 14 %, and the reliability is improved by more than 10 % under heavy load conditions.

Work equipment

High strength boom and arm with optimized design to meet the needs of high-intensity operations.

Improved reliability and stability of undercarriage

The reinforced X-shape undercarriage frame, combined with larger bottom rollers makes the whole machine more stable in operations such as travel, excavation, lifting.



Buckets

The reinforced bucket and larger volume of wear-resistant materials can increase its lifespan by more than 15 %.



Dual battery

Dual battery design enhances the reliability of starting the entire machine under low-temperature conditions.



Improved Fuel Efficiency

Safety

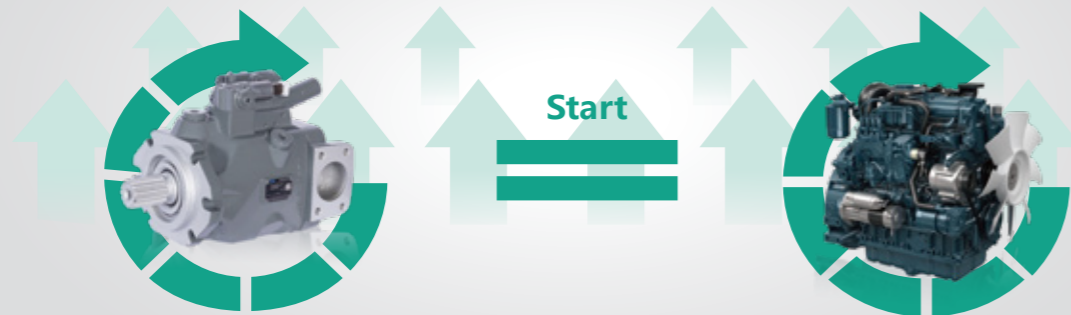


The engine and pump are perfectly matched
Higher efficiency with lower fuel consumption

Equipped with customized Kubota turbocharged engine, with fast response, good fuel applicability, low noise and fuel consumption;
The XCMG customized engine perfectly matches the electric-control large displacement main pump and the new second generation main valve, with customized engine universal characteristic curves, to realize the optimal fuel consumption.

Matching of engine & pump

The response time between engine and pump is better matched for higher efficiency and lower fuel consumption



Enlarged Fuel Tank
Save Downtime

170 L large fuel tank available, with longer working time, save downtime waiting time, and avoid frequent refueling.



Automatic Idle Speed and Special Gear Matching Technology
Reduce fuel consumption

With automatic idle technology, the engine automatically returns to idle speed after the machine stops the action; Fully investigated customers' usage habits and working conditions, special matching for common gears has been conducted, and E (Economy) /P (High-efficiency) /B (Breaking) three operating modes are available; Customers can choose the corresponding operation mode according to the actual working conditions, to achieve the best efficiency and fuel consumption.

Reduce fuel consumption during auto idle.



Certificate OPS&FOPS cab standard Dozer blade

The cab meets the OPG and ROPS safety requirements stipulated by the national standard. High-strength special-shaped steel is stamped and formed in one piece, with good impact resistance, bending resistance and torsional resistance; it meets the requirements of anti-rolling and anti-falling safety protection structure.



Integrated narrow frame skeleton structure with small front side occlusion, wide visual range, small blind spots to improve safety during operations.



Standard hydraulic lock for bulldozer to prevent accidental pipe burst and blade falling, ensuring operator's safety.



Safer at night due to LED lights with good brightness, long lifespan, large wide-angle. Optional alarm lights and buzzers, with sound and light ensure safe transition in jobsites.



High strength irregular steel integrated stamping forming, with good impact resistance, bending resistance, and torsion resistance; meet the requirements of ROPS&TOPS structures.



Comfort

Newly upgraded cab, more comfortable, more considerate, and quieter.

Enlarged deluxe cab, internal space increased by 10%, the working environment is more spacious and comfortable.



Multi-function buttons: More intelligent and convenient features such as Air conditioning one-touch turn on, car-grade Bluetooth, one-touch to answer phone, wiper, gear adjustment, AUX and USB interface music play and other functions.

Monitor: 7-inch touch monitor with clear display and smooth operation.

Suspension seat: The cab is equipped with a new suspension seat, which reduces operational vibration by 50% through the cab damping and suspension seat.



Sunshade: Four-sided sunshade can block ultraviolet radiation so that the environment is more comfortable and cozy.

Adjustable arm rests: Meet different people's manipulate posture, no fatigue with long time operation, and the armrests allow easy height adjustment without use of tools.

Gas spring: The front window of the cab adopt gas spring-assisted structure, which is light and easy to open.

AC: High-power fully auto AC with air volume increased by 25%, cooling effect increased by 20%, and three-dimensional surround air supply improves comfortable body feeling.

Joystick: New operating joystick with 30% lower operating torque dramatically reduces fatigue in long time operation.

Folding pedals:

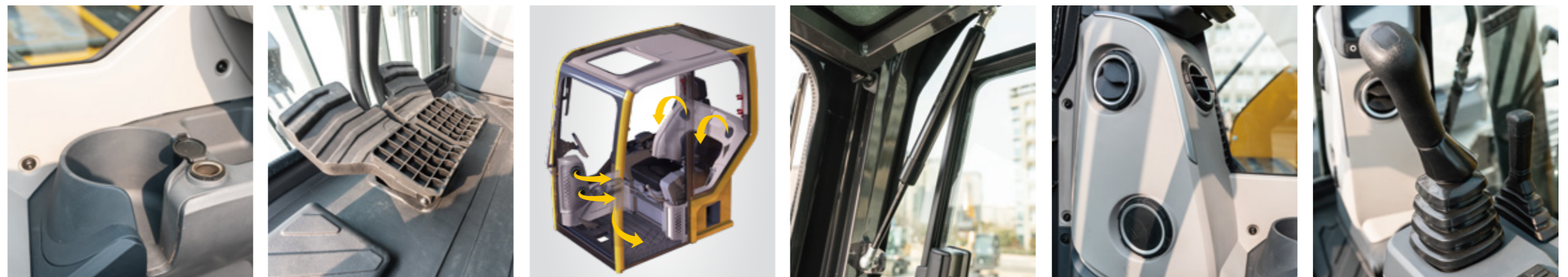
Enlarged folding pedals are comfortable and lighter to operate, and it's easy to clean the floor mat.

Pressurized Cab:

Fully sealed pressurized cab to avoid dust intrusion, noise reduction of 4 dB, quieter working environment.

Configurations:

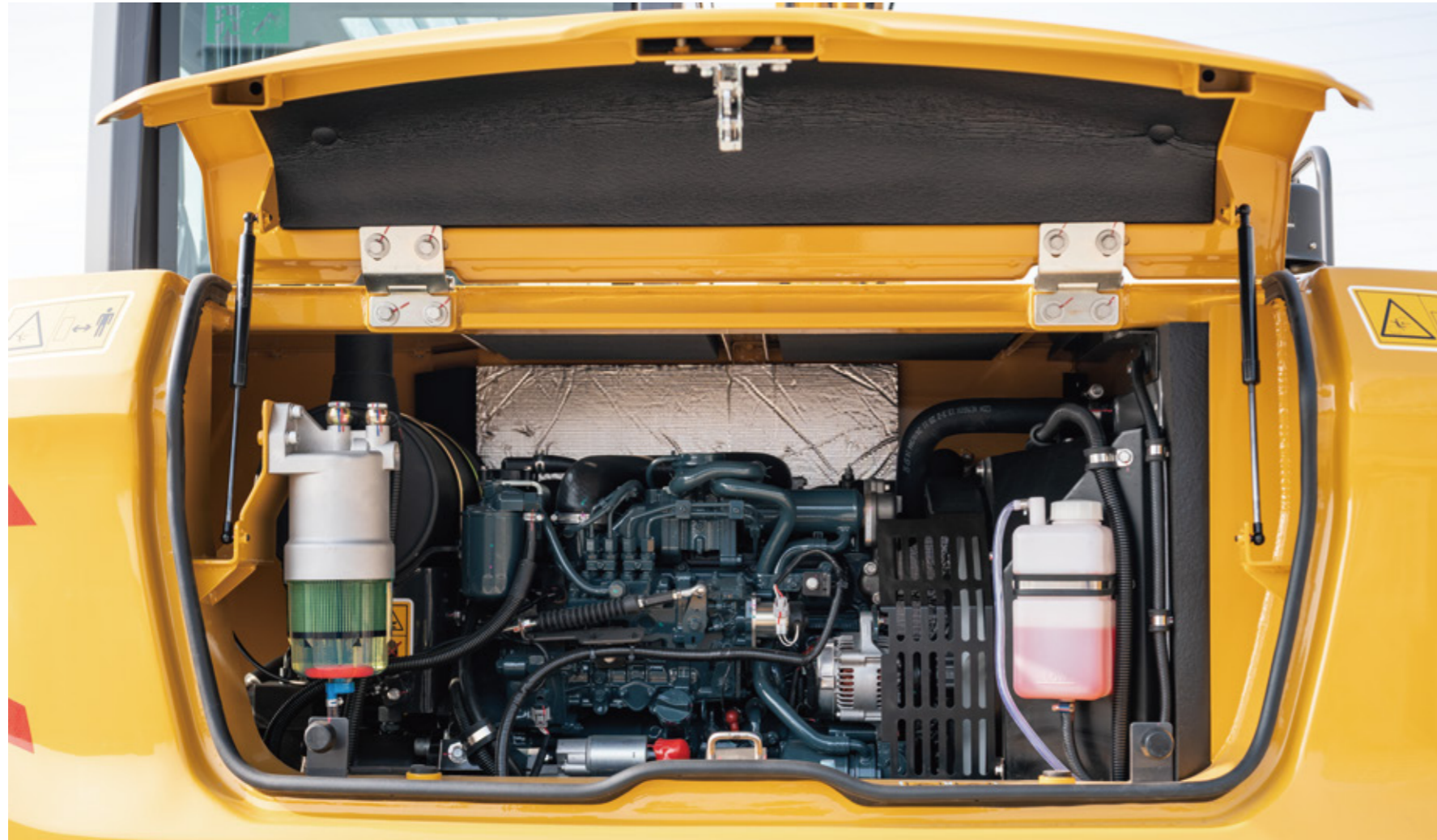
New interior with cup holder, storage, power supply, USB.



Maintenance

Excellent maintenance within reach

Dual pole drive high elevation rear hood makes maintenance and repair convenient of components. Mechanical fuel injection system with high oil applicability. Centralized electrical box, power switches, and batteries are arranged for maintenance.



Maintenance parts within reach

Dual pole drive high elevation rear hood provides a clear view of components. Centralized electrical box, power switches, and batteries for easy maintenance. Flippable condenser for easy of the radiator cleaning. Metal toolbox, grease bucket bracket and gun bracket as standard. Air filter, air conditioner inner and outer filter can be manually replaced, convenient and fast.



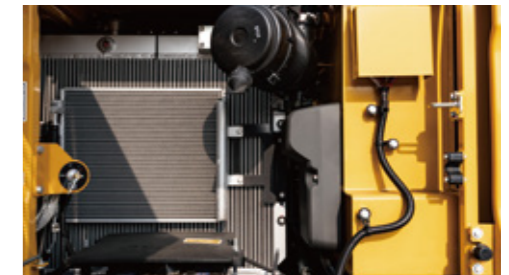
Tool box



Air spring



Air filter



Radiator



Diesel filter



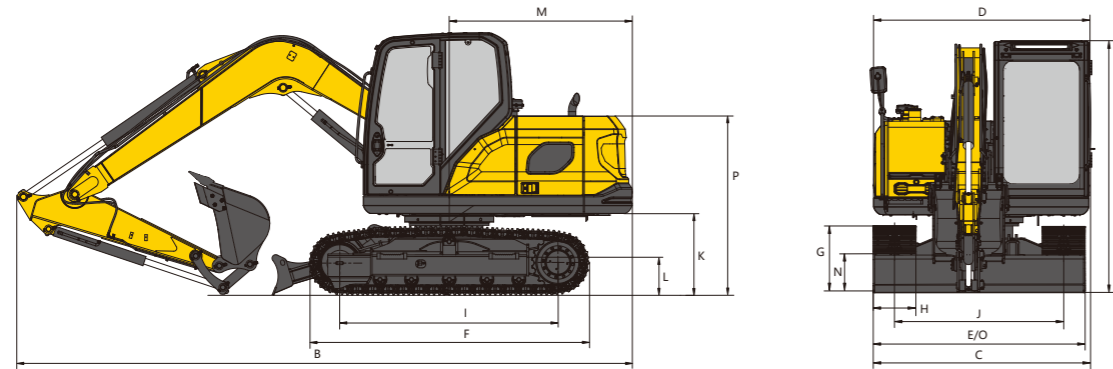
Grease bucket bracket



Convenient maintenance saves labor hours

Machine dimensions

Technical specifications



Item contents	Unit	Parameters
Length of boom	mm	3720
Length of arm	mm	1622

A Overall height		
Cab height	mm	2645
OPG height	mm	2718
Handrail height	mm	1093
Height of warning light	mm	2779.5

B Overall length		
With boom/arm/bucket installed	mm	6185
With boom/arm installed	mm	6150
With boom installed	mm	5380
With boom/arm/bucket installed (with piping)	mm	6185
With boom/arm installed (with piping)	mm	6150
With boom installed (with piping)	mm	5380

Item contents	Unit	Parameters
C Overall width	mm	2265
D Upper structure width	mm	2260
E Chassis width (extended/retracted)	mm	2250
F Track length	mm	2825
G Track height	mm	696
H Standard track shoe width	mm	450
I Track wheelbase	mm	2195
J Track gauge (extended/retracted)	mm	1800
K Counterweight ground clearance	mm	813
L Minimum ground clearance	mm	385
M Tail Swing Radius	mm	1840
N Dozer blade height	mm	385
O Dozer blade width (unfolded/folded)	mm	2250
P Hood height	mm	1800

Item contents	Unit	Parameters
Operating weight	kg	7700 Including operator (75 kg) Contains 90 % fuel

Engine		
Engine brand/model	-	Kubota V2607
Rated power/rpm	kW/rpm	42.4/2000
Direct injection	-	✓
4-stroke	-	✓
Water-cooled	-	✓
Turbocharged	-	✓
Stroke	mm	110
Cylinder bore	mm	87
Number of cylinders	-	4
Maximum torque/rpm	N·m/rpm	222.5/1400-1800
Displacement	L	2.615

Main performance		
Travel speed (high/low)	km/h	4.3/2.5
Swing speed	r/min	11
Maximum swing torque	kN·m	23
Gradeability	-	35° (70%)
Ground specific pressure	kPa	33.5
Bucket digging force (SAE)	kN	54
Bucket digging force (ISO)	kN	57
Arm digging force (SAE)	kN	35
Arm digging force (ISO)	kN	38
Maximum traction force	kN	68.3

Track		
Standard track shoe width	mm	450
Number of track shoes (per side)	-	39
Number of track roller (per side)	-	5
Number of track carrier roller (per side)	-	1

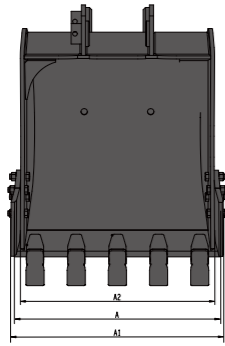
Hydraulic system		
Main pump	-	Plunger pump
Maximum flow rate of main system	L/min	163.8
Main system pressure	MPa	28.4
Pilot system pressure	MPa	3.7 ± 0.2
Travel system pressure	MPa	28.4
Swing system pressure	MPa	23.5

Oil capacity		
Fuel tank capacity	L	170
Hydraulic oil tank capacity	L	76

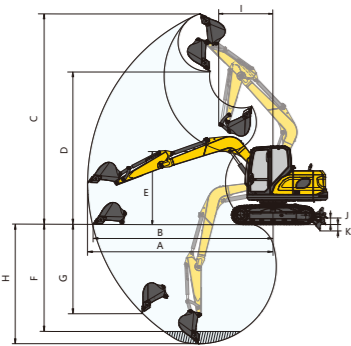
Cab standard		
ISO 10262: 1998 (OPG)	-	✓
ISO 12117-2: 2008 (ROPS)	-	✓

Working range and lifting capacity

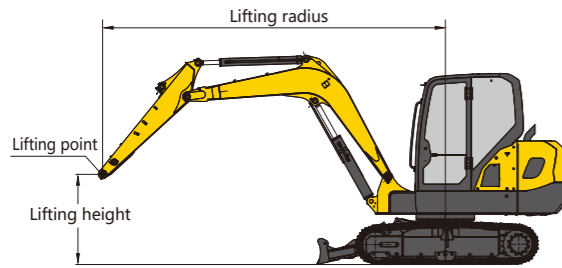
Standard and optional equipment



Item contents	Unit	Parameters
Transportation dimensions (L*W*H)	mm	970 × 832 × 830
Bucket teeth radius	mm	990
Bucket width (main blade) A	mm	806
Bucket width (side teeth) A1	mm	832
Bucket width (side blade) A2	mm	760
Bucket capacity	m ³	0.33
Weight	kg	250



Item contents	Unit	Parameters
Length of boom	mm	3720
Length of arm	mm	1622
A Maximum reach	mm	6260
B Maximum reach at GRP	mm	6070
C Maximum digging height	mm	7085
D Maximum unloading height	mm	5160
E Minimum unloading height	mm	2476
F 8 ft. level floor digging depth	mm	3628
G Maximum vertical digging depth	mm	2960
H Maximum digging depth	mm	4020
I Minimum swing radius	mm	1818
J Maximum lifting height of dozer blade	mm	440
K Max. cutting depth of dozer blade	mm	445



Never attempt to lift or hold any load in excess of the rated lifting capacity at the specified lifting radius and height. The lifting point is located on the lifting eye of the arm.

When determining the net lifting weight allowed for the machine, the weight of the slings and any auxiliary lifting devices must be deducted from the rated lifting capacity. Lifting capacity is based on the machine standing on firm and level ground. The operator should consider working conditions such as soft or uneven ground. Before operating the machine, the operator should familiarize himself with the safety procedures in the relevant manual.

👤 : Over front
👉 : Over side

Lifting point height (m)	Rated lifting capacity (kg) 👤					Lifting capacity	Rated lifting capacity (kg) 👉					Lifting radius (m)	
	Lifting point radius (m)						Lifting point radius (m)						
	1.0	2.0	3.0	4.0	5.0		1.0	2.0	3.0	4.0	5.0		
6.0						*1811						*1811	2.50
5.0			*1555			*1535			*1555			*1535	3.80
4.0			*1685	*1656		*1425			*1685	*1656		*1425	4.60
3.0			*2107	*1818	*1469	*1406			*2107	*1756	1227	*1222	5.10
2.0			*2681	*2074	1536	1431			2501	1660	1194	1112	5.20
1.0			3131	2052	1491	1389			2314	1567	1151	1074	5.20
Grounding			3027	1984	1458	1432			2220	1503	1120	1101	5.10
-1.0	*3072	4689	2998	1957		1591	*3072	4257	2194	1479		1217	4.70
-2.0	*5216	*4148	*2974			2001	*5216	*4148	2224			1517	4.10
-3.0						*2176						*2176	2.80

Lifting capacities marked with an asterisk (*) are limited by hydraulic capacity, see note 2.

Note 1 The lifting capacities in the table refer to the case where no external thrust intervention is included.

Note 2 The lifting capacities in the table should not exceed 75% of the minimum tipping load or 87% of the hydraulic capacity.

Note 3 The least stable position is on the side of the excavator.

Note 4 The lifting capacity table applies only to machines originally built and normally assembled by the manufacturer.

Note 5 The machine is rated for an operating weight of 7700 kg, which includes 0.45 m steel tracks, a 3.72 m boom, a 1.622 m arm, a 650 kg counterweight, all working fluids, and a 75 kg operator, exclusive of the bucket.

Note 6 Lifting capacity shall be in accordance with ISO 10567:2007.

Note 7 For all configurations of track specifications, the lifting capacity is kept within ±5%.

WORK EQUIPMENT

3.72 m boom	●
1.66 m arm	●

CABIN

Cab	●
Deluxe seat	●
Cab full-guard	○

HYDRAULICS

Dozer cylinder safety valve	●
Breaker system	○
Quick-coupler	○

ATTACHMENTS

Quick coupler	○
Hammer (standard)	○
General duty bucket 1: capacity 0.33 m ³ , width 832 mm, weight 250 kg	●

UNDERCARRIGE

Track 1: 450 mm triple grouser shoes (standard)	●
Track 2: 600 mm triple grouser shoes	○

ELECTRIC

Displayer languages: Chinese, English, Russian, Portuguese, Spanish, French, Italian, German,	●
Travel alarm	○

OTHER EQUIPMENT

0.65 T counterweight	●
----------------------	---

● Standard ○ Optional

XCMG

SOLID TO SUCCEED