

SURGICAL DROP AWAY APRON



The pictures are for illustration purpose only and may not represent the final look

The drop away apron is projected to be used at operation theatre where apron is required for surgery for shorter periods of time. The apron is fasten on both shoulders with quick release buckles to allow the apron to be removed during procedures when protection is no longer required.

Pressing the shoulder clips through the sterile gown allows the apron to drop to the floor without compromising the sterility of the healthcare professional.

- Fabricate in Malaysia with devotion to premium quality and lightest core materials only
- Core materials complies with IEC 61331-1:2014 and further tested by Agensi Nuklear Malaysia

CAT# : EGMG / EWMG
 Material : SuperLight Lead Free / GreenLight Light Weight
 Lead Equiv. : 0.35 / 0.5mmPb
 Embroidery opti on : YES
 Size : S - 3XL / Custom made

PRODUCT DETAILS



Double YKK buckles



Waist buckle



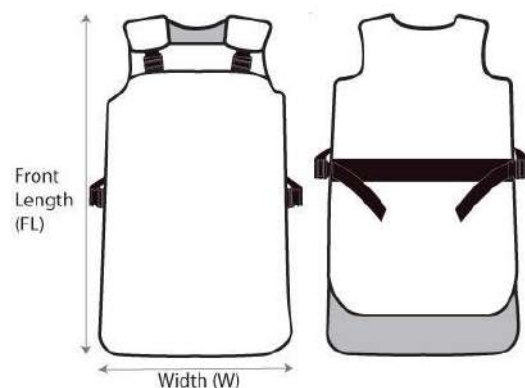
Side slit

SIZE

Size	Front Length (mm)	Width (mm)
S	970	530
M	990	560
L	1020	600
XL	1070	630
2XL	1100	660
3XL	1120	690

*Actual size may vary within 5%

*Actual weight may vary within 8% depending on type of fabric and accessories used, variation in cuts and different batches of materials used.

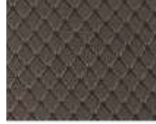


FABRIC COLOUR

RISPTOP NYLON FABRIC + PU COATING



FLRS-06
SAPPHIRE



FLRS-10A
ONYX



FLRS-14
RUBY



FLRS-31
EMERALD



FLRS-39
PERIDOT



FLRS-16
SHADOW



FLRF-04
GOLD



FLRF-05
SKY BLUE



FLRF-15
ARMY KHAKI



FLRF-17
DEEP BLUE



FLRH-37
LAKE BLUE

420D OXFORD POLYESTER + PU COATING



ZLOF-03
BLUE



ZLOF-08
WINE RED



ZLOF-12
OLIVE



ZLOF-09
NAVY BLUE



ZLOF-04L
ORANGE



ZLOF-17L
APPLE GREEN



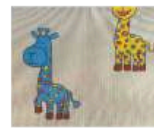
FLOF-06
ROYAL BLUE



ZLOF-BR
BEAR



ZLOF-CT
CAT



ZLOF-GF
GIRAFFE