

Patented products, counterfeiting will be investigated!

Patent Number: 201720920126.x

Product name: Sliding door controller

Product model: GCP-SLD-SL8300S/PANEL

Product Features:

In order to make the installation and debugging easier to use, our company specially developed intelligent self-learning sliding door controller. The controller adopts imported microcomputer chip, digital control, powerful function, high safety performance, easy installation and debugging and many other characteristics.

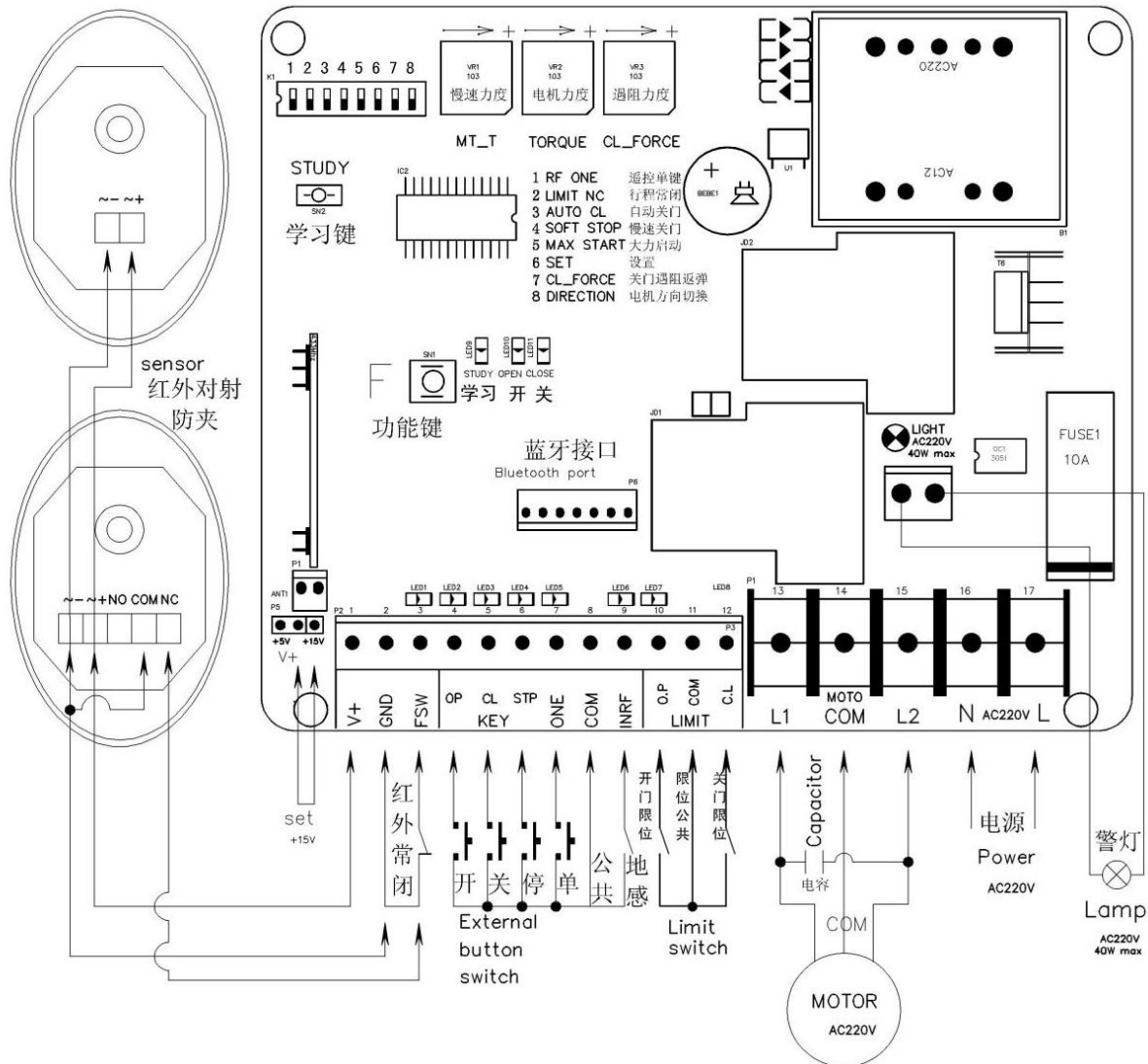
Product features:

1. If the door body is not in the stroke, the door body will slow to the limit for the first operation every time the power is on, and the inertia will be prevented from rushing out of the limit.
2. Anti-impact stroke design when the door body reaches the stroke, the motor can only act by pressing the key in the opposite direction to prevent rushing out of the stroke. Note: It has power off and hold function in place, and can only act in reverse after being powered on.
3. The use of travel special hall element, magnet installation only points north and South Pole (magnet can be pulled on), but not points high and low. The use of external travel. Two types of board, as long as the motor action and stroke input lights of the same color can control the motor to stop in place. If the direction is wrong, the motor and stroke direction can be changed simultaneously by dip 8.
4. Motor time protection to avoid the motor in the stroke failure for a long time operation, the controller will automatically learn the motor running time, without manual setting. Add 10 seconds to the travel time. The motor will be automatically saved after several rounds of complete movement (the motor protection time can also be set manually, in the same way as setting the slow function in place).
5. Automatic closing function time can be adjusted from 1 to 250 seconds (time setting, see automatic closing setting operation).
6. Motor strength adjustment can adjust the motor operation strength.
7. Motor slow strength adjustment can adjust the thrust of the motor at slow speed.
8. Resistance return function can be adjusted through the potentiometer resistance (dial 7 ON position).
9. Infrared input mode (default is normally open) can be set to normally open or normally closed mode, operation see hidden function.
10. with remote control function, remote control sensitive, remote control distance, strong anti-interference, and the use of the current advanced jump coding and decoding technology, than the traditional remote control used in the market (password number is 2^{32} power) more high security And confidentiality. There are 400 million passwords and they are unbreakable.

Product parameters:

1. working power supply: AC220V±10%	2. Maximum output current: 10A
3. Fuse selection: AC220V 10A	4. remote control distance: open > 30 meters
5. Working temperature range: -25 degrees +75 degrees; Relative humidity : <60%, no condensation.	

Wiring diagram:



Dial the code function

- B1. Remote control single button
- B2. The stroke is normally open and normally closed
- B3. Automatic closing function
- B4. Slow function in place
- B5. Maximum power start
- B6. Function Settings
- B7. Opening and closing resistance function
- B8. Motor direction toggle will change both motor direction and stroke direction

Remote control code matching and elimination

1. Remote control configuration code:

Press STUDY for two seconds to let go, and then hold down any key of the remote control. After hearing a beep, let go. Multiple, repeat operation. It can be equipped with up to 300 remote controls. Only the second generation flash blue light and the third generation flash green high-speed remote control.

2. Remote control cancellation:

Hold the STUDY button for about eight seconds, then let go when you hear a beep and clear the transmitter.

3. Remote control single button control:

When the red dip code 1 is in the ON position, the remote control is controlled by a single key cycle, with four state cycles of ON/OFF/OFF. Remote control with which key code on which control

4. Remote three-button control:

When the red dip 1 is in the OFF position, the remote control is in three-button control mode. That is, switch on and off respectively correspond to the switch on and off lock on the remote control.

Select the dialing function

1. Remote control single button control B1:

When the red dip switch 1 is in the ON position, the remote control is single-button cycle control, and the three-button control is in the OFF position.

2. Motor stroke normally open normally closed switch B2:

The default is normally open. When dial 2 is in the ON position, the travel limit is normally closed

3. Automatic closing function B3:

Red DIP switch 3 When the switch is in the ON position, enable the automatic door closing function. When the door body opens to the limit, enter the closing time timing.

Time setting: Only DIP 3 and DIP 6 can be ON. Press the function key (F) once for one second

Dip switch 6 to the OFF position, while DIP switch 3 remains unchanged.

4. Door body in place and slow function B4 (the operation is the same when setting motor protection time) :

Manual setting (recommended): Close the door electrically or manually, turn on B4, and press F

After holding the hand for more than 5 seconds, the door will open at high speed (let go at this time), when the door opens ,After the door is in place, the door will be closed after 1 second delay, and there will be a slow arrival when the door is nearly closed to the travel position

Close the door position, at this time, set the slow speed to complete, B4 remains unchanged.

Note: If the motor thrust is not enough in the slow speed process, the slow thrust (MT) potentiometer can be adjusted to adjust the strength. Door body slow position

The fixed slow position is about 30 centimeters.

5. Maximum power starting function B5:

When the red dip code 5 is in the ON position, turn ON the maximum power start function. When the door body is heavy, soft starting cannot start, you can switch to 5

Hit the ON position to start the door, but this will increase the noise of the door starting.

6. Function Setting B6:

When the red dip code 6 is in the ON position, it can set the remote control single key, automatic closing time and other functions. After setting, it must be played to the OFF position

7. Resistance return function B7:

Red DIP 7 in ON position, open the door body encountered resistance return function.

Function optimal adjustment method: When the door opens and closes normally, open this function, perform the closing action, and adjust in the closing process

Resistance potentiometer (FORCE), counterclockwise direction, so that the door can automatically stop and return, then this door body in resistance to return

You can add a point clockwise as the critical point of resistance. When this setting is found to be obstructed in the measurement

Or relatively strong, can be appropriate counterclockwise adjustment of motor potentiometer (TORQUE), so that the door body resistance is appropriate.

8. Motor direction conversion B8:

In the case that the direction of the door body and the limit can correspond, in the case that the door body is not in the limit and in the case of stopping, dial 8 to

ON position, the motor direction and stroke direction can be changed simultaneously.

To sense function

There are three states of geosensory input:

1. When closing the door, the door will stop to open the door when the ground sensing signal is input. If there is no ground sensing signal input within 5 seconds, the door will open for 5 seconds and execute the closing action.

- When opening the door, the door body will continue to open after the ground sensing signal input. If there is no ground sensing signal input within 5 seconds, the door will open 5 seconds after the door, perform the closing action. If the ground sense has been input, stop after 20 seconds of opening the door, and wait for the ground sense signal to disappear before performing the closing action.
- When the door body opens to the travel position, the door body will perform the closing action 2 seconds after the ground sensing signal is input.

Optional accessories

- The lights: The door opening machine can be connected with 220v ac warning light.
- Emergency stop switch: When the door opening machine is in the process of operation, press this switch door body to stop immediately.
- Switch the switch manually

View Settings for hidden Settings: B6, B7 for hidden Settings

- ◆ Cancel the time protection B1,B6,B7 in the ON position press the F key corresponding to sound 2 sound of the ground sense input indicator light ON, at this time to cancel the motor protection time, press the - F key will sound 1 sound, restore the motor protection time.
- ◆ Remote control locking B2,B6,B7 in the ON position press F key corresponding to will ring 2 sound about the door input indicator light ON, at this time the remote control lock key can lock manual function (pedestrian channel function priority), and then press F key will ring 1 sound to cancel the remote control lock.
- ◆ If you press the F key in the ON position of pedestrian channel B3,B6 and B7, it will sound twice and the input indicator light will be steady ON. After the door is closed in place, the remote control lock key will open the door for the pedestrian channel and stop after 4 seconds. Pressing the F key again will ring 1 time to cancel the pedestrian passage function. Change the time of the pedestrian passage: close the door until the limit position B3, B6, and B7 are ON. Hold down the F button and the back door will start and open by itself if there is a sudden announcement for 4 seconds. Release the F button and press the F button again when the door opens to the desired position. Time the walkway.
- ◆ Infrared normally closed B5,B6,B7 ON the position of the corresponding F key will sound 2 sound infrared input indicator light ON infrared use normally closed mode, and then press the F key will sound 1 sound to restore the infrared normally open mode. The factory default is normally on.
- ◆ Restore default Settings: power ON the case of B1, B2, B3, B4,B5,B6, B7,B8 all dial to the ON position, and then dial back to restore the default Settings, note: infrared setting department will reset.

Note: When setting the hidden function, please pull out the terminal, so as not to affect the indicator function of the external input (if there is no external connection cannot be pulled out)

Common faults and troubleshooting methods

The fault phenomenon	The analysis reason	Processing method
The circuit board is not responding at all	Whether the socket is powered on	Check with an electrician
Press the remote control door does not respond	<ol style="list-style-type: none"> The remote control does not have a code The remote control battery is dead Check whether the emergency stop input is disconnected 	<ol style="list-style-type: none"> Re-configure the code by referring to the second point Replace the battery of the same model Check that the input device is correctly lighted
Remote control is too close	<ol style="list-style-type: none"> Battery life is too long Interference of the same frequency signal 	<ol style="list-style-type: none"> Replace the batteries with new ones of the same model You have to wait for distractions to go away
The door does not close automatically	The automatic closing function is not set	Refer to the automatic closing setting