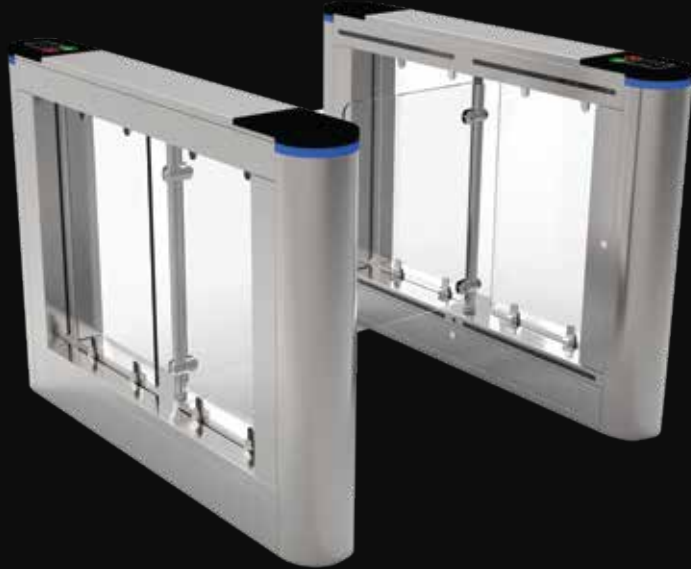


RG-TFB306

Swing Gate Turnstile



RANGER
AUTOMATION · REVOLUTION



RG-TFB306 is a direction indicator, showed that pedestrian access to the current status of, & guide pedestrians correct and smooth passage/

RG-TFB306 utilize auto-reset function, if no passing during identified card-reading time, the system will reset automatically the passengers are prohibited to pass until their second identified reading.



With voice & strobe light alerts



Double anti-clipping function



Use Various type of cards & Bar code to achieve access



Can set delay closing in 1-60s

Technical Data

Unit Model	RG-TFB306
Dimension	1400*185*1020mm
Unlock Time	0.2s
Passage Width	≤900mm
Throughput Rate	35p/m
Power Supply	100~240V
Max Power Consump	35W
Accessible	IC/ID card, bar code & magnet cards
Motor Voltage	24V
Working Temperature	-25~70°C
Anti-clipping	Double (Photocell & Mechanical)
Net Weight	95KG

Dimension(mm)

