

CH 3  
also is normal  
trigger button  
but the relay  
will hold on 5  
second



CH 1 & 2  
This two is normal  
trigger function

4 Button is for Light function

# CST-024 W/4

This is a 4CH remote it is using 433mhz

WIFI LED status  
LED off, there is no link network  
LED bright, normal work  
LED fast flash, into the fast  
distribution mode  
LED slow flash, into the hot  
distribution network



RED = AC / DC +  
BLACK = AC / DC -

BLUE = Magnet input  
WHITE = COM

BROWN = CH1  
GRAY = CH2  
ORANGE = CH3

Operating Voltage :DC12-40V / AC 9 -28V ; DC12V 60MA MAX

WIFI Frequency : 2.4G , IEEE 802.11b

Remote Control IC : SMC5326P/S ( if another model want pair remote with this 024/W can but need confirm the ic code is a same )

Working Sensitivity And Distance : -122DB , Open the distance 3000M  
( With the T3000)

# Remote another model can pair with this WIFI receiver

1) RC-CST 016

2) RC-CTS 022

3) RC-CST 16

4) RC-CST 17

5) RC-CST 17-4

All of this remote is 433 mhz  
this wifi remote just can pair with 433 mhz

SAVICO  
Exist to Secure



■ = CONNECTOR

For light function, need have an external relay

NC no need to use



AC 240v  
POWER  
SUPPLY

N

L

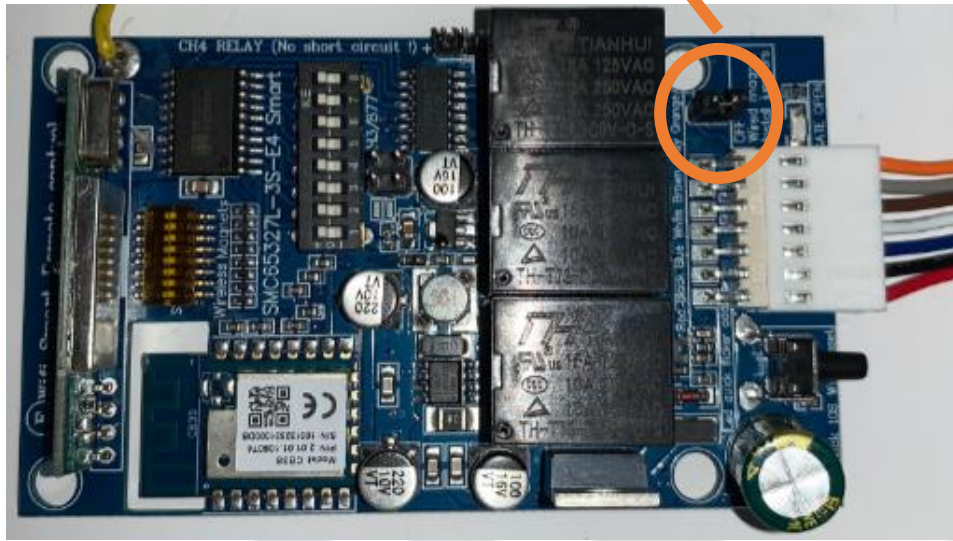


# The gate status can be seen on apps directly

Here have a jumper .....

When the jumper closing times : Apps will show the gate close

When the jumper open times : Apps will show the gate is open



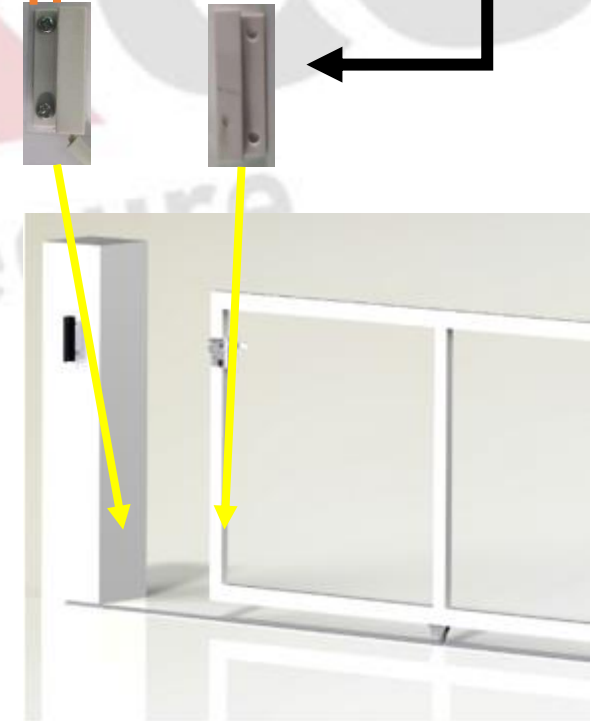
COM

MAGNETIC CONTACT (NO)

This is the alarm sensor when using you can see on your apps the gate status is open or close

If u want seem status on apps u must need open the jumper and connect with the magnetic contact to the alarm sensor

## Method 1

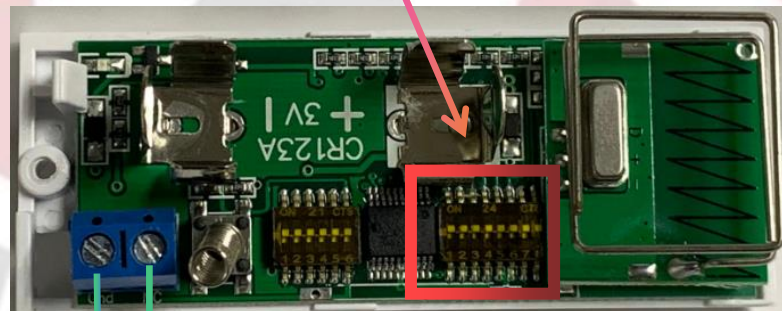


# Method 2

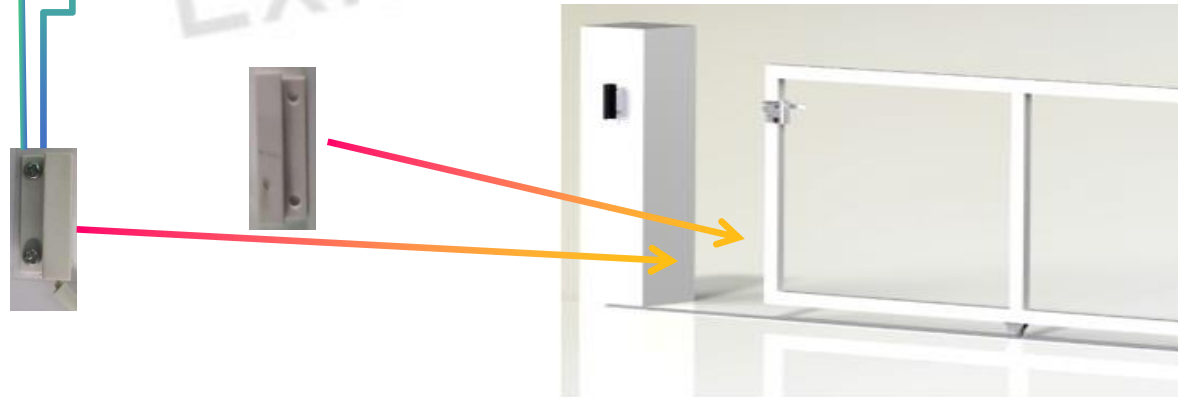
this method was connect with wireless magnetic sensor

this u just need pair the same receiver DIP SWITCH with sensor DIP SWITCH

( N C )



this magnetic sensor is from alarm, the code is XA-600-D



This receiver can use app for control

Can use this Two App to control

Tuya Smart



Smart Life



cure



SMART LIFE APP

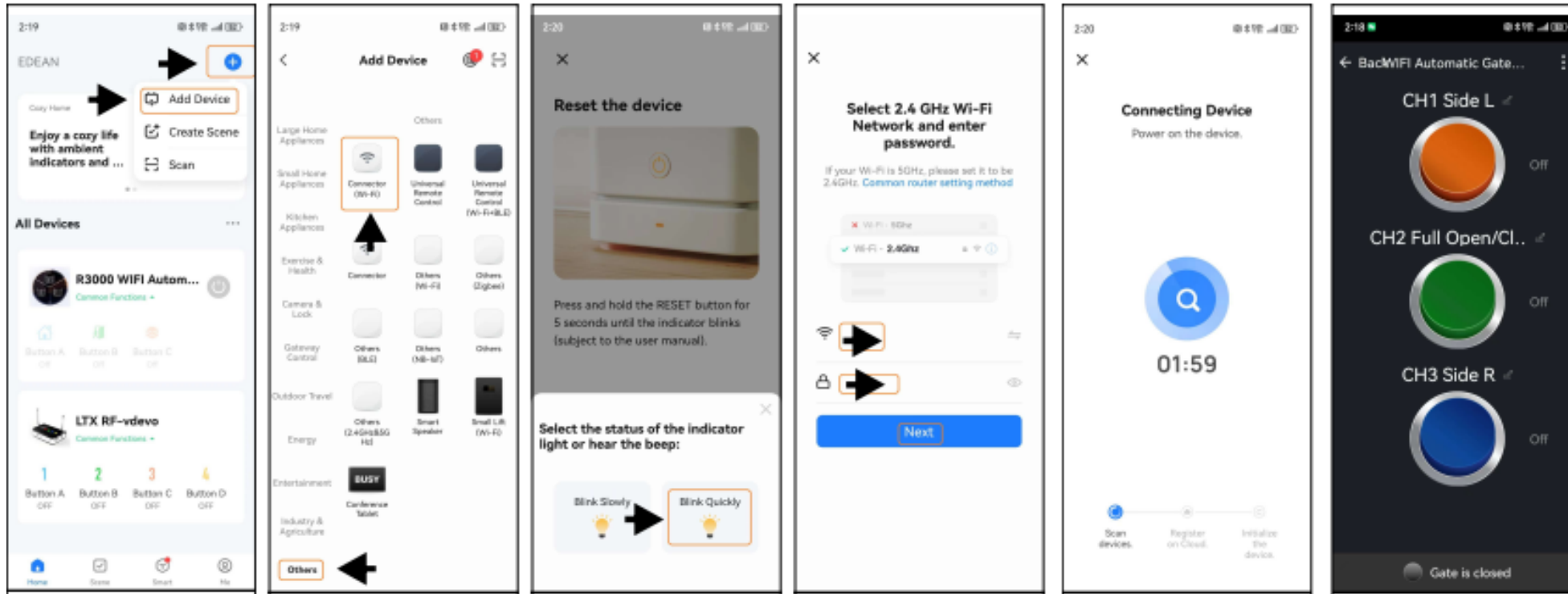
A. Scan QR codes to download apps, or Google Market Search for SMART LIFE, App note users

B. phones Connect to 2.4 gwi-fi and turn on Bluetooth

C. Press the WIFI button for 10 seconds, the LED flash quickly, if not, repeat for 10 seconds, into the fast distribution APP network

D. Click on the top right corner of the APP to add the device, click on the bottom corner of the other, select the WIFI connector, and then next, enter the WIFI user name and password

If the Bluetooth connection is complete, it will automatically pop out and click install

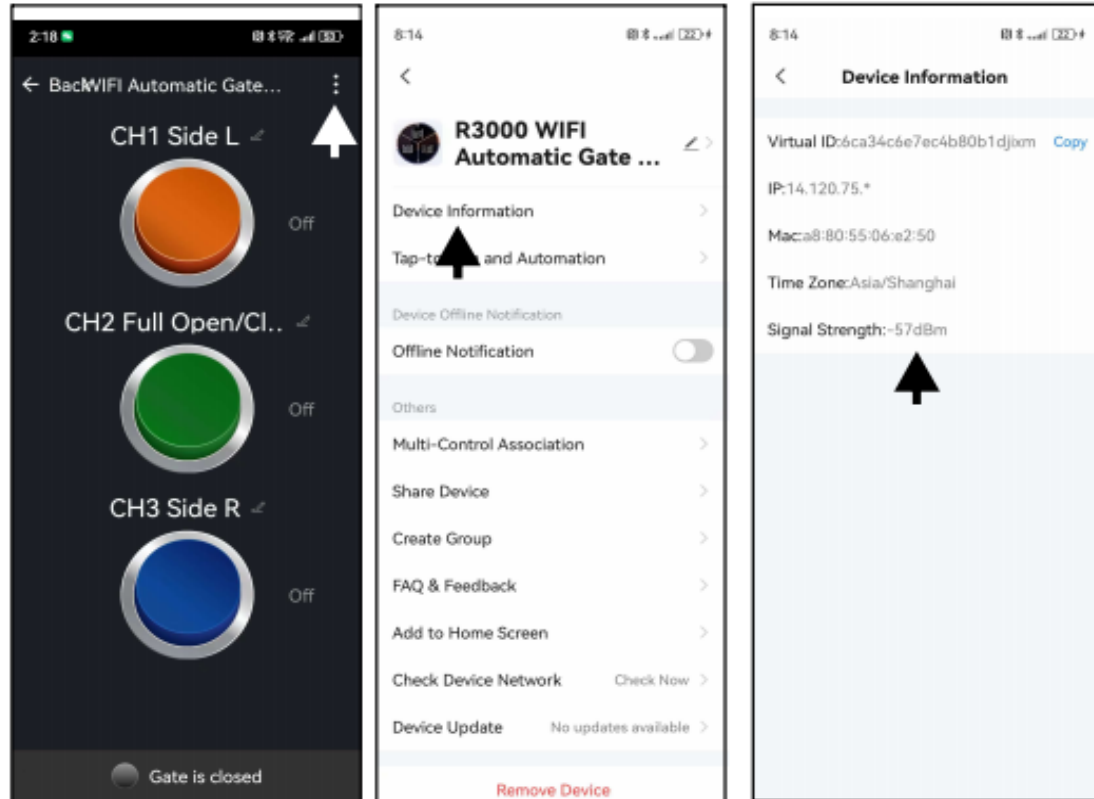




# Checking signal strength

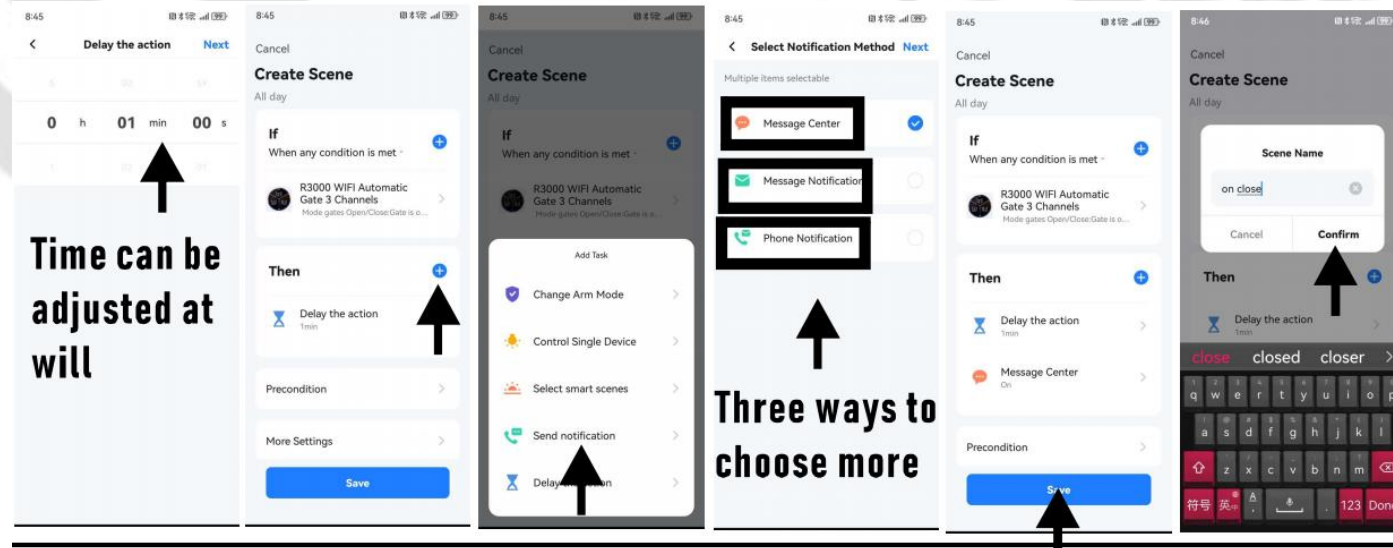
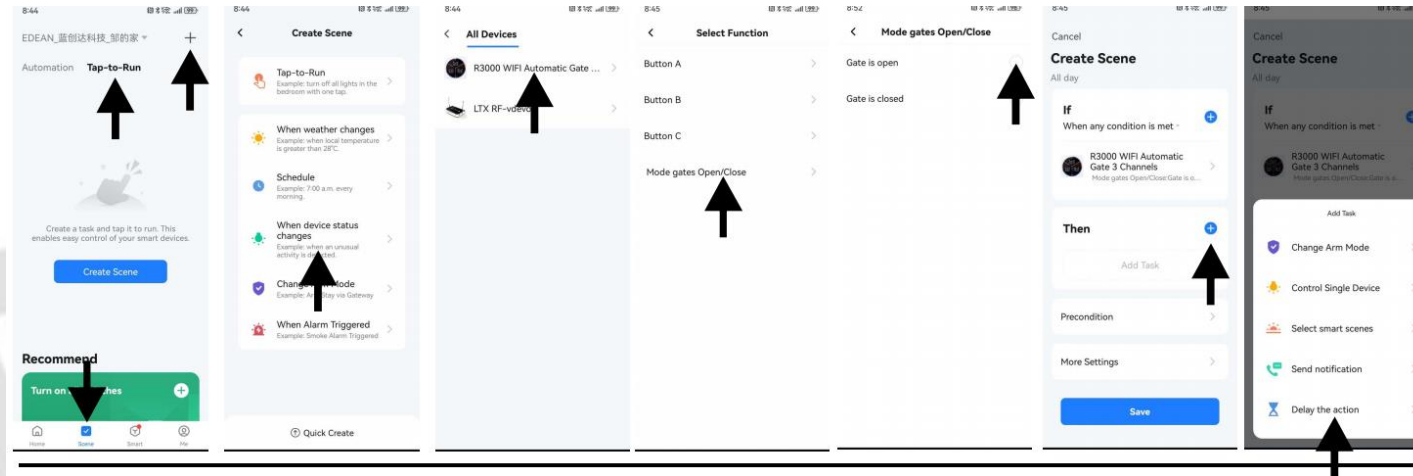


## 7. Check the signal strength



with a minimum of -85 dbm and a maximum of -30 dbm. When the signal is below -85 decibels, adjust the WIFI position or increase the AP

This step is set a certain time without closing the gate to remind



# Set the automatic gate closing ,timeing gate closing

