

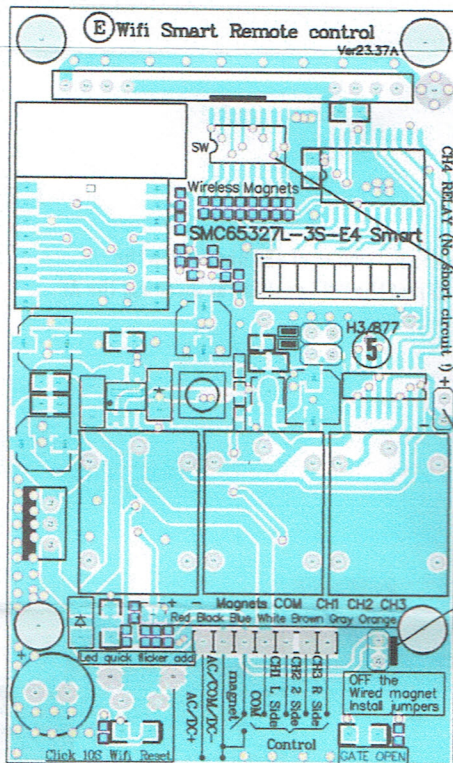
RC-CST024-W/4 WIFI Smart 4CH Remote control receiver

Note: before installation, please confirm the installation location of this device, mobile phone can receive home WI-FI, if not, please increase AP. After installation, run the signal test described on the last page of the manual, with a minimum of -85 dbm and a maximum of -30 dbm. When the signal is below -85 decibels, adjust the WIFI position or increase the AP.

- 1.Support for two-way wireless detectors Wireless Gate magnetic,And wired gate magnets
- 2.Support Open Door, Close real-time APP information notification, phone SMS notification, call notification
- 3.Supports automatic door opening/closing, timed automatic door opening/closing, and scene control linkage
- 4.Working Sensitivity and distance: -122DB, Open the distance 3000M (With the T3000)
- 5.Supports APP:SmartLife / Tuya/WIFISMARTCONTROL
- 6.WIFI frequency : 2.4G IEEE 802.11b
- 7.Remote control Frequency: 433MHZ/330MHZ optional (CST15/015 330MHZ CST16/016 433MHZ CST17/017 433MHZ CST22/022 433MHZ)
8. Remote control IC: TAIWAN SMC5326P/S
- 9.Access: 2CH/ 4CH Remote control
- 10.Operating Voltage Current: DC12-40V / AC9-28V ;DC12V 60MA MAX

WIFI LED status
 LED off, there is no link network
 LED bright, normal work
 LED fast flash, into the fast distribution mode
 LED slow flash, into the hot distribution network

Installation instructions



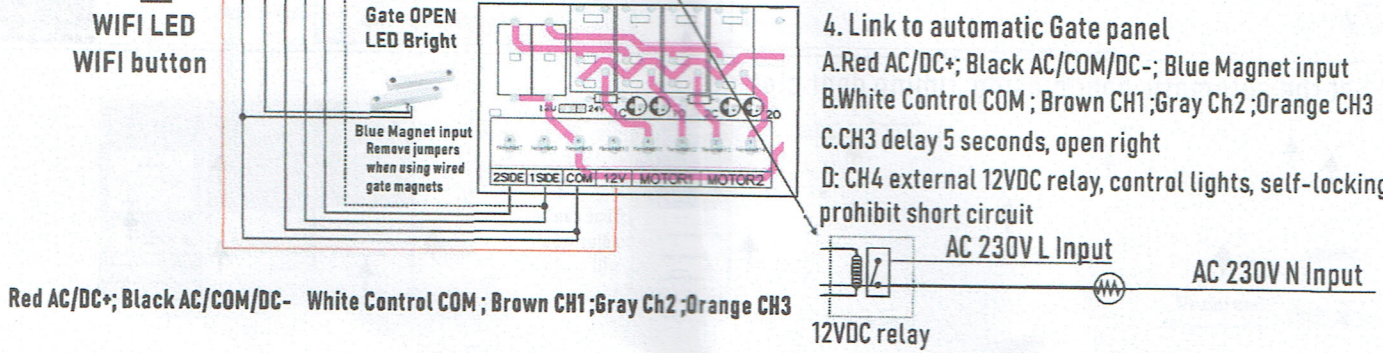
ANTENNA
 1. The antenna is pulled up to maximum height, or sideways to maximum length (Keep the antenna as far away from other cables as possible. Do not bind the antenna to other cables, otherwise it will affect the remote control distance)

2. Install two-way wireless door magnets (Please choose waterproof style for outdoor)
 A. DIP switch all 6-bit set to the upper, match the device (Can not change)
 B. DIP switch 8-bit set The R3000 WIFI Smart 4CH receiver has the same ID as the wireless detector, Different users use different ids
 C. Short-circuit jumper, turn off wired gate magnet
 D. Install the Iron Gate wired gate magnet to the two-way wireless detector
 If no wireless gate is selected, use a wired gate and remove the short-circuit jumper

3. Match the remote
 A. SMC5326P/S-3
 B. Frequency is 433 mhz or 330 mhz
 C. Receiver is set to the same as the remote control and tristate switch, but different users can not repeat it



4. Link to automatic Gate panel
 A. Red AC/DC+; Black AC/COM/DC-; Blue Magnet input
 B. White Control COM; Brown CH1; Gray Ch2; Orange CH3
 C. CH3 delay 5 seconds, open right
 D. CH4 external 12VDC relay, control lights, self-locking, prohibit short circuit



6. Download the link APP



SMART LIFE APP

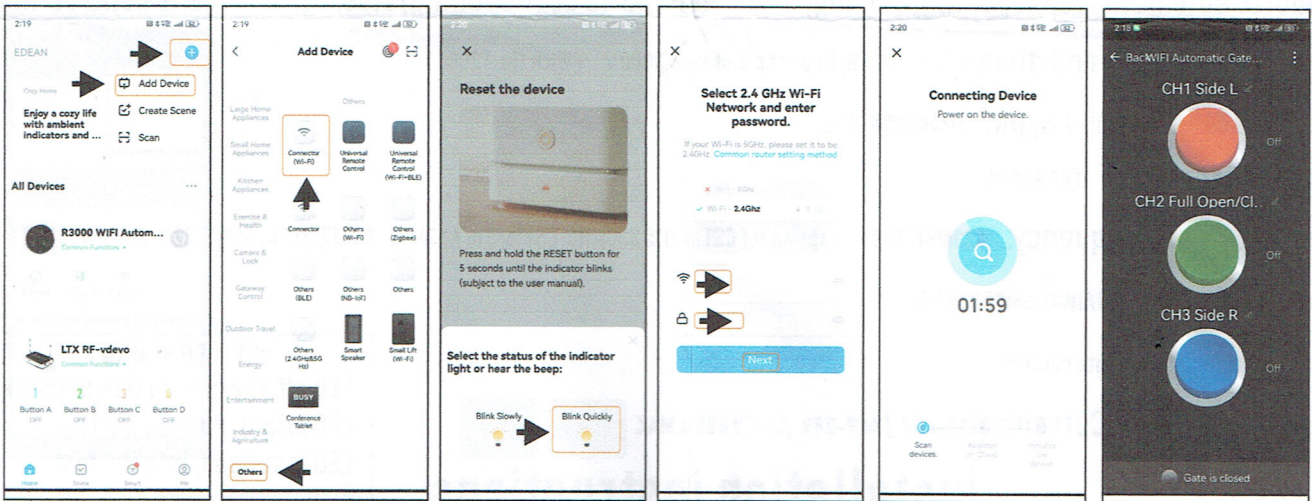
A. Scan QR codes to download apps, or Google Market Search for SMART LIFE, App note users

B. phones Connect to 2.4 gwi-fi and turn on Bluetooth

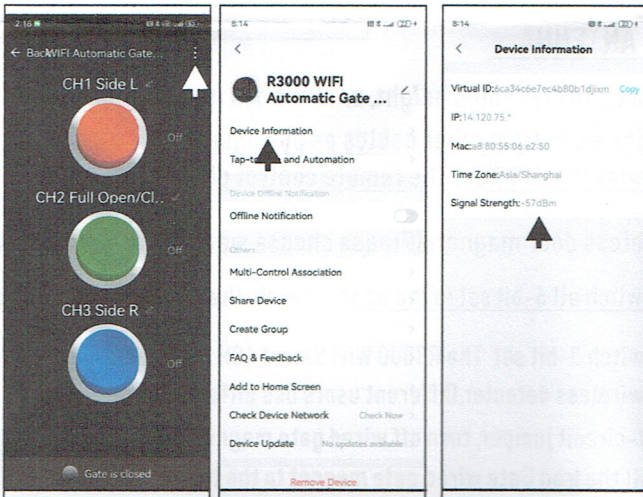
C. Press the WIFI button for 10 seconds, the LED flash quickly, if not, repeat for 10 seconds, into the fast distribution network

D. Click on the top right corner of the APP to add the device, click on the bottom corner of the other, select the WIFI connector, and then next, enter the WIFI user name and password

If the Bluetooth connection is complete, it will automatically pop out and click install

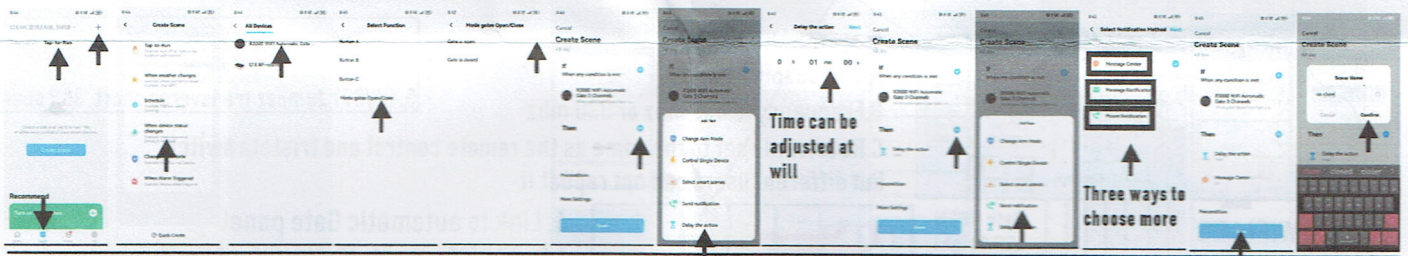


7. Check the signal strength



with a minimum of -85 dbm and a maximum of -30 dbm. When the signal is below -85 decibels, adjust the WIFI position or increase the AP

8. Set a certain time without closing the door to remind



9. Set the automatic door closing, timing door closing

