



SC series can combine all of our warning light and electric horn products into a single combination model depending on your specific needs

### SC1

The budget model of small-sized warning light and electric horn combinations

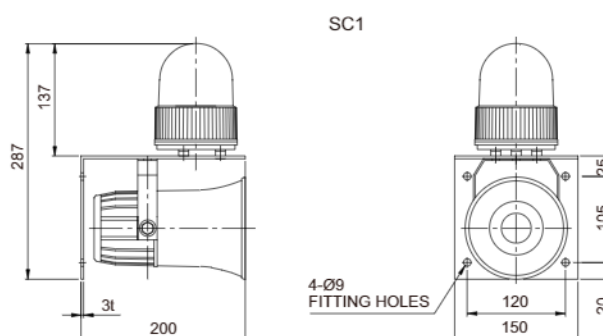
- Protection rating : IP44

#### Specification for Standard Model

- Standard combination includes S100R products combination with SRN (same as pictured to the left)

#### Technical Diagram

(Units : mm)



SC1

#### Customization

- Warning light : Select one from S100 series(Please refer to page 63-69) for the combination
- Electric horn : Select one from SN, SRN, SEN15/ 25(Please refer to page 383-384) for the combination

### SC2

Most commonly used standard-sized warning light and electric horn combination model

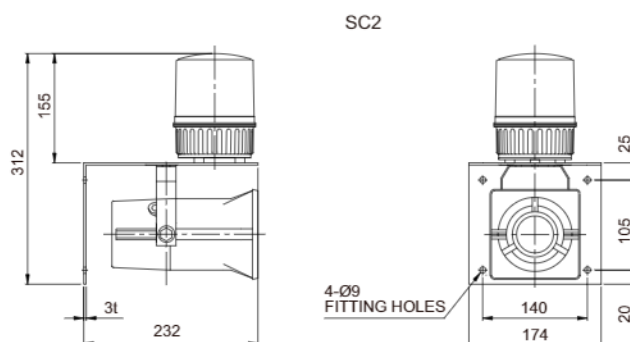
- Protection rating : IP44

#### Specification for Standard Model

- Standard combination includes S125U products combined with the SEN15 (Same as pictured to the left)

#### Technical Diagram

(Units : mm)



SC2

#### Customization

- Warning light : Select one from S125 series(Please refer to page 70-76) for the combination
- Electric horn : Select one from SN, SRN, SEN15/25(Please refer to page 383-384) for the combination



Warning/  
Signal/  
Stackable



Signal &  
Electric Horn/  
Speakers



Vessels and  
Heavy Duty  
Equipment



Explosion  
Proof



Warning  
Light Bar



Aviation  
Obstruction  
Lights



Signal Tower  
Lights



USB/ETN  
Signal Tower  
Lights



Electric Horn/  
Speakers



Industrial  
LED Lights



SC3

### SC3

Waterproof, dustproof type warning light and electric horn combinations

• Protection rating : IP56



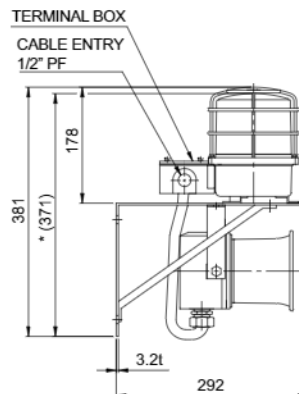
#### Common Specifications

• Combination of SH1-2T and signal horn SEWN30L(Same as pictured to the left)

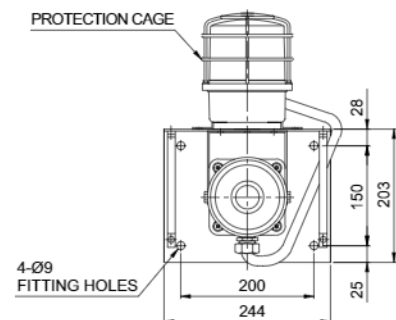


#### Technical Diagram

(Units : mm)



SC3



※ \*(371) represents SC3 size without protection cage.



#### Customization

- Warning light : Select between models SH1P-2T and SH2P-2T series (Please refer to page 153-159)
- Electric horn : Choose one model among SEWN30L/50L, SEHN25 and SEHN50 (Please refer to page 179-174)
- Stainless steel bracket



#### Standard Model Number

SC1	-	220	-	R
[Model number]		[Voltage]		[Color]
<ul style="list-style-type: none"> <li>• SC1 (S100R+SRN)</li> <li>• SC2 (S125U+SEN15)</li> <li>• SC3 (SH1P-2T+SEWN30L)</li> </ul>		<ul style="list-style-type: none"> <li>• 12-DC12V</li> <li>• 24-DC24V</li> <li>• 110-AC110V</li> <li>• 220-AC220V</li> </ul>		<ul style="list-style-type: none"> <li>• R-Red</li> <li>• A-Amber</li> <li>• G-Green</li> <li>• B-Blue</li> </ul>



#### Ordering Specification

SC3	- (	SH1P-2T	-	R	+	SEWN30L	-	WS	) -	220
[Model number]		[Light type]		[Color]		[Horn type]		[Sound]		[Voltage]
<ul style="list-style-type: none"> <li>• SC1</li> <li>• SC2</li> <li>• SC3</li> </ul>		<ul style="list-style-type: none"> <li>• Select 1 model among S100 series</li> <li>• Select 1 model among S125 series</li> <li>• Select 1 model among SH1P-2T and SH2P-2T series</li> </ul>		<ul style="list-style-type: none"> <li>• R-Red</li> <li>• A-Amber</li> <li>• G-Green</li> <li>• B-Blue</li> </ul>		<ul style="list-style-type: none"> <li>• Select 1 model among SN, SRN and SEN15/25</li> <li>• Select 1 model among SRN and SEN15/25</li> <li>• Select 1 model among SEWN30L/50L and SEHN25/50</li> </ul>		<ul style="list-style-type: none"> <li>• WS -Warning sounds</li> <li>• WP -Special warning sounds</li> <li>• WM -Melodies</li> <li>• WA -Alarms</li> <li>• WV -Customizable voices</li> </ul>		<ul style="list-style-type: none"> <li>• 12-DC12V</li> <li>• 24-DC24V</li> <li>• 110-AC110V</li> <li>• 220-AC220V</li> </ul>

※ Light sources can be selected among LED revolving, LED steady/flashing, xenon strobe and bulb revolving type.